

VENDORS

Lot	Vendor
12, 16, 23, 34, 39, 40, 41, 42 26, 35	Garreth T Behan - Clonagowan Ballyfin Portlaoise Co Laois Patrick Bones - Derough Kilkelly Co Mayo
19	Angela Brickley - Coolrain Portlaoise Co. Laois.
15	George Conboy - Gubbs Cloone Carrick-On-Shannon Co Leitrim
6, 9	John Connaughton - Barrettstown Dysart Mullingar Co Westmeath
11, 37, 43	Robert John Dunne - Corporation Lands Belturbet Co Cavan
7	James Grimes - Cournaughy Carrigallen Co Leitrim
8	Noel Jagoe - Toughmacdermody Drinagh Co Cork
22	Paul Mcardle - Aughadreenan Broomfield Castleblayney Co Monaghan
28, 32, 45, 47	Joseph Mcgarry - Caldera Newtownforbes Co Longford
4	James Mcgovern - Curraghboy Carrigallen Co Leitrim
36	Michael Mckiernan - Creggy The Pigeons Athlone Co Westmeath
2, 17	John & Theresa Murphy - Knockaun Annestown Co Waterford
5	Hugh Murray - Shiloh Parkwood Moate Co Westmeath
3, 30, 31, 33	Denis O'Halloran - Main St Tulla Co Clare
13, 14, 21	William & Marie O'Riordan - Bridgemount Kilbrien Rathcormac Co Cork
10	Thomas Ryan - Cummermoloughney Milestone Thurles Co Tipperary
27	Anthony Scanlon - Carnaree Ballymote Co Sligo
24	Michael Sheahan - Luddenmore Grange Kilmallock Co. Limerick
29	Michael & Patr Slattery - Knockatee Dunmore Co Galway
1, 25	Sandra Stone - Milton Cottage Bandon Co Cork
18	Liam Waldron - Scrigg Ballyhaunis Co Mayo
20, 38, 44, 46	David Wall - Curaheen Hazelhatch Road Newcastle Co Dublin

Lot 3 TULLA VICTORY

Breed: Simmental

IE131828020608

DOB: 09-Sep-2007

Male

Owner: Denis O'Halloran - Main St Tulla Co Clare

HILLCREST JEROME ET	SACOMBE WISHFULL THINKING	HOCKENHULL MARVEL
		SACOMBE MAME
	CAMUS SOLITARE	SIEGFRIED
		STAR FANNY
TULLA RONDA	STAR HUGO	MIST IMP.'74G
		LIESA IMP.'71A
	TULLA HAPPY	RACEVIEW E-DOC
		TULLA WELCOME

Within Breed Index Data rel Across Breed

★★★★★	Suckler Beef Value	€191	29%	★★★★★
-------	---------------------------	------	-----	-------

★★★★	Beef Value			
★★★★★	Calving Traits	-€5	29%	★★★★★
★★★★★	Weanling Export	€106	30%	★★★★★
★★★★★	Beef Carcass	€120	31%	★★★★

	Replacement Value			
★★	Milk & Fertility	€104	15%	★★★★★
★★★★★	Calf Quality	€354	31%	★★★★★

★★★	Other Key Traits			
	% Difficulty Calving	5.64%	42%	★★★
	Docility	%	%	

Data Rel: 40 - 60% = Ave 20 - 40% = Below Ave <20% = Poor

€uro-Star Traits

€uro-Star Rating (ICBF, Jan 2

Calving Traits			Weanling Export, Beef Carcass & Replacement Calf Trai					
Calv Diff (%)	Gest Len (days)	Mort (%)	Wean Wt Dir (kg)	Wean Calf Quality (%)	Carc Wt (kg)	Carcass Conf Score	Carcass Fat Score	Dry Matter Intake (kg)
5.64	2.39	0.12	31.17	22.32	24.16	1.65	-0.36	0.26

Replacement Milk & Fertility Traits					
Calv Int (days)	Survival (%)	Age 1st calv (days)	Wean Wt Mat (kg)	Calv Diff Mat (%)	Cull Cow (kg)
-2.84	0.19	-6.65	9.02	5.7	11.68

BLUP Linear Type			
MUSCLE	SKELETAL	DOCILITY	RELIABILITY
118	99		33

Comments
Has worked successfully

Lot 4 CURRAGHBOY VICTOR
IE231292590087 DOB: 14-Sep-2007

Breed: Simmental
Male

Owner: James Mcgovern - Curraghboy Carrigallen Co Leitrim

HILLCREST NAUGHTY	ROSTEN BARNEY	GRETNA HOUSE SUPERSONIC
		PARKGATE TEMPTRESS
	HILLCREST WINNIE	CAMUS PIONEER
CORLESMORE MIST	FREIGHDUFF BRENDAN	CAMUS SOLITAIRE
		HERKULES
	FREIGHDUFF TARA	
	SEABANK PEDRO	
	SWIFTSHEAT KITTY	SWIFTSHEAT GRETL

Within Breed	Index	Data rel	Across Breed
★	Suckler Beef Value €143	31%	★★★
★	Beef Value	-€16	31%
★★★	Calving Traits	€93	32%
★★★	Weanling Export	€104	32%
★★	Replacement Value	€70	21%
★★	Milk & Fertility	€264	32%
★	Calf Quality		
★	Other Key Traits	8%	34%
	% Difficulty Calving	%	%
	Docility		

Data Rel: 40 - 60% = Ave 20 - 40% = Below Ave <20% = Poor

€uro-Star Traits

€uro-Star Rating (ICBF, Jan 2

Calving Traits			Weanling Export, Beef Carcass & Replacement Calf Traits					
Calv Diff (%)	Gest Len (days)	Mort (%)	Wean Wt Dir (kg)	Wean Calf Quality (%)	Carc Wt (kg)	Carcass Conf Score	Carcass Fat Score	Dry Matter Intake (kg)
8	3.37	0.57	27.02	19.79	23.94	1.51	-0.21	0.44

Replacement Milk & Fertility Traits					
Calv Int (days)	Survival (%)	Age 1st calv (days)	Wean Wt Mat (kg)	Calv Diff Mat (%)	Cull Cow (kg)
-2.3	0.21	-8.7	7.16	6.88	12.98

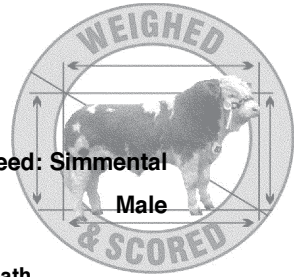
BLUP Linear Type

MUSCLE	SKELETAL	DOCILITY	RELIABILITY
117	110		33

Comments

Lot 5 SHILOH VOLCANO (ET)
IE301208230318 DOB: 15-Sep-2007

Breed: Simmental
Male



Owner: Hugh Murray - Shiloh Parkwood Moate Co Westmeath

THORNYHILL SUPREMO	ELAGHMORE NEPTUNE	BALLYBANE LARRY
		ELAGHMORE JULIETTE
	THORNYHILL PATRICIA	SCOTTISH NEFF
		THORNYHILL DOROTHY
MILTON FERGIE	AWL MANITOBA SPARTAN	AVF POLLED SPARTAN 6S
		SILVER WILLOW 46SS
	SEABANK WINSOME	SACOMBE EDGAR
		SEABANK REBECCA

Within Breed	Index	Data rel	Across Breed
★	Suckler Beef Value €146	30%	★★★★★

★★★★	Beef Value		
★★★	Calving Traits	-€5	20%
★★	Weanling Export	€86	42%
★	Beef Carcass	€79	40%

★★★★★	Replacement Value		
★★★★★	Milk & Fertility	€144	15%
★	Calf Quality	€239	40%

★★★★★	Other Key Traits		
★★★★★	% Difficulty Calving	4.86%	28%
	Docility	%	%

Data Rel: 40 - 60% = Ave 20 - 40% = Below Ave <20% = Poor

€uro-Star Traits Euro-Star Rating (ICBF, Jan 2

Calving Traits			Weanling Export, Beef Carcass & Replacement Calf Traits					
Calv Diff (%)	Gest Len (days)	Mort (%)	Wean Wt Dir (kg)	Wean Calf Quality (%)	Carc Wt (kg)	Carcass Conf Score	Carcass Fat Score	Dry Matter Intake (kg)
4.86	1.82	0.69	25.47	17.84	15.76	1.29	-0.09	0.41

Replacement Milk & Fertility Traits					
Calv Int (days)	Survival (%)	Age 1st calv (days)	Wean Wt Mat (kg)	Calv Diff Mat (%)	Cull Cow (kg)
-3.37	0.52	-8.36	12.49	6.56	10.34

BLUP Linear Type			
MUSCLE	SKELETAL	DOCILITY	RELIABILITY
99	90		43

Comments

Lot 6

BALLYBANE VISTA

Breed: Simmental

IE361153270589

DOB: 21-Sep-2007

Male

Owner: John Connaughton - Barretstown Dysart Mullingar Co Westmeath

CLEENAGH FLASHER	CARNKERN TITAN	TEVIOT PANTHER
		CARNKERN NATASHA
	CLEENAGH KAY	SCOTTISH NEFF
		ANATRIM. KAY
BALLYBANE MARBLE	INNERWICK CHIEFTAIN	STAR ROVER
		CAMUS VICTORIA
	BALLYBANE JUDY	DIRNANEAN NUGGET
		BALLYBANE COLETTE

Within Breed	Index	Data rel	Across Breed
★★★★★	Suckler Beef Value €200	24%	★★★★★

★★★★	Beef Value		
★★★★★	Calving Traits	-€6	24%
★★★★★	Weanling Export	€98	27%
★★★★★	Beef Carcass	€119	25%

★★★★★	Replacement Value		
★★★★★	Milk & Fertility	€159	11%
★★★★★	Calf Quality	€348	27%

★★	Other Key Traits		
	% Difficulty Calving	5.98%	38%
	Docility	%	%

Data Rel: 40 - 60% = Ave 20 - 40% = Below Ave <20% = Poor

€uro-Star Traits Euro-Star Rating (ICBF, Jan 2

Calving Traits			Weanling Export, Beef Carcass & Replacement Calf Traits					
Calv Diff (%)	Gest Len (days)	Mort (%)	Wean Wt Dir (kg)	Wean Calf Quality (%)	Carc Wt (kg)	Carcass Conf Score	Carcass Fat Score	Dry Matter Intake (kg)
5.98	2.15	0.23	31.02	19.38	27.33	1.43	-0.42	0.44

Replacement Milk & Fertility Traits					
Calv Int (days)	Survival (%)	Age 1st calv (days)	Wean Wt Mat (kg)	Calv Diff Mat (%)	Cull Cow (kg)
-3.55	1.32	-12.26	13.36	6.5	17.66

BLUP Linear Type			
MUSCLE	SKELETAL	DOCILITY	RELIABILITY
114	101		25

Comments

Lot 7 CARRIGALLEN VICTOR
IE231306660371 DOB: 03-Oct-2007

Breed: Simmental
Male

Owner: James Grimes - Cournaughy Carrigallen Co Leitrim

FREIGHDUFF BRENDAN	HERKULES	HINDU
		BLEAMI
	FREIGHDUFF TARA	DOVEA BERNAD
		FREIGHDUFF NORA
		BRINKTON BRILLIANT
CARRIGALLEN PAULA	INNERWICK FESTIVAL	STAR SUSANNA
		DOVEGROVE EVAN
	DRUMALT HILARY	DRUMALT DAISY

Within Breed Index Data rel Across Breed

★	Suckler Beef Value	€ 121	28%	★★★★
---	---------------------------	-------	-----	------

★	Beef Value			
★	Calving Traits	-€15	27%	★★
★★	Weanling Export	€91	29%	★★★★
★	Beef Carcass	€86	29%	★★

	Replacement Value			
★	Milk & Fertility	€65	24%	★★★★★
★	Calf Quality	€222	29%	★★

★★	Other Key Traits			
	% Difficulty Calving	6.71%	29%	★★
	Docility	%	%	

Data Rel: 40 - 60% = Ave 20 - 40% = Below Ave <20% = Poor

€uro-Star Traits

€uro-Star Rating (ICBF, Jan 2

Calving Traits			Weanling Export, Beef Carcass & Replacement Calf Traits					
Calv Diff (%)	Gest Len (days)	Mort (%)	Wean Wt Dir (kg)	Wean Calf Quality (%)	Carc Wt (kg)	Carcass Conf Score	Carcass Fat Score	Dry Matter Intake (kg)
6.71	3.08	1.16	26.83	19.05	16.29	1.3	-0.24	0.34

Replacement Milk & Fertility Traits					
Calv Int (days)	Survival (%)	Age 1st calv (days)	Wean Wt Mat (kg)	Calv Diff Mat (%)	Cull Cow (kg)
-0.15	-0.3	2.97	9.72	6.66	8.59

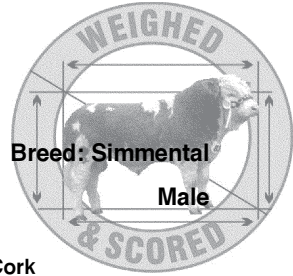
BLUP Linear Type

MUSCLE	SKELETAL	DOCILITY	RELIABILITY
110	98		29

Comments

Lot 8 DERMODY VODAFONE
IE141339150886 DOB: 08-Oct-2007

Breed: Simmental
Male



Owner: Noel Jagoe - Toughmacdermody Drinagh Co Cork

CARNKERN TITAN	TEVIOT PANTHER	SIEGER
		TEVIOT KANDY
	CARNKERN NATASHA	HERRSCHER
DERMODY LILY	MILTON GIOVANNI	CARNKERN LENA
		CAMUS VIBRANT
		MILTON DUFFY
	DERMODY WENDY	DOVEA SIR IVOR
		ABBEYOUANE PENNY

Within Breed Index Data rel Across Breed

★★★	Suckler Beef Value	€180	34%	★★★★★
-----	---------------------------	------	-----	-------

★	Beef Value			
★★★	Calving Traits	-€14	29%	★★
★★★★	Weanling Export	€101	43%	★★★★★
★★★	Beef Carcass	€106	40%	★★★

★★★★★	Replacement Value			
★★★★★	Milk & Fertility	€174	15%	★★★★★
★★★	Calf Quality	€300	42%	★★★

★	Other Key Traits			
	% Difficulty Calving	7.59%	41%	★★
	Docility	%	%	

Data Rel: 40 - 60% = Ave 20 - 40% = Below Ave <20% = Poor

€uro-Star Traits

€uro-Star Rating (ICBF, Jan 2011)

Calving Traits			Weanling Export, Beef Carcass & Replacement Calf Traits						
Calv Diff (%)	Gest Len (days)	Mort (%)	Wean Wt Dir (kg)	Wean Calf Quality (%)	Carc Wt (kg)	Carcass Conf Score	Carcass Fat Score	Dry Matter Intake (kg)	
7.59	2.32	0.8	35.48	17.97	23.99	1.21	-0.2	0.64	

Replacement Milk & Fertility Traits					
Calv Int (days)	Survival (%)	Age 1st calv (days)	Wean Wt Mat (kg)	Calv Diff Mat (%)	Cull Cow (kg)
-5.96	2.37	-9.52	10.97	5.65	18.38

BLUP Linear Type

MUSCLE	SKELETAL	DOCILITY	RELIABILITY
112	115		46

Comments

Lot 9 BALLYBANE VOCATE

Breed: Simmental

IE361153210600

DOB: 17-Oct-2007

Male

Owner: John Connaughton - Barretstown Dysart Mullingar Co Westmeath

WOODSTOCK II PARNELL	CLEENAGH FLASHER	CARNKERN TITAN
		CLEENAGH KAY
	WOODSTOCK II HAZEL	DIRNANEAN NUGGET
BALLYBANE RUTH EIGHTEEN	HILLCREST KING	BALLYBANE BREDA
		HILLCREST CHAMPION
		BALLYBANE RUTH
	SEABANK CINDY	GRETNA HOUSE SUPERSONIC
		SEABANK REBECCA

Within Breed Index Data rel Across Breed

★★★★★	Suckler Beef Value	€186	29%	★★★★★
-------	---------------------------	------	-----	-------

★★★	Beef Value			
★★★	Calving Traits	-€4	28%	★★★★★
★★	Weanling Export	€90	30%	★★★
★★★	Beef Carcass	€113	31%	★★★

★★★	Replacement Value			
★★★	Milk & Fertility	€121	10%	★★★★★
★★★★★	Calf Quality	€337	31%	★★★★★

★★★★★	Other Key Traits			
	% Difficulty Calving	5.17%	40%	★★★
	Docility	%	%	

Data Rel: 40 - 60% = Ave 20 - 40% = Below Ave <20% = Poor

€uro-Star Traits

€uro-Star Rating (ICBF, Jan 2

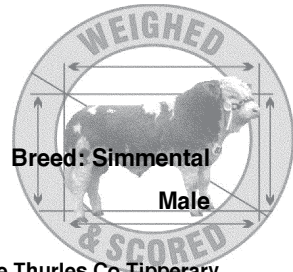
Calving Traits			Weanling Export, Beef Carcass & Replacement Calf Trai					
Calv Diff (%)	Gest Len (days)	Mort (%)	Wean Wt Dir (kg)	Wean Calf Quality (%)	Carc Wt (kg)	Carcass Conf Score	Carcass Fat Score	Dry Matter Intake (kg)
5.17	2.36	0	29.11	17.23	24.78	1.36	-0.43	0.34

Replacement Milk & Fertility Traits					
Calv Int (days)	Survival (%)	Age 1st calv (days)	Wean Wt Mat (kg)	Calv Diff Mat (%)	Cull Cow (kg)
-3.71	1.32	-11.64	10.88	7.68	19.09

BLUP Linear Type			
MUSCLE	SKELETAL	DOCILITY	RELIABILITY
119	110		27

Comments

Lot 10 CUMMER VICTOR 4
IE331214650390 DOB: 06-Nov-2007



Owner: Thomas Ryan - Cummermoughney Milestone Thurles Co Tipperary

HILLCREST BUTCHER	MAGHERACRIGAN SPECIAL	ORAGE
		BALLYBANE NITA
	CAMUS SOLITARE	SIEGFRIED
CASTLEGALE PRINCESS		STAR FANNY
	ROSTEN BARNEY	GRETNÁ HOUSE SUPERSONIC
		PARKGATE TEMPTRESS
	CASTLEGALE HONEY	CAMUS VIBRANT
		CASTLEGALE CARA

Within Breed	Index	Data rel	Across Breed
★★★★★	Suckler Beef Value €231	36%	★★★★★
★★★	Beef Value		
★★★★★	Calving Traits -€5	31%	★★★★★
★★★★★	Weanling Export €119	45%	★★★★★
★★★★★	Beef Carcass €149	41%	★★★★★
	Replacement Value		
★★	Milk & Fertility €102	19%	★★★★★
★★★★★	Calf Quality €441	43%	★★★★★
★★★★★	Other Key Traits		
	% Difficulty Calving 5.11%	41%	★★★
	Docility %	%	

Data Rel: 40 - 60% = Ave 20 - 40% = Below Ave <20% = Poor

€uro-Star Traits Euro-Star Rating (ICBF, Jan 2

Calving Traits			Weanling Export, Beef Carcass & Replacement Calf Traits					
Calv Diff (%)	Gest Len (days)	Mort (%)	Wean Wt Dir (kg)	Wean Calf Quality (%)	Carc Wt (kg)	Carcass Conf Score	Carcass Fat Score	Dry Matter Intake (kg)
5.11	3.07	-0.08	37.08	23.75	36.19	1.71	-0.45	0.59

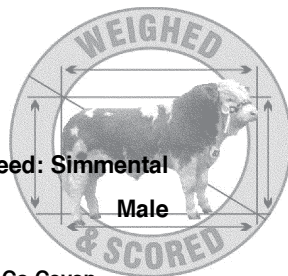
Replacement Milk & Fertility Traits					
Calv Int (days)	Survival (%)	Age 1st calv (days)	Wean Wt Mat (kg)	Calv Diff Mat (%)	Cull Cow (kg)
-7.61	1.89	9.24	7.59	6.15	24.77

BLUP Linear Type			
MUSCLE	SKELETAL	DOCILITY	RELIABILITY
118	124		43

Comments

Lot 11 KILDUFF VICTORY
 IE121098550392 DOB: 06-Nov-2007

Breed: Simmental
 Male



Owner: Robert John Dunne - Corporation Lands Belturbet Co Cavan

KILDUFF SIMBA	DIRNANEAN JACOB	ARKMILL FRANKLYN
		DIRNANEAN BOUNTY
	KILDUFF KANDY	ENFIELD BENZ
KILDUFF NADINE	KILDUFF KAIZER	KILDUFF GINA
		FREIGHDUFF BRENDAN
		KILDUFF EUTOPIA
	KILDUFF CINDY	CLEENAGH VICEROY
		CAMOLIN JINGLE

Within Breed	Index	Data rel	Across Breed
★★★★★	Suckler Beef Value €201	27%	★★★★★

★	Beef Value		
★★★★★	Calving Traits -€12	22%	★★
★★★★★	Weanling Export €113	38%	★★★★★
★★★★★	Beef Carcass €131	33%	★★★★★

★★	Replacement Value		
★★★★★	Milk & Fertility €99	8%	★★★★★
★★★★★	Calf Quality €389	35%	★★★★★

★	Other Key Traits		
	% Difficulty Calving 7.4%	36%	★★
	Docility %	%	

Data Rel: 40 - 60% = Ave 20 - 40% = Below Ave <20% = Poor

€uro-Star Traits €uro-Star Rating (ICBF, Jan 2

Calving Traits			Weanling Export, Beef Carcass & Replacement Calf Tra					
Calv Diff (%)	Gest Len (days)	Mort (%)	Wean Wt Dir (kg)	Wean Calf Quality (%)	Carc Wt (kg)	Carcass Conf Score	Carcass Fat Score	Dry Matter Intake (kg)
7.4	2.73	0.32	43.8	17.41	29.86	1.1	-0.21	0.69

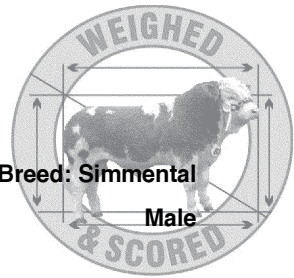
Replacement Milk & Fertility Traits					
Calv Int (days)	Survival (%)	Age 1st calv (days)	Wean Wt Mat (kg)	Calv Diff Mat (%)	Cull Cow (kg)
-2.73	0.32	-1.97	10.28	5.83	17.12

Comments
 Big powerful red and white bull with excellent bone. Simda was a prize winner here in 07 and was sold to breed replacements. Kandy's bull last year was placed 2nd and sold for 5100. Quiet and fruitful.

BLUP Linear Type			
MUSCLE	SKELETAL	DOCILITY	RELIABILITY
109	127		29

Lot 12 CLONAGH VOOM SAMMY
IE221283360599 DOB: 08-Nov-2007

Breed: Simmental
Male



Owner: Garreth T Behan - Clonagowan Ballyfin Portlaoise Co Laois

MARBELHILL LIAM	RICHARDSTOWN JUMBO	HAMLET
		IRLA IMP.75A
	LAKEVIEW EMERALD	FREIGHDUFF BRENDAN
CLONAGH SAMANTHA		LAKEVIEW VIOLET
		ARKMILL FRANKLYN
	DIRNANEAN JACOB	DIRNANEAN BOUNTY
	CLONAGH DOROTHY	HAMLET
		CLONASLEE WANDA

Within Breed Index Data rel Across Breed

★★★★★	Suckler Beef Value	€235	41%	★★★★★
-------	---------------------------	------	-----	-------

★★	Beef Value			
★★	Calving Traits	-€7	38%	★★★
★★★★★	Weanling Export	€119	48%	★★★★★
★★★★★	Beef Carcass	€142	44%	★★★★★

	Replacement Value			
★★★★★	Milk & Fertility	€148	22%	★★★★★
★★★★★	Calf Quality	€434	46%	★★★★★

★★★	Other Key Traits			
	% Difficulty Calving	5.68%	41%	★★★
	Docility	%	%	

Data Rel: 40 - 60% = Ave 20 - 40% = Below Ave <20% = Poor

€uro-Star Traits €uro-Star Rating (ICBF, Jan 2

Calving Traits			Weanling Export, Beef Carcass & Replacement Calf Trai					
Calv Diff (%)	Gest Len (days)	Mort (%)	Wean Wt Dir (kg)	Wean Calf Quality (%)	Carc Wt (kg)	Carcass Conf Score	Carcass Fat Score	Dry Matter Intake (kg)
5.68	2.41	0.4	43.73	20.04	31.65	1.62	-0.28	0.67

Replacement Milk & Fertility Traits					
Calv Int (days)	Survival (%)	Age 1st calv (days)	Wean Wt Mat (kg)	Calv Diff Mat (%)	Cull Cow (kg)
-1.92	1.12	-22.82	13.37	6.96	20.58

Comments
A touch of class. In our eyes the best ever bull produced at Clonagh. Top cow family in the herd. Sires progeny has excelled at Clonagh. Outwintered. ADG 2.5 kgs since July. Predicted weight at sale of 950kgs clonaghsimmentals.com

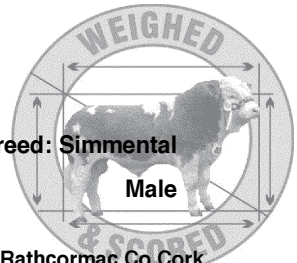
BLUP Linear Type			
MUSCLE	SKELETAL	DOCILITY	RELIABILITY
120	111		47

Lot 13 BRIDGEMOUNT VALENTINO

IE151616050326 DOB: 20-Nov-2007

Breed: Simmental

Male



Owner: Wiliam & Marie O'Riordan - Bridgemount Kilbrien Rathcormac Co Cork

MARBELHILL LIAM	RICHARDSTOWN JUMBO	HAMLET
		IRLA IMP.75A
	LAKEVIEW EMERALD	FREIGHDUFF BRENDAN
		LAKEVIEW VIOLET
BALLYARRA LOLA	SACOMBE WISHFULL THINKING	HOCKENHULL MARVEL
		SACOMBE MAME
	BALLYARRA FREDA	MOUNT ROYAL WESTERN
		CASTLELOMA NANCY

Within Breed Index Data rel Across Breed

★★★	Suckler Beef Value	€180	38%	★★★★★
-----	--------------------	------	-----	-------

★	Beef Value			
	Calving Traits	-€12	33%	★★
★★★★★	Weanling Export	€99	46%	★★★★★
★★★	Beef Carcass	€113	43%	★★★

	Replacement Value			
★★★★★	Milk & Fertility	€135	22%	★★★★★
★★★	Calf Quality	€319	44%	★★★

	Other Key Traits			
★	% Difficulty Calving	7.67%	42%	★★
	Docility	%	%	

Data Rel: 40 - 60% = Ave 20 - 40% = Below Ave <20% = Poor

€uro-Star Traits

€uro-Star Rating (ICBF, Jan 2

Calving Traits			Weanling Export, Beef Carcass & Replacement Calf Tra					
Calv Diff (%)	Gest Len (days)	Mort (%)	Wean Wt Dir (kg)	Wean Calf Quality (%)	Carc Wt (kg)	Carcass Conf Score	Carcass Fat Score	Dry Matter Intake (kg)
7.67	2.27	0.47	33.66	18.24	24.45	1.56	-0.19	0.51

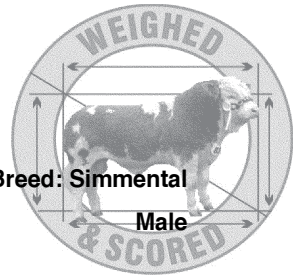
Replacement Milk & Fertility Traits					
Calv Int (days)	Survival (%)	Age 1st calv (days)	Wean Wt Mat (kg)	Calv Diff Mat (%)	Cull Cow (kg)
-1.11	0.47	-13.3	12.64	5.93	13.42

BLUP Linear Type			
MUSCLE	SKELETAL	DOCILITY	RELIABILITY
123	105		47

Comments

Lot 14 BRIDGEMOUNT VANDAL
IE151616070328 DOB: 29-Nov-2007

Breed: Simmental
Male



Owner: Wiliam & Marie O'Riordan - Bridgemount Kilbrien Rathcormac Co Cork

MARBELHILL LIAM	RICHARDSTOWN JUMBO	HAMLET
		IRLA IMP.75A
	LAKEVIEW EMERALD	FREIGHDUFF BRENDAN
		LAKEVIEW VIOLET
CASTLELYONS RUTH	HILLCREST CHAMPION	GRETNA HOUSE SUPERSONIC
		CAMUS SOLITAIRE
	CASTLELYONS NATASHA	BRINKTON BRILLIANT
		CASTLELYONS KIMBERLEY

Within Breed Index Data rel Across Breed

★★★★★	Suckler Beef Value	€201	38%	★★★★★
-------	---------------------------	------	-----	-------

★★★	Beef Value			
★★★	Calving Traits	-€6	33%	★★★★★
★★★	Weanling Export	€97	45%	★★★
★★★★★	Beef Carcass	€131	43%	★★★★★

	Replacement Value			
★★	Milk & Fertility	€96	21%	★★★★★
★★★★★	Calf Quality	€382	44%	★★★★★

★★★	Other Key Traits			
	% Difficulty Calving	5.88%	42%	★★★
	Docility	%	%	

Data Rel: 40 - 60% = Ave 20 - 40% = Below Ave <20% = Poor

€uro-Star Traits Euro-Star Rating (ICBF, Jan 2

Calving Traits			Weanling Export, Beef Carcass & Replacement Calf Trai					
Calv Diff (%)	Gest Len (days)	Mort (%)	Wean Wt Dir (kg)	Wean Calf Quality (%)	Carc Wt (kg)	Carcass Conf Score	Carcass Fat Score	Dry Matter Intake (kg)
5.88	2.02	0.19	31.99	18.3	30.61	1.69	-0.33	0.45

Replacement Milk & Fertility Traits					
Calv Int (days)	Survival (%)	Age 1st calv (days)	Wean Wt Mat (kg)	Calv Diff Mat (%)	Cull Cow (kg)
-0.74	0.21	-11.41	11.44	6.67	18.58

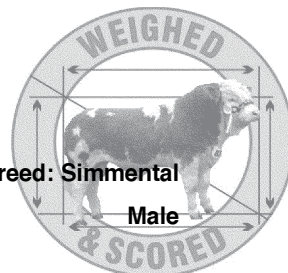
BLUP Linear Type

MUSCLE	SKELETAL	DOCILITY	RELIABILITY
126	103		46

Comments

Lot 15 CLOONE VIVIAN
IE231321280137 DOB: 04-Dec-2007

Breed: Simmental
Male



Owner: George Conboy - Gubbs Cloone Carrick-On-Shannon Co Leitrim

KILBRIDE FARM NEWRY	DOVEFIELDS GALLANT	CAMUS BRANDY
		HEVINGHAM PIAF
	KILBRIDE FARM EUNICE D29	MONCUR SENSATION
		KILBRIDE FARM EUNICE A25
CLOONE SUELLEN	BALLYDUFF JEWELLER	SACOMBE WISHFULL THINKING
		BALLYDUFF WENDY
	BALLINGAR JULIETTE	BALLINGAR FRANCO
		BALLINGAR BETTY

Within Breed Index Data rel Across Breed

★★★★★	Suckler Beef Value	€190	28%	★★★★★
-------	---------------------------	------	-----	-------

★★★★	Beef Value			
★★★★	Calving Traits	-€5	28%	★★★★★
★★	Weanling Export	€91	29%	★★★
★★★★	Beef Carcass	€113	30%	★★★

	Replacement Value			
★★★★★	Milk & Fertility	€142	10%	★★★★★
★★★★★	Calf Quality	€337	30%	★★★★★

	Other Key Traits			
★★★	% Difficulty Calving	5.66%	33%	★★★
	Docility	%	%	

Data Rel: 40 - 60% = Ave 20 - 40% = Below Ave <20% = Poor

€uro-Star Traits

€uro-Star Rating (ICBF, Jan 2

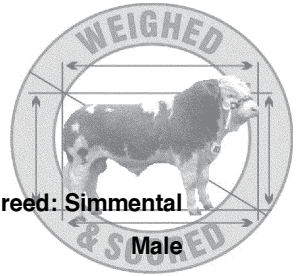
Calving Traits			Weanling Export, Beef Carcass & Replacement Calf Tra					
Calv Diff (%)	Gest Len (days)	Mort (%)	Wean Wt Dir (kg)	Wean Calf Quality (%)	Carc Wt (kg)	Carcass Conf Score	Carcass Fat Score	Dry Matter Intake (kg)
5.66	1.96	0.25	31.62	16.29	26.15	1.15	-0.18	0.43

Replacement Milk & Fertility Traits					
Calv Int (days)	Survival (%)	Age 1st calv (days)	Wean Wt Mat (kg)	Calv Diff Mat (%)	Cull Cow (kg)
-2.33	0.31	-13.94	12.47	6.17	11.39

BLUP Linear Type

MUSCLE	SKELETAL	DOCILITY	RELIABILITY
113	122		40

Comments



Lot 16 CLONAGH VODDY NEWRY
IE221283380626 DOB: 23-Dec-2007

Breed: **Simmental**
Male

Owner: Garreth T Behan - Clonagowan Ballyfin Portlaoise Co Laois

KILBRIDE FARM NEWRY	DOVEFIELDS GALLANT	CAMUS BRANDY
		HEVINGHAM PIAF
	KILBRIDE FARM EUNICE D29	MONCUR SENSATION
CLONAGH PEACEFULL-ENDORA	MILTON LORD-TIFFANY ET	KILBRIDE FARM EUNICE A25
		CARNKERN TITAN
		SEABANK TIFFANY
	CLONAGH ENDORA	HILLCREST BUTCHER
		SEABANK ROSEBUD

Within Breed	Index	Data rel	Across Breed
★★★★★	Suckler Beef Value €188	38%	★★★★★

★★★	Beef Value		
★★★	Calving Traits	-€6	36%
★★	Weanling Export	€85	44%
★★★	Beef Carcass	€113	41%

★★★★★	Replacement Value		
★★★★★	Milk & Fertility	€141	11%
★★★★★	Calf Quality	€336	44%

★★★★★	Other Key Traits		
★★★★★	% Difficulty Calving	5.1%	41%
	Docility	%	%

Data Rel: 40 - 60% = Ave 20 - 40% = Below Ave <20% = Poor

€uro-Star Traits **€uro-Star Rating (ICBF, Jan 2**

Calving Traits			Weanling Export, Beef Carcass & Replacement Calf Tra						
Calv Diff (%)	Gest Len (days)	Mort (%)	Wean Wt Dir (kg)	Wean Calf Quality (%)	Carc Wt (kg)	Carcass Conf Score	Carcass Fat Score	Dry Matter Intake (kg)	
5.1	2.05	0.59	31.3	14.17	29.06	0.99	-0.23	0.56	

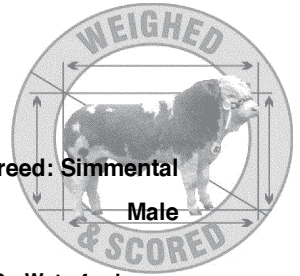
Replacement Milk & Fertility Traits					
Calv Int (days)	Survival (%)	Age 1st calv (days)	Wean Wt Mat (kg)	Calv Diff Mat (%)	Cull Cow (kg)
-4.72	1.59	-8.88	11.17	6.59	20.03

BLUP Linear Type			
MUSCLE	SKELETAL	DOCILITY	RELIABILITY
100	125		46

Comments
Powerfull outwintered pale bull. Dam was part of winning show team in 05. Johnes / BVD free. Photo on www.clonaghsimmentals.com

Lot 17 KNOCKANE VINTAGE
IE351079291274 DOB: 25-Dec-2007

Breed: Simmental
Male



Owner: John & Theresa Murphy - Knockaun Annestown Co Waterford

MARBELHILL LIAM	RICHARDSTOWN JUMBO	HAMLET
		IRLA IMP.75A
	LAKEVIEW EMERALD	FREIGHDUFF BRENDAN
		LAKEVIEW VIOLET
SILKEN LILLY	BRINKTON BRILLIANT	BRINKTON SOVREIGN
		BRINKTON SANDRA
	SILKEN JILLIAN	BLACKFORD TRIDENT
		KNOCKMEAL BARBIE

Within Breed Index Data rel Across Breed

★★★★★	Suckler Beef Value	€239	39%	★★★★★
-------	---------------------------	------	-----	-------

★★	Beef Value			
★★	Calving Traits	-€8	34%	★★★
★★★★★	Weanling Export	€128	47%	★★★★★
★★★★★	Beef Carcass	€147	44%	★★★★★

	Replacement Value			
★★★★★	Milk & Fertility	€137	22%	★★★★★
★★★★★	Calf Quality	€451	45%	★★★★★

★★	Other Key Traits			
★★	% Difficulty Calving	6.31%	43%	★★
	Docility	%	%	

Data Rel: 40 - 60% = Ave 20 - 40% = Below Ave <20% = Poor

€uro-Star Traits

€uro-Star Rating (ICBF, Jan

Calving Traits			Weanling Export, Beef Carcass & Replacement Calf Tra					
Calv Diff (%)	Gest Len (days)	Mort (%)	Wean Wt Dir (kg)	Wean Calf Quality (%)	Carc Wt (kg)	Carcass Conf Score	Carcass Fat Score	Dry Matter Intake (kg)
6.31	2.04	0.46	47.24	21.06	29.39	1.67	-0.41	0.57

Replacement Milk & Fertility Traits					
Calv Int (days)	Survival (%)	Age 1st calv (days)	Wean Wt Mat (kg)	Calv Diff Mat (%)	Cull Cow (kg)
-1.18	0.89	-18.2	12.8	6.2	19.21

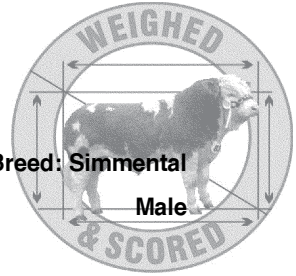
BLUP Linear Type

MUSCLE	SKELETAL	DOCILITY	RELIABILITY
128	114		48

Comments

Lot 18 RIVERBANK WILSON
IE271801630097 DOB: 07-Jan-2008

Breed: Simmental
Male



Owner: Liam Waldron - Scrigg Ballyhaunis Co Mayo

EXODUS	EISENHERZ	ECKHOLM
		768
	ROBE 93	EMU (PP)
FEARNA STAR EILE	RACEVIEW KING	ROMY
		RACEVIEW GLADIATOR
		KILMICHAEL DIAMOND
	FEARNA NORTHERNSTAR	HILLCREST JEROME ET
		RIVERBANK JENNY

Within Breed Index Data rel Across Breed

★★★★★	Suckler Beef Value	€195	24%	★★★★★★
-------	---------------------------	------	-----	--------

★	Beef Value			
★★★★★	Calving Traits	-€12	18%	★★
★★★★★	Weanling Export	€106	33%	★★★★★
★★★★★	Beef Carcass	€128	29%	★★★★★

	Replacement Value			
★★★	Milk & Fertility	€113	7%	★★★★★
★★★★★	Calf Quality	€360	31%	★★★★★

	Other Key Traits			
★	% Difficulty Calving	7.96%	32%	★
	Docility	%	%	

Data Rel: 40 - 60% = Ave 20 - 40% = Below Ave <20% = Poor

€uro-Star Traits Euro-Star Rating (ICBF, Jan 2

Calving Traits			Weanling Export, Beef Carcass & Replacement Calf Traits					
Calv Diff (%)	Gest Len (days)	Mort (%)	Wean Wt Dir (kg)	Wean Calf Quality (%)	Carc Wt (kg)	Carcass Conf Score	Carcass Fat Score	Dry Matter Intake (kg)
7.96	2.58	0.18	35.69	19.7	26.64	1.42	-0.38	0.34

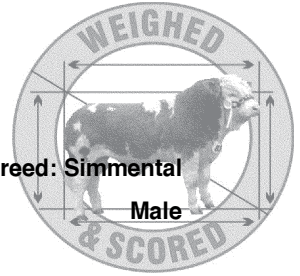
Replacement Milk & Fertility Traits					
Calv Int (days)	Survival (%)	Age 1st calv (days)	Wean Wt Mat (kg)	Calv Diff Mat (%)	Cull Cow (kg)
-2.05	0.39	0.38	11.14	5.02	15.05

BLUP Linear Type			
MUSCLE	SKELETAL	DOCILITY	RELIABILITY
117	110		34

Comments
Wilson is the first bull by Exodus in Southern Ireland - a full polled bull.

Lot 19 **CELTIC WISEMAN**
 IE221152670397 **DOB: 08-Jan-2008**

Breed: Simmental
Male



Owner: Angela Brickley - Coolrain Portlaoise Co. Laois.

CURAHEEN TYSON (ET)	HILLCREST CHAMPION	GRETNA HOUSE SUPERSONIC
		CAMUS SOLITARE
	RACEVIEW MERLE-BEAUTY	RACEVIEW KING
		KILMICHAEL BEAUTY
CELTIC RUBY	CARNKERN TITAN	TEVIOT PANTHER
		CARNKERN NATASHA
	CELTIC LIMELIGHT	CELTIC HIGHFLYER
		ANATRIM DIMPLE

Within Breed Index Data rel Across Breed

★★★★★	Suckler Beef Value	€259	29%	★★★★★
-------	---------------------------	-------------	------------	-------

★	Beef Value	-€11	20%	★★
★★★★★	Calving Traits	€136	43%	★★★★★
★★★★★	Weanling Export	€168	37%	★★★★★
★★★★★	Beef Carcass			★★★★★

★★★★★	Replacement Value			★★★★★
★★★★★	Milk & Fertility	€126	10%	★★★★★
★★★★★	Calf Quality	€495	39%	★★★★★

★	Other Key Traits			★★
	% Difficulty Calving	7.27%	33%	
	Docility	%	%	

Data Rel: 40 - 60% = Ave 20 - 40% = Below Ave <20% = Poor

€uro-Star Traits

€uro-Star Rating (ICBF, Jan 2

Calving Traits			Weanling Export, Beef Carcass & Replacement Calf Tra					
Calv Diff (%)	Gest Len (days)	Mort (%)	Wean Wt Dir (kg)	Wean Calf Quality (%)	Carc Wt (kg)	Carcass Conf Score	Carcass Fat Score	Dry Matter Intake (kg)
7.27	2.34	0.44	49.7	22.85	34.66	1.58	-0.72	0.51

Replacement Milk & Fertility Traits					
Calv Int (days)	Survival (%)	Age 1st calv (days)	Wean Wt Mat (kg)	Calv Diff Mat (%)	Cull Cow (kg)
-3.25	1.42	-18.88	49.7	5.44	26.44

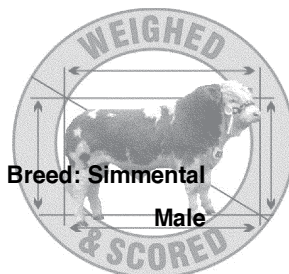
BLUP Linear Type

MUSCLE	SKELETAL	DOCILITY	RELIABILITY
139	118		41

Comments

First calf to sell from Curahaen Tyson - Irelands No 1 AI Suckler bull with an ICBF value of 285 euro. Tully Tested. Elite Bull - Top 1% on BLUP, Suckler Beef Value and Beef Carcass

Lot 20 CURAHEEN WHISKEY (ET)
IE171059830190 DOB: 09-Jan-2008



Breed: Simmental
Male

Owner: David Wall - Curaheen Hazelhatch Road Newcastle Co Dublin

HOCKENHULL MAVERICK	HOCKENHULL KOJAC	HOCKENHULL GAINSBOROUGH
		HOCKENHULL GIRLIE 2ND
	HOCKENHULL LOUISE 8TH	GRETNA HOUSE SUPERSONIC
		HOCKENHULL LOUISE
RACEVIEW MISTY-JADE	RACEVIEW KING	RACEVIEW GLADIATOR
		KILMICHAEL DIAMOND
	RACEVIEW JADE	CAMUS BRANDY
		RACEVIEW BARONESS

Within Breed Index Data rel Across Breed

★★★★★	Suckler Beef Value	€ 204	24%	★★★★★
-------	--------------------	-------	-----	-------

★★★★	Beef Value			
★★★★★	Calving Traits	-€6	14%	★★★★
★★★★★	Weanling Export	€121	40%	★★★★★
★★★★★	Beef Carcass	€132	34%	★★★★★

★	Replacement Value			
★★★★★	Milk & Fertility	€60	7%	★★★★★
★★★★★	Calf Quality	€412	35%	★★★★★

★★★★★	Other Key Traits			
	% Difficulty Calving	4.95%	20%	★★★★
	Docility	%	%	

Data Rel: 40 - 60% = Ave 20 - 40% = Below Ave <20% = Poor

Euro-Star Traits

Euro-Star Rating (ICBF, Jan)

Calving Traits			Weanling Export, Beef Carcass & Replacement Calf Traits					
Calv Diff (%)	Gest Len (days)	Mort (%)	Wean Wt Dir (kg)	Wean Calf Quality (%)	Carc Wt (kg)	Carcass Conf Score	Carcass Fat Score	Dry Matter Intake (kg)
4.95	2.75	0.39	43.37	20.84	25.6	1.3	-0.4	0.44

Replacement Milk & Fertility Traits					
Calv Int (days)	Survival (%)	Age 1st calv (days)	Wean Wt Mat (kg)	Calv Diff Mat (%)	Cull Cow (kg)
-3.02	0.9	-1.34	5.85	6.38	17.46

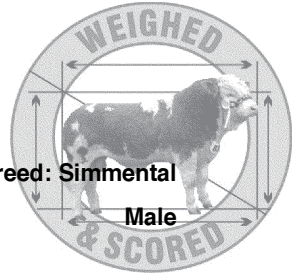
BLUP Linear Type

MUSCLE	SKELETAL	DOCILITY	RELIABILITY
121	113		40

Comments
400 Day weight of 848Kgs

Lot 21 BRIDGEMOUNT WALTER
IE151616010330 DOB: 12-Jan-2008

Breed: Simmental
Male



Owner: Wiliam & Marie O'Riordan - Bridgemount Kilbrien Rathcormac Co Cork

MARBELHILL LIAM	RICHARDSTOWN JUMBO	HAMLET
		IRLA IMP.75A
	LAKEVIEW EMERALD	FREIGHDUFF BRENDAN
CASTLELYONS KIMBERLEY	SACOMBE WISHFULL THINKING	LAKEVIEW VIOLET
		HOCKENHULL MARVEL
		SACOMBE MAME
	BALLYARRA ELMA	DIRNANEAN NUGGET
		SLANEYVIEW WANDA

Within Breed Index Data rel Across Breed

★★★★★	Suckler Beef Value	€184	36%	★★★★★
-------	---------------------------	------	-----	-------

★★	Beef Value			
★★★	Calving Traits	-€9	33%	★★★
★★★★	Weaning Export	€92	41%	★★★★
★★★★★	Beef Carcass	€117	40%	★★★★★

	Replacement Value			
★★★★	Milk & Fertility	€123	21%	★★★★★
★★★★	Calf Quality	€333	40%	★★★★★

★★	Other Key Traits			
	% Difficulty Calving	6.73%	42%	★★
	Docility	%	%	

Data Rel: 40 - 60% = Ave 20 - 40% = Below Ave <20% = Poor

Euro-Star Traits

Euro-Star Rating (ICBF, Jan

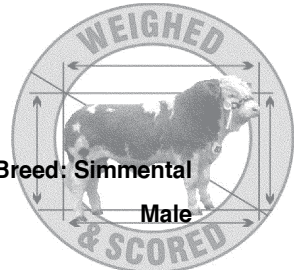
Calving Traits			Weanling Export, Beef Carcass & Replacement Calf Tr.					
Calv Diff (%)	Gest Len (days)	Mort (%)	Wean Wt Dir (kg)	Wean Calf Quality (%)	Carc Wt (kg)	Carcass Conf Score	Carcass Fat Score	Dry Matter Intake (kg)
6.73	2.2	0.45	31.84	16.61	26.38	1.58	-0.18	0.47

Replacement Milk & Fertility Traits					
Calv Int (days)	Survival (%)	Age 1st calv (days)	Wean Wt Mat (kg)	Calv Diff Mat (%)	Cull Cow (kg)
-0.39	0.04	-20.57	11.94	6.4	12.09

BLUP Linear Type

MUSCLE	SKELETAL	DOCILITY	RELIABILITY
126	115		46

Comments



Lot 22 BROOMFIELD WRANCIES LAD
IE291169820034 DOB: 17-Jan-2008

Breed: Simmental
Male

Owner: Paul Mcardle - Aughadreenan Broomfield Castleblayney Co Monaghan

DIRNANEAN JACOB	ARKMILL FRANKLYN	RAVENSWORTH CAREFREE
		CONGEITH ANNABEL
	DIRNANEAN BOUNTY	THORNHILL VIKING
BROOKWOOD REGINA	RACEVIEW KING	MONCUR TARKA
		RACEVIEW GLADIATOR
		KILMICHAEL DIAMOND
	BROOKWOOD GINA	AWL MANITOBA SPARTAN
		BROOKWOOD DELIGHT

Within Breed		Index	Data rel	Across Breed
★★★★★	Suckler Beef Value	€220	27%	★★★★★
★★	Beef Value			
★★★	Calving Traits	-€7	26%	★★★
★★★★★	Weanling Export	€102	28%	★★★★★
★★★★★	Beef Carcass	€135	29%	★★★★★
Replacement Value				
★★★★★	Milk & Fertility	€155	11%	★★★★★
★★★★★	Calf Quality	€394	29%	★★★★★
Other Key Traits				
★★★★★	% Difficulty Calving	5.18%	37%	★★★
	Docility	%	%	

Data Rel: 40 - 60% = Ave 20 - 40% = Below Ave <20% = Poor

€uro-Star Traits

€uro-Star Rating (ICBF, Jan)

Calving Traits			Weanling Export, Beef Carcass & Replacement Calf Traits					
Calv Diff (%)	Gest Len (days)	Mort (%)	Wean Wt Dir (kg)	Wean Calf Quality (%)	Carc Wt (kg)	Carcass Conf Score	Carcass Fat Score	Dry Matter Intake (kg)
5.18	3.18	0.29	35.27	18.43	30.6	1.52	-0.39	0.44

Replacement Milk & Fertility Traits					
Calv Int (days)	Survival (%)	Age 1st calv (days)	Wean Wt Mat (kg)	Calv Diff Mat (%)	Cull Cow (kg)
-5.52	1.57	0.22	12.68	6.01	19.64

BLUP Linear Type

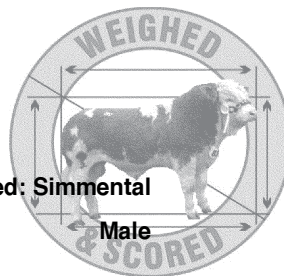
MUSCLE	SKELETAL	DOCILITY	RELIABILITY
113	110		40

Comments

Res North East Club Jan Bull champion. Dam Regina was reserve National Senior Heifer Champion in 06. Her first calf was North East Club Jan Bull champion and 3rd in national final. Very good figures.

Lot 23 CLONAGH WILLIES BOY
IE221283390635 DOB: 18-Jan-2008

Breed: Simmental
Male



Owner: Garreth T Behan - Clonagowan Ballyfin Portlaoise Co Laois

MARBELHILL LIAM	RICHARDSTOWN JUMBO	HAMLET
		IRLA IMP 75A
	LAKEVIEW EMERALD	FREIGHDUFF BRENDAN
CLONAGH KAY	BRINKTON BRILLIANT	LAKEVIEW VIOLET
		BRINKTON SOVREIGN
	CLONAGH EDEL	BRINKTON SANDRA
		HILLCREST BUTCHER
		CLONASLEE WANDA

Within Breed Index Data rel Across Breed

★★★★★	Suckler Beef Value	€225	41%	★★★★★
-------	--------------------	------	-----	-------

★★★	Beef Value			
★★★★★	Calving Traits	-€4	39%	★★★★★
★★★★★	Weanling Export	€110	46%	★★★★★
★★★★★	Beef Carcass	€135	45%	★★★★★

	Replacement Value			
★★★★★	Milk & Fertility	€141	22%	★★★★★
★★★★★	Calf Quality	€413	46%	★★★★★

★★★★★	Other Key Traits			
	% Difficulty Calving	4.8%	43%	★★★
	Docility	%	%	

Data Rel: 40 - 60% = Ave 20 - 40% = Below Ave <20% = Poor

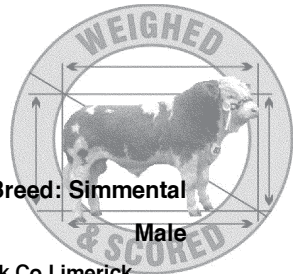
€uro-Star Traits €uro-Star Rating (ICBF, Jan 2

Calving Traits			Weanling Export, Beef Carcass & Replacement Calf Tra					
Calv Diff (%)	Gest Len (days)	Mort (%)	Wean Wt Dir (kg)	Wean Calf Quality (%)	Carc Wt (kg)	Carcass Conf Score	Carcass Fat Score	Dry Matter Intake (kg)
4.8	2.21	0.36	38.3	19.71	32.18	1.47	-0.29	0.63

Replacement Milk & Fertility Traits					
Calv Int (days)	Survival (%)	Age 1st calv (days)	Wean Wt Mat (kg)	Calv Diff Mat (%)	Cull Cow (kg)
-2.07	1.49	-22.41	11.83	7.08	19.15

BLUP Linear Type			
MUSCLE	SKELETAL	DOCILITY	RELIABILITY
118	116		48

Comments
Full brother to Pluto Boy, champion Tullamore sale 05, also Raven Kay Res Nat Intermediate heifer 06. Kays dam Edel bred champion here in 04 and res in 06. Johns / BVD free. Outwintered. Photo on www.clonaghsimmentals.com



Lot 24 LUDDENMORE WOLF KING

Breed: Simmental

IE241276270221 DOB: 20-Jan-2008

Male

Breeder: Martin Sheahan - Luddenmore Grange Kilmallock Co Limerick

Owner: Michael Sheahan - Luddenmore Grange Kilmallock Co. Limerick

RACEVIEW KING	RACEVIEW GLADIATOR	BRINKTON BRILLIANT
		RACEVIEW BEAUTY
	KILMICHAEL DIAMOND	AWL MANITOBA SPARTAN
		KILMICHAEL SULTANA
LUDDENMORE SYMPHONY	HILLCREST CHAMPION	GRETNA HOUSE SUPERSONIC
		CAMUS SOLITARE
	DRISHOGUE FREDA	SEABANK AUSTIN

Within Breed Index Data rel Across Breed

★★★★★	Suckler Beef Value	€245	38%	★★★★★
-------	---------------------------	------	-----	-------

★	Beef Value	-€22	37%	★
★★★★★	Calving Traits	€124	44%	★★★★★
★★★★★	Weanling Export	€175	41%	★★★★★
★★★★★	Beef Carcass			★★★★★

★★★	Replacement Value			★★★
★★★★★	Milk & Fertility	€125	16%	★★★★★
★★★★★	Calf Quality	€458	43%	★★★★★

★	Other Key Traits			★
	% Difficulty Calving	12.2%	40%	
	Docility	%	%	

Data Rel: 40 - 60% = Ave 20 - 40% = Below Ave <20% = Poor

€uro-Star Traits €uro-Star Rating (ICBF, Jan 2018)

Calving Traits			Weanling Export, Beef Carcass & Replacement Calf Traits					
Calv Diff (%)	Gest Len (days)	Mort (%)	Wean Wt Dir (kg)	Wean Calf Quality (%)	Carc Wt (kg)	Carcass Conf Score	Carcass Fat Score	Dry Matter Intake (kg)
12.2	2.33	0.17	43.29	22.17	37.99	1.73	-0.88	0.33

Replacement Milk & Fertility Traits					
Calv Int (days)	Survival (%)	Age 1st calv (days)	Wean Wt Mat (kg)	Calv Diff Mat (%)	Cull Cow (kg)
-4.83	1.19	8.54	11.07	3.57	28.07

Comments
Elite Bull - Top 1% on BLUP

BLUP Linear Type			
MUSCLE	SKELETAL	DOCILITY	RELIABILITY
131	117		44

Lot 25 MILTON WARRIOR (ET)
IE141522470268 DOB: 21-Jan-2008

Breed: Simmental
Male

Owner: Sandra Stone - Milton Cottage Bandon Co Cork

SALISBURY CHALLENGER	AGARDSLEY ANSELL	STERLING RAPIER
		AGARDSLEY SOPHIA BERNADE
	YANLEY GLENDA 6TH	WELLHOUSE KESTREL
MILTON HILARY		YANLEY GLENDA
	BRINKTON BRILLIANT	BRINKTON SOVREIGN
		BRINKTON SANDRA
	RACEVIEW CHRISTINA	MAGHERACRIGAN SPECIAL
		DOVEA LYNNE

Within Breed		Index	Data rel	Across Breed
★★★★★	Suckler Beef Value	€195	27%	★★★★★
★★★★★	Beef Value			
★★★★★	Calving Traits	-€2	22%	★★★★★
★★★★★	Weanling Export	€109	30%	★★★★★
★★★	Beef Carcass	€104	33%	★★★
★★★★★	Replacement Value			
★★★★★	Milk & Fertility	€158	13%	★★★★★
★★★★	Calf Quality	€344	32%	★★★★
★★★★★	Other Key Traits			
★★★★★	% Difficulty Calving	4.82%	29%	★★★
	Docility	%	%	

Data Rel: 40 - 60% = Ave 20 - 40% = Below Ave <20% = Poor

Euro-Star Traits

Euro-Star Rating (ICBF, Jan

Calving Traits			Weanling Export, Beef Carcass & Replacement Calf Tr.					
Calv Diff (%)	Gest Len (days)	Mort (%)	Wean Wt Dir (kg)	Wean Calf Quality (%)	Carc Wt (kg)	Carcass Conf Score	Carcass Fat Score	Dry Matter Intake (kg)
4.82	1.77	0.08	37.76	19.53	18.59	1.2	-0.41	0.47

Replacement Milk & Fertility Traits					
Calv Int (days)	Survival (%)	Age 1st calv (days)	Wean Wt Mat (kg)	Calv Diff Mat (%)	Cull Cow (kg)
-4.35	1.22	5.62	15.96	7.16	17.71

BLUP Linear Type

MUSCLE	SKELETAL	DOCILITY	RELIABILITY
119	97		32

Comments

Pale Bull with exceptional Muscle development. Dam needs no introduction. Full brother to lot No1. www.miltonsimmentals.com

Lot 26 DERROUGH WINSTON
IE272020220080 DOB: 28-Jan-2008

Breed: Simmental
Male

Owner: Patrick Bones - Derough Kilkelly Co Mayo

EXODUS	EISENHERZ	ECKHOLM
		768
		EMU (PP)
	ROBE 93	ROMY
DERROUGH DAISY		HEYWOOD ESQUIRE
	GRETNA HOUSE SUPERSONIC	CHESTON KATIE
		HURTIG
	LAKEVIEW WILMA	BALLYBANE HELEN

Within Breed	Index	Data rel	Across Breed
★★	Suckler Beef Value €159	14%	★★★★
★★★★★	Beef Value €0	14%	★★★★
★	Calving Traits	15%	★★
★	Weanling Export €81	14%	★★
★	Beef Carcass €88	14%	★★
★★★	Replacement Value		
★★	Milk & Fertility €116	5%	★★★★
★★	Calf Quality €282	15%	★★★
★★★★★	Other Key Traits		
★★★★★	% Difficulty Calving 4.35%	21%	★★★★
	Docility %	%	

Data Rel: 40 - 60% = Ave 20 - 40% = Below Ave <20% = Poor

€uro-Star Traits Euro-Star Rating (ICBF, Jan 2

Calving Traits			Weanling Export, Beef Carcass & Replacement Calf Traits					
Calv Diff (%)	Gest Len (days)	Mort (%)	Wean Wt Dir (kg)	Wean Calf Quality (%)	Carc Wt (kg)	Carcass Conf Score	Carcass Fat Score	Dry Matter Intake (kg)
4.35	1.76	-0.08	26.03	15.9	16.05	1.13	-0.29	0.2

Replacement Milk & Fertility Traits					
Calv Int (days)	Survival (%)	Age 1st calv (days)	Wean Wt Mat (kg)	Calv Diff Mat (%)	Cull Cow (kg)
-2.6	1.15	-1.72	11.34	7.62	10.92

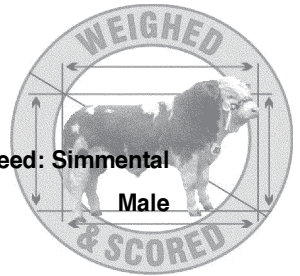
BLUP Linear Type

MUSCLE	SKELETAL	DOCILITY	RELIABILITY
111	102		16

Comments
Lovely long bull with excellent muscle. An outcross polled bull.

Lot 27 OWENMORE WILMO
 IE321143240082 DOB: 02-Feb-2008

Breed: Simmental
 Male



Owner: Anthony Scanlon - Carnaree Ballymote Co Sligo

HILLCREST KING	HILLCREST CHAMPION	GRETNA HOUSE SUPERSONIC
		CAMUS SOLITAIRE
	BALLYBANE RUTH	BALLYBANE LAD
FENAGH FELICITY		BALLYBANE FLOWER
		MOCOLLOP THORNYHILL RAMBO
	HOLLOWFIELD CLIFF	BALLYBANE ROSSITTA
		AUGHALOORA WARM
	GORTIN DEAR	GORTIN VIOLET

Within Breed Index Data rel Across Breed

★★★	Suckler Beef Value	€179	30%	★★★★★
-----	---------------------------	------	-----	-------

★★★	Beef Value			
★★★	Calving Traits	-€5	30%	★★★★★
★★	Weanling Export	€86	29%	★★★
★★★★★	Beef Carcass	€117	30%	★★★

	Replacement Value			
★★	Milk & Fertility	€91	23%	★★★★★
★★★	Calf Quality	€332	30%	★★★★★

	Other Key Traits			
★★	% Difficulty Calving	6.05%	35%	★★
	Docility	%	%	

Data Rel: 40 - 60% = Ave 20 - 40% = Below Ave <20% = Poor

€uro-Star Traits

€uro-Star Rating (ICBF, Jan 2

Calving Traits			Weanling Export, Beef Carcass & Replacement Calf Tra					
Calv Diff (%)	Gest Len (days)	Mort (%)	Wean Wt Dir (kg)	Wean Calf Quality (%)	Carc Wt (kg)	Carcass Conf Score	Carcass Fat Score	Dry Matter Intake (kg)
6.05	2.12	-0.03	25.12	18.12	26.29	1.54	-0.31	0.19

Replacement Milk & Fertility Traits					
Calv Int (days)	Survival (%)	Age 1st calv (days)	Wean Wt Mat (kg)	Calv Diff Mat (%)	Cull Cow (kg)
-1.98	0.6	-17.38	8.73	7.37	16.08

BLUP Linear Type

MUSCLE	SKELETAL	DOCILITY	RELIABILITY
123	118		42

Comments
Western Club Reserve Champion Bull calf 08.

Lot 28 CLONGUISH WARRIOR
IE251137550268 DOB: 04-Feb-2008

Breed: Simmental
Male

Owner: Joseph McGarry - Caldra Newtownforbes Co Longford

DIRNANEAN JACOB	ARKMILL FRANKLYN	RAVENSWORTH CAREFREE
		CONGEITH ANNABEL
	DIRNANEAN BOUNTY	THORNYHILL VIKING
		MONCLUR TARKA
HILLCREST NUALA ET	ROSTEN BARNEY	GRETNA HOUSE SUPERSONIC
		PARKGATE TEMPTRESS
	BALLYBANE TERESA	BALLYBANE LAD
		INCHANAPPA KATE

Within Breed Index Data rel Across Breed

★★★★★	Suckler Beef Value	€199	30%	★★★★★★
-------	--------------------	------	-----	--------

★	Beef Value			
	Calving Traits	-€11	33%	★★
★★★★	Weanling Export	€97	27%	★★★★
★★★★★	Beef Carcass	€127	28%	★★★★

	Replacement Value			
★★★★★★	Milk & Fertility	€146	14%	★★★★★★
★★★★★	Calf Quality	€353	29%	★★★★★

★	Other Key Traits			
	% Difficulty Calving	7.49%	39%	★★
	Docility	%	%	

Data Rel: 40 - 60% = Ave 20 - 40% = Below Ave <20% = Poor

€uro-Star Traits

€uro-Star Rating (ICBF, Jan 2

Calving Traits			Weanling Export, Beef Carcass & Replacement Calf Tra					
Calv Diff (%)	Gest Len (days)	Mort (%)	Wean Wt Dir (kg)	Wean Calf Quality (%)	Carc Wt (kg)	Carcass Conf Score	Carcass Fat Score	Dry Matter Intake (kg)
7.49	3.27	-0.01	33.61	17.4	31.66	1.5	-0.12	0.61

Replacement Milk & Fertility Traits					
Calv Int (days)	Survival (%)	Age 1st calv (days)	Wean Wt Mat (kg)	Calv Diff Mat (%)	Cull Cow (kg)
-5.05	1.64	-8.69	10.84	6.11	19.47

BLUP Linear Type

MUSCLE	SKELETAL	DOCILITY	RELIABILITY
110	114		31

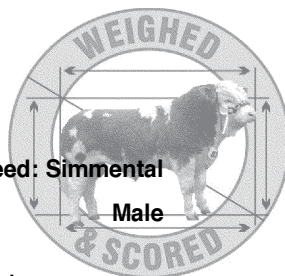
Comments

1st at many local shows and North Eastern Club Jan Calf Champion 08. View www.clonguishherd.com

Lot 29 KNOCKATEE WESTIE
IE181762420091 DOB: 12-Feb-2008

Breed: Simmental

Male



Owner: Michael & Patr Slattery - Knockatee Dunmore Co Galway

RACEVIEW KING	RACEVIEW GLADIATOR	BRINKTON BRILLIANT
		RACEVIEW BEAUTY
	KILMICHAEL DIAMOND	AWL MANITOBA SPARTAN
CLONFAD RHONDA	HILLCREST CHAMPION	KILMICHAEL SULTANA
		GRETNA HOUSE SUPERSONIC
		CAMUS SOLITAIRE
	BALLINGAR LEANNE	BALLINGAR FRANCO
		BALLINGAR GERTRUDE

Within Breed Index Data rel Across Breed

★★★★★	Suckler Beef Value	€311	38%	★★★★★
-------	--------------------	------	-----	-------

★★★	Beef Value	-€6	37%	★★★★★
★★★★★	Calving Traits			
★★★★★	Weanling Export	€149	43%	★★★★★
★★★★★	Beef Carcass	€203	41%	★★★★★

★★★	Replacement Value			
★★★★★	Milk & Fertility	€109	16%	★★★★★
★★★★★	Calf Quality	€617	42%	★★★★★

★★★	Other Key Traits			
	% Difficulty Calving	5.76%	42%	★★★
	Docility	%	%	

Data Rel: 40 - 60% = Ave 20 - 40% = Below Ave <20% = Poor

€uro-Star Traits

€uro-Star Rating (ICBF, Jan 2

Calving Traits			Weanling Export, Beef Carcass & Replacement Calf Tra						
Calv Diff (%)	Gest Len (days)	Mort (%)	Wean Wt Dir (kg)	Wean Calf Quality (%)	Carc Wt (kg)	Carcass Conf Score	Carcass Fat Score	Dry Matter Intake (kg)	
5.76	2.53	0.09	55.64	24.47	43.91	1.68	-0.96	0.49	

Replacement Milk & Fertility Traits					
Calv Int (days)	Survival (%)	Age 1st calv (days)	Wean Wt Mat (kg)	Calv Diff Mat (%)	Cull Cow (kg)
-4.46	1.04	1.27	11.62	5.29	32.47

BLUP Linear Type			
MUSCLE	SKELETAL	DOCILITY	RELIABILITY
132	122		46

Comments
Western Club Bull Calf Champion 08. Elite Bull - Top 1% on BLUP

Lot 30

TULLA WATSON

Breed: Simmental

IE131828080621

DOB: 15-Feb-2008

Male

Owner: Denis O'Halloran - Main St Tulla Co Clare

MILTON LORD-TIFFANY ET	CARNKERN TITAN	TEVIOT PANTHER
		CARNKERN NATASHA
	SEABANK TIFFANY	HERRSCHER
		STAR POLLY
TULLA SANDY	HILLCREST NAUGHTY	ROSTEN BARNEY
		HILLCREST WINNIE
	TULLA KRUSTY	RACEVIEW E-DOC
		TULLA WELCOME

Within Breed Index Data rel Across Breed

★★★★★	Suckler Beef Value	€ 186	32%	★★★★★
-------	---------------------------	-------	-----	-------

★	Beef Value			
★	Calving Traits	-€12	33%	★★
★★★★★	Weanling Export	€98	33%	★★★
★★★★★	Beef Carcass	€120	33%	★★★

	Replacement Value			
★★★★★	Milk & Fertility	€134	17%	★★★★★
★★★	Calf Quality	€330	33%	★★★★★

★	Other Key Traits			
	% Difficulty Calving	7.06%	42%	★★
	Docility	%	%	

Data Rel: 40 - 60% = Ave 20 - 40% = Below Ave <20% = Poor

€uro-Star Traits €uro-Star Rating (ICBF, Jan)

Calving Traits			Weanling Export, Beef Carcass & Replacement Calf Tr					
Calv Diff (%)	Gest Len (days)	Mort (%)	Wean Wt Dir (kg)	Wean Calf Quality (%)	Carc Wt (kg)	Carcass Conf Score	Carcass Fat Score	Dry Matter Intake (kg)
7.06	2.1	0.86	32.17	18.64	27.18	1.36	-0.3	0.42

Replacement Milk & Fertility Traits					
Calv Int (days)	Survival (%)	Age 1st calv (days)	Wean Wt Mat (kg)	Calv Diff Mat (%)	Cull Cow (kg)
-4.91	1.77	-13.04	9.33	6.92	17.51

Comments

BLUP Linear Type			
MUSCLE	SKELETAL	DOCILITY	RELIABILITY

Lot 31 TULLA WALLY

Breed: Simmental

IE131828090622

DOB: 17-Feb-2008

Male

Owner: Denis O'Halloran - Main St Tulla Co Clare

MILTON LORD-TIFFANY ET	CARNKERN TITAN	TEVIOT PANTHER
		CARNKERN NATASHA
	SEABANK TIFFANY	HERRSCHER
TULLA MOONSHINE	COVERFIELD KEVIN	STAR POLLY
		BRINKTON BRILLIANT
		BOSPHOR CALLISTO
	TULLA HANNA	RACEVIEW E-DOC
		TULLA DELILIA

Within Breed Index Data rel Across Breed

★★★★★	Suckler Beef Value	€185	31%	★★★★★
-------	---------------------------	------	-----	-------

★	Beef Value			
	Calving Traits	-€11	31%	★★
★★★	Weanling Export	€93	31%	★★★
★★★★★	Beef Carcass	€116	32%	★★★

	Replacement Value			
★★★★★	Milk & Fertility	€146	16%	★★★★★
★★★	Calf Quality	€322	32%	★★★

★	Other Key Traits			
	% Difficulty Calving	7.09%	42%	★★
	Docility	%	%	

Data Rel: 40 - 60% = Ave 20 - 40% = Below Ave <20% = Poor

€uro-Star Traits

€uro-Star Rating (ICBF, Jan 2

Calving Traits			Weanling Export, Beef Carcass & Replacement Calf Traits					
Calv Diff (%)	Gest Len (days)	Mort (%)	Wean Wt Dir (kg)	Wean Calf Quality (%)	Carc Wt (kg)	Carcass Conf Score	Carcass Fat Score	Dry Matter Intake (kg)
7.09	1.5	0.95	31.86	16.92	26.87	1.2	-0.28	0.44

Replacement Milk & Fertility Traits					
Calv Int (days)	Survival (%)	Age 1st calv (days)	Wean Wt Mat (kg)	Calv Diff Mat (%)	Cull Cow (kg)
-4.28	1.92	-2.98	11.8	6.26	19

BLUP Linear Type

MUSCLE	SKELETAL	DOCILITY	RELIABILITY
105	110		31

Comments

Lot 32 CLONGUISH WALLACE
 IE251137560269 DOB: 22-Feb-2008

Breed: Simmental
 Male

Owner: Joseph McGarry - Caldra Newtownforbes Co Longford

KILBRIDE FARM NEWRY	DOVEFIELDS GALLANT	CAMUS BRANDY
		HEVINGHAM PIAF
	KILBRIDE FARM EUNICE D29	MONCUR SENSATION
KILNALAG JUDY		KILBRIDE FARM EUNICE A25
		DIRNANEAN NUGGET
	CLONGUISH FRANK	
		CLONGUISH ROSE
	KILNALAG FIDELIS	BALLYBANE CLIFF
		KILNALAG ANN

Within Breed Index Data rel Across Breed

★★★★★	Suckler Beef Value	€196	27%	★★★★★
-------	---------------------------	------	-----	-------

★	Beef Value			
★★★★★	Calving Traits	-€11	28%	★★
★★★★★	Weanling Export	€98	27%	★★★
★★★★★	Beef Carcass	€121	27%	★★★

	Replacement Value			
★★★★★	Milk & Fertility	€157	9%	★★★★★
★★★★★	Calf Quality	€342	28%	★★★★★

★	Other Key Traits			
	% Difficulty Calving	7.64%	41%	★★
	Docility	%	%	

Data Rel: 40 - 60% = Ave 20 - 40% = Below Ave <20% = Poor

€uro-Star Traits €uro-Star Rating (ICBF, Jan 2

Calving Traits			Weanling Export, Beef Carcass & Replacement Calf Trai					
Calv Diff (%)	Gest Len (days)	Mort (%)	Wean Wt Dir (kg)	Wean Calf Quality (%)	Carc Wt (kg)	Carcass Conf Score	Carcass Fat Score	Dry Matter Intake (kg)
7.64	2.06	0.34	33.81	17.68	27.98	1.32	-0.22	0.49

Replacement Milk & Fertility Traits					
Calv Int (days)	Survival (%)	Age 1st calv (days)	Wean Wt Mat (kg)	Calv Diff Mat (%)	Cull Cow (kg)
-4.01	1.16	-5.21	12.4	5.72	13.06

BLUP Linear Type			
MUSCLE	SKELETAL	DOCILITY	RELIABILITY
113	123		29

Comments
 View www.clonguishherd.com

Lot 33 TULLA WILLIE

Breed: Simmental

IE131828090630 DOB: 09-Mar-2008

Male

Owner: Denis O'Halloran - Main St Tulla Co Clare

OMORGA PRINCE	STERLING FLINT	BRINKTON COUNT
		STERLING NOONTIMES WHITEWINE
	CLEENAGH DAFFODIL	CARNKERN TITAN
TULLA HAPPY		CLEENAGH KAY
	RACEVIEW E-DOC	MAGHERACRIGAN SPECIAL
		RACEVIEW BEAUTY
	TULLA WELCOME	ENFIELD BENZ
		CONNELL TANYA

Within Breed Index Data rel Across Breed

★★★	Suckler Beef Value	€175	24%	★★★★★
-----	---------------------------	------	-----	-------

★★	Beef Value			
★★★	Calving Traits	-€10	24%	★★★
★★★★★	Weanling Export	€99	28%	★★★★★
★★	Beef Carcass	€101	25%	★★

	Replacement Value			
★★★★★	Milk & Fertility	€162	9%	★★★★★
★★	Calf Quality	€294	27%	★★★

★	Other Key Traits			
	% Difficulty Calving	6.96%	34%	★★
	Docility	%	%	

Data Rel: 40 - 60% = Ave 20 - 40% = Below Ave <20% = Poor

€uro-Star Traits

€uro-Star Rating (ICBF, Jan 2012)

Calving Traits			Weanling Export, Beef Carcass & Replacement Calf Traits					
Calv Diff (%)	Gest Len (days)	Mort (%)	Wean Wt Dir (kg)	Wean Calf Quality (%)	Carc Wt (kg)	Carcass Conf Score	Carcass Fat Score	Dry Matter Intake (kg)
6.96	2.59	0.3	32.7	18.74	20.77	1.34	-0.2	0.48

Replacement Milk & Fertility Traits					
Calv Int (days)	Survival (%)	Age 1st calv (days)	Wean Wt Mat (kg)	Calv Diff Mat (%)	Cull Cow (kg)
-3.06	1.12	-22.33	11.65	6.28	12.31

BLUP Linear Type

MUSCLE	SKELETAL	DOCILITY	RELIABILITY
111	97		29

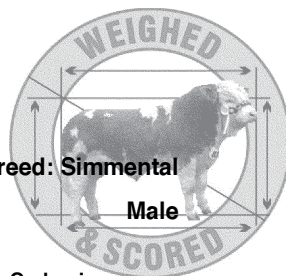
Comments

Lot 34 CLONAGH WILLIE-WONKA

IE221283310660 DOB: 12-Mar-2008

Breed: Simmental

Male



Owner: Garreth T Behan - Clonagowan Ballyfin Portlaoise Co Laois

WOODHALL PREMIER	MACKNEY HECTOR	MACKNEY FERGUS
		WOODHALL FANTASTIC
	WOODHALL KIM	CARKERN TITAN
		WOODHALL BARONESS
CLONAGH KEENA	GRETNA HOUSE SUPERSONIC	HEYWOOD ESQUIRE
		CHESTON KATIE
	CLONAGH HAZEL	BRINKTON BRILLIANT

Within Breed Index Data rel Across Breed

★★★★★	Suckler Beef Value	€251	27%	★★★★★
-------	---------------------------	------	-----	-------

★★	Beef Value	-€9	19%	★★★
★★★★★	Calving Traits			
★★★★★	Weanling Export	€139	41%	★★★★★
★★★★★	Beef Carcass	€153	34%	★★★★★

	Replacement Value			
★★★★★	Milk & Fertility	€134	10%	★★★★★
★★★★★	Calf Quality	€484	36%	★★★★★

★★	Other Key Traits			
	% Difficulty Calving	6.88%	33%	★★
	Docility	%	%	

Data Rel: 40 - 60% = Ave 20 - 40% = Below Ave <20% = Poor

€uro-Star Traits

€uro-Star Rating (ICBF, Jan 2

Calving Traits			Weanling Export, Beef Carcass & Replacement Calf Traits					
Calv Diff (%)	Gest Len (days)	Mort (%)	Wean Wt Dir (kg)	Wean Calf Quality (%)	Carc Wt (kg)	Carcass Conf Score	Carcass Fat Score	Dry Matter Intake (kg)
6.88	2.38	0.2	56.16	20.21	31.52	1.17	-0.52	0.8

Replacement Milk & Fertility Traits					
Calv Int (days)	Survival (%)	Age 1st calv (days)	Wean Wt Mat (kg)	Calv Diff Mat (%)	Cull Cow (kg)
-4.23	1.67	3.98	12.93	5.67	26.99

BLUP Linear Type			
MUSCLE	SKELETAL	DOCILITY	RELIABILITY
123	127		41

Comments
 Half brother to Vom Vumb 2nd to T-Rex at Expo. Also to Tom Tumb 1st at Tullamore Sale 07 and Sexy Lady champion at Roscrea sale 06. Note Grand dam Edel. IBR, BVD, EBL and Johnes free. Photo on www.clonaghsimmentals.com

Lot 35 DERROUGH VIOLET
 IE272020270077 DOB: 27-May-2007

Breed: Simmental
 Female

Owner: Patrick Bones - Derough Kilkelly Co Mayo

MARBELHILL LIAM	RICHARDSTOWN JUMBO	HAMLET
		IRLA IMP.75A
	LAKEVIEW EMERALD	FREIGHDUFF BRENDAN
		LAKEVIEW VIOLET
DERROUGH PEGGY	RIVERDALE FIGARO	CAMUS BRANDY
		SOLITUDE CHINA GIRL
	DERROUGH DANIELLE	GREтна HOUSE SUPERSONIC
		LAKEVIEW WANDA

Within Breed		Index	Data rel	Across Breed
★★★★★	Suckler Beef Value	€199	31%	★★★★★

★★★	Beef Value			
★★★	Calving Traits	-€6	30%	★★★★★
★★★	Weanling Export	€96	32%	★★★
★★★★★	Beef Carcass	€121	32%	★★★

	Replacement Value			
★★★★★	Milk & Fertility	€140	21%	★★★★★
★★★★★	Calf Quality	€355	32%	★★★★★

	Other Key Traits			
★★★	% Difficulty Calving	5.61%	32%	★★★
	Docility	%	%	

Data Rel: 40 - 60% = Ave 20 - 40% = Below Ave <20% = Poor

€uro-Star Traits

€uro-Star Rating (ICBF, Jan 2

Calving Traits			Weanling Export, Beef Carcass & Replacement Calf Traits					
Calv Diff (%)	Gest Len (days)	Mort (%)	Wean Wt Dir (kg)	Wean Calf Quality (%)	Carc Wt (kg)	Carcass Conf Score	Carcass Fat Score	Dry Matter Intake (kg)
5.61	2.23	0.3	31.84	18.09	28.73	1.63	-0.22	0.55

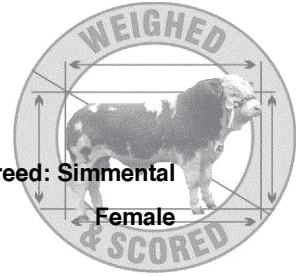
Replacement Milk & Fertility Traits					
Calv Int (days)	Survival (%)	Age 1st calv (days)	Wean Wt Mat (kg)	Calv Diff Mat (%)	Cull Cow (kg)
-1.4	1.05	-19.78	13.25	7.39	17.08

BLUP Linear Type			
MUSCLE	SKELETAL	DOCILITY	RELIABILITY
115	107		26

Comments
 Lovely long, tall red and white heifer with excellent muscle and conformation

Lot 36 MARYLAND VALENCIA
IE361101180236 DOB: 04-Sep-2007

Breed: Simmental
Female



Owner: Michael Mckiernan - Creggy The Pigeons Athlone Co Westmeath

MONADUFF RANDEL	MONADUFF LEGEND	DIRNANEAN NUGGET
		MONADUFF GRACE
	HILLCREST MO ET	ROSTEN BARNEY
MONADUFF SISSY		HILLCREST WINNIE
		BRINKTON SOVREIGN
	MONADUFF LORD	HILLCREST EVITA
	SEEPA MISSY	STERLING PARLIAMENTARIAN
		HILLCREST GERALDINE

Within Breed Index Data rel Across Breed

★★★★★	Suckler Beef Value	€215	23%	★★★★★
-------	--------------------	------	-----	-------

★	Beef Value			
★★★★★	Calving Traits	-€13	21%	★★
★★★★★	Weanling Export	€106	27%	★★★★★
★★★★★	Beef Carcass	€141	27%	★★★★★

★★★★★	Replacement Value			
★★★★★	Milk & Fertility	€140	6%	★★★★★
★★★★★	Calf Quality	€389	27%	★★★★★

★	Other Key Traits			
	% Difficulty Calving	9.88%	37%	★
	Docility	%	%	

Data Rel: 40 - 60% = Ave 20 - 40% = Below Ave <20% = Poor

€uro-Star Traits €uro-Star Rating (ICBF, Jan 2

Calving Traits			Weanling Export, Beef Carcass & Replacement Calf Trai					
Calv Diff (%)	Gest Len (days)	Mort (%)	Wean Wt Dir (kg)	Wean Calf Quality (%)	Carc Wt (kg)	Carcass Confr Score	Carcass Fat Score	Dry Matter Intake (kg)
9.88	2.12	-0.27	36.29	19.18	35.3	1.56	-0.24	0.62

Replacement Milk & Fertility Traits					
Calv Int (days)	Survival (%)	Age 1st calv (days)	Wean Wt Mat (kg)	Calv Diff Mat (%)	Cull Cow (kg)
-3.41	1.06	-20.08	9.89	5.02	20.43

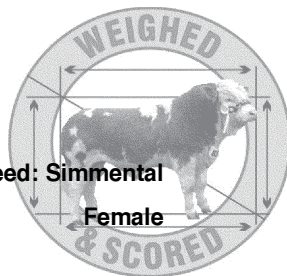
BLUP Linear Type

MUSCLE	SKELETAL	DOCILITY	RELIABILITY
116	118		37

Comments

Lot 37 KILDUFF VIVIENNE
IE121098580387 DOB: 02-Oct-2007

Breed: Simmental
Female



Owner: Robert John Dunne - Corporation Lands Belturbet Co Cavan

KILBRIDE FARM NEWRY	DOVEFIELDS GALLANT	CAMUS BRANDY
		HEVINGHAM PIAF
	KILBRIDE FARM EUNICE D29	MONCUR SENSATION
		KILBRIDE FARM EUNICE A25
KILDUFF RUBY	BALLYDUFF JEWELLER	SACOMBE WISHFULL THINKING
		BALLYDUFF WENDY
	KILDUFF CINDY	CLEENAGH VICEROY
		CAMOLIN JINGLE

Within Breed Index Data rel Across Breed

★★	Suckler Beef Value	€167	33%	★★★★
----	---------------------------	------	-----	------

★★	Beef Value			
★★★	Calving Traits	-€10	30%	★★★
★★★	Weanling Export	€93	38%	★★★
★★★	Beef Carcass	€104	38%	★★

	Replacement Value			
★★★	Milk & Fertility	€123	11%	★★★★
★★★	Calf Quality	€296	38%	★★★

	Other Key Traits			
★	% Diffculty Calving	7.19%	41%	★★
	Docility	%	%	

Data Rel: 40 - 60% = Ave 20 - 40% = Below Ave <20% = Poor

€uro-Star Traits

€uro-Star Rating (ICBF, Jan)

Calving Traits			Weanling Export, Beef Carcass & Replacement Calf Traits					
Calv Diff (%)	Gest Len (days)	Mort (%)	Wean Wt Dir (kg)	Wean Calf Quality (%)	Carc Wt (kg)	Carcass Conf Score	Carcass Fat Score	Dry Matter Intake (kg)
7.19	2.18	0.28	30.79	17.55	23.67	1.14	-0.06	0.45

Replacement Milk & Fertility Traits					
Calv Int (days)	Survival (%)	Age 1st calv (days)	Wean Wt Mat (kg)	Calv Diff Mat (%)	Cull Cow (kg)
-2.12	-0.11	-3.86	11.68	5.71	8.13

BLUP Linear Type

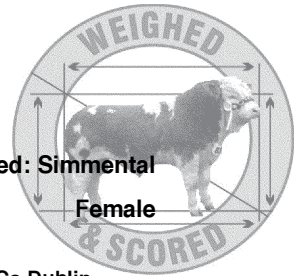
MUSCLE	SKELETAL	DOCILITY	RELIABILITY
106	109		39

Comments

Excellent quality heifer with super conformation and bone. Excellent movement. This heifer has the breeding and ability to make an exceptional cow in any herd.

Lot 38 CURAHEEN VERONA
 IE171059810172 DOB: 04-Oct-2007

Breed: Simmental
 Female



Owner: David Wall - Curaheen Hazelhatch Road Newcastle Co Dublin

HILLCREST CHAMPION	GRETNA HOUSE SUPERSONIC	HEYWOOD ESQUIRE
		CHESTON KATIE
	CAMUS SOLITARE	SIEGFRIED
		STAR FANNY
DELFFUR POPPY R70	KILBRIDE FARM MOVILLE	MILNAFUJA GRADUATE
		MILNAFUJA JOLLY
	DELFFUR POPPY	ROSTEN BARNEY
		DELFFUR POPPY

Within Breed	Index	Data rel	Across Breed
★★★★★	Suckler Beef Value €248	38%	★★★★★
★★★★★	Beef Value		
★★★★★	Calving Traits €4	35%	★★★★★
★★★★★	Weanling Export €109	44%	★★★★★
★★★★★	Beef Carcass €147	41%	★★★★★
	Replacement Value		
★★★★★	Milk & Fertility €125	18%	★★★★★
★★★★★	Calf Quality €474	42%	★★★★★
	Other Key Traits		
★★★★★	% Difficulty Calving 3.93%	38%	★★★★★
	Docility %	%	

Data Rel: 40 - 60% = Ave 20 - 40% = Below Ave <20% = Poor

€uro-Star Traits Euro-Star Rating (ICBF, Jan 2

Calving Traits			Weanling Export, Beef Carcass & Replacement Calf Traits					
Calv Diff (%)	Gest Len (days)	Mort (%)	Wean Wt Dir (kg)	Wean Calf Quality (%)	Carc Wt (kg)	Carcass Conf Score	Carcass Fat Score	Dry Matter Intake (kg)
3.93	1.45	-0.5	38.86	18.86	34.24	1.36	-0.52	0.49

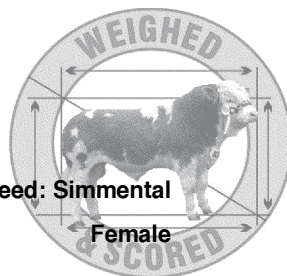
Replacement Milk & Fertility Traits					
Calv Int (days)	Survival (%)	Age 1st calv (days)	Wean Wt Mat (kg)	Calv Diff Mat (%)	Cull Cow (kg)
-5.43	1.49	-0.68	12.21	7.07	27.13

BLUP Linear Type			
MUSCLE	SKELETAL	DOCILITY	RELIABILITY
111	117		45

Comments

Lot 39 CLONAGH VANESSA
 IE221283340606 DOB: 16-Nov-2007

Breed: Simmental
 Female



Owner: Garreth T Behan - Clonagowan Ballyfin Portlaoise Co Laois

KILBRIDE FARM NEWRY	DOVEFIELDS GALLANT	CAMUS BRANDY
		HEVINGHAM PIAF
	KILBRIDE FARM EUNICE D29	MONCUR SENSATION
		KILBRIDE FARM EUNICE A25
CLONAGH ROCANA	FARDROMIN LIAM	COOLBEGGAN BART
		SLANEYVIEW AUDREY
	CLONAGH KITTY	MOUNT ROYAL WESTERN
		CLONAGH HELEN

Within Breed Index Data rel Across Breed

★★★★★	Suckler Beef Value	€215	36%	★★★★★
-------	---------------------------	------	-----	-------

★★★★★	Beef Value	€0	35%	★★★★★
★★★★★	Calving Traits	€0	35%	★★★★★
★★★★★	Weanling Export	€107	42%	★★★★★
★★★★	Beef Carcass	€116	39%	★★★

★★★★★	Replacement Value			
★★★★★	Milk & Fertility	€176	10%	★★★★★
★★★★★	Calf Quality	€378	41%	★★★★★

★★★★★	Other Key Traits			
★★★★★	% Difficulty Calving	3.77%	41%	★★★★★
	Docility	%	%	

Data Rel: 40 - 60% = Ave 20 - 40% = Below Ave <20% = Poor

€uro-Star Traits €uro-Star Rating (ICBF, Jan 2

Calving Traits			Weanling Export, Beef Carcass & Replacement Calf Tra					
Calv Diff (%)	Gest Len (days)	Mort (%)	Wean Wt Dir (kg)	Wean Calf Quality (%)	Carc Wt (kg)	Carcass Conf Score	Carcass Fat Score	Dry Matter Intake (kg)
3.77	1.68	0.35	37.24	19.24	23.81	1.26	-0.31	0.47

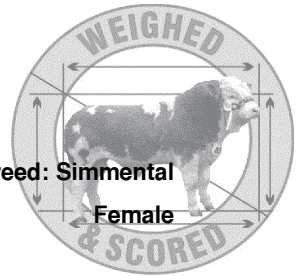
Replacement Milk & Fertility Traits					
Calv Int (days)	Survival (%)	Age 1st calv (days)	Wean Wt Mat (kg)	Calv Diff Mat (%)	Cull Cow (kg)
-3.77	1.34	-17.14	13.97	6.92	14.54

BLUP Linear Type			
MUSCLE	SKELETAL	DOCILITY	RELIABILITY
112	112		43

Comments
 Dams G-dam Helen bred res champion here 08 - Valerie sold for top price of 5000. Also bred champion bull Topper in 06 - sold for export to N. Ire. Outwintered. Johnes / BVD free. Photo on www.clonagsimmentals.com

Lot 40 CLONAGH VESTA
 IE221283350607 DOB: 17-Nov-2007

Breed: Simmental
 Female



Owner: Garreth T Behan - Clonagowan Ballyfin Portlaoise Co Laois

HOCKENHULL MAVERICK	HOCKENHULL KOJAC	HOCKENHULL GAINSBOROUGH
		HOCKENHULL GIRLIE 2ND
	HOCKENHULL LOUISE 8TH	GRETNA HOUSE SUPERSONIC
		HOCKENHULL LOUISE
CLONAGH HYACINTH	BALLYBANE EDWARD	HILLCREST BUTCHER
		BALLYBANE VISION
		CORAH KENT
	SEABANK ROSEBUD	EURO MELANIE

Within Breed	Index	Data rel	Across Breed
★★★★	Suckler Beef Value €185	25%	★★★★★
★★★	Beef Value		
★★★★	Calving Traits -€6	16%	★★★★
★★★★★	Weanling Export €115	38%	★★★★
★★★★	Beef Carcass €117	33%	★★★
	Replacement Value		
★	Milk & Fertility €64	9%	★★★★
★★★★	Calf Quality €368	34%	★★★★
	Other Key Traits		
★★★★	% Difficulty Calving 5.07%	22%	★★★
	Docility %	%	

Data Rel: 40 - 60% = Ave 20 - 40% = Below Ave <20% = Poor

Euro-Star Traits

Euro-Star Rating (ICBF, Jan

Calving Traits			Weanling Export, Beef Carcass & Replacement Calf Tr					
Calv Diff (%)	Gest Len (days)	Mort (%)	Wean Wt Dir (kg)	Wean Calf Quality (%)	Carc Wt (kg)	Carcass Conif Score	Carcass Fat Score	Dry Matter Intake (kg)
5.07	2.75	0.29	40.53	20.36	21.86	1.27	-0.32	0.46

Replacement		Milk & Fertility Traits			
Calv Int (days)	Survival (%)	Age 1st calv (days)	Wean Wt Mat (kg)	Calv Diff Mat (%)	Cull Cow (kg)
-4.12	1.33	-0.54	4.73	6.56	16.46

BLUP Linear Type

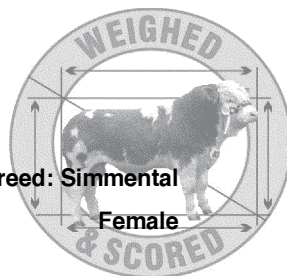
MUSCLE	SKELETAL	DOCILITY	RELIABILITY
117	101		38

Comments

Dam Hyacinth bred show heifer for me in the past - prize winners on National shows. Wide plae heifer. Outwintered. Johnes / BVD free. Photo on www.clonaghsimmentals.com

Lot 41 CLONAGH VIKKI
 IE221283390610 DOB: 24-Nov-2007

Breed: Simmental
 Female



Owner: Garreth T Behan - Clonagowan Ballyfin Portlaoise Co Laois

MILTON LORD-TIFFANY ET	CARNKERN TITAN	TEVIOT PANTHER
		CARNKERN NATASHA
	SEABANK TIFFANY	HERRSCHER
		STAR POLLY
CLONAGH JANIE	BALLYBANE EDWARD	HILLCREST BUTCHER
		BALLYBANE VISION
	CLONAGH FANNY	GRETNA HOUSE SUPERSONIC
		CLOUGH WINNIE

Within Breed	Index	Data rel	Across Breed
★★★★★	Suckler Beef Value €239	40%	★★★★★
★	Beef Value		
★★★★★	Calving Traits -€13	38%	★★
★★★★★	Weanling Export €126	46%	★★★★★
★★★★★	Beef Carcass €151	42%	★★★★
Replacement Value			
★★★★★	Milk & Fertility €157	18%	★★★★★
★★★★★	Calf Quality €435	44%	★★★★★
Other Key Traits			
★	% Difficulty Calving 7.65%	43%	★★
	Docility %	%	

Data Rel: 40 - 60% = Ave 20 - 40% = Below Ave <20% = Poor

€uro-Star Traits

€uro-Star Rating (ICBF, Jan

Calving Traits			Weanling Export, Beef Carcass & Replacement Calf Traits					
Calv Diff (%)	Gest Len (days)	Mort (%)	Wean Wt Dir (kg)	Wean Calf Quality (%)	Carc Wt (kg)	Carcass Conf Score	Carcass Fat Score	Dry Matter Intake (kg)
7.65	2	0.8	45.04	21.66	32.52	1.55	-0.49	0.57

Replacement Milk & Fertility Traits					
Calv Int (days)	Survival (%)	Age 1st calv (days)	Wean Wt Mat (kg)	Calv Diff Mat (%)	Cull Cow (kg)
-5.99	2.4	-5.78	10.88	6.04	22.69

BLUP Linear Type

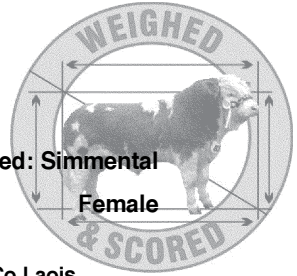
MUSCLE	SKELETAL	DOCILITY	RELIABILITY
124	116		46

Comments

Dark red sweet heifer- all the stars and figures you want. Outwintered. Johnes / BVD free. Photo on www.clonaghsimmentals.com

Lot 42 CLONAGH VIRENDA
IE221283310611 DOB: 25-Nov-2007

Breed: Simmental
Female



Owner: Garreth T Behan - Clonagowan Ballyfin Portlaoise Co Laois

HILLCREST KING	HILLCREST CHAMPION	GRETNA HOUSE SUPERSONIC
		CAMUS SOLITAIRE
	BALLYBANE RUTH	BALLYBANE LAD
CLONAGH KARI		BALLYBANE FLOWER
	BALLYBANE EDWARD	HILLCREST BUTCHER
		BALLYBANE VISION
		BLACKFORD TRIDENT
	CLONAGH DIANA	CLONAGH ANNIE

Within Breed	Index	Data rel	Across Breed
★★★★★	Suckler Beef Value €204	42%	★★★★★

★	Beef Value		
★★★★★	Calving Traits -€13	40%	★★
★★★★★	Weanling Export €101	47%	★★★★★
★★★★★	Beef Carcass €142	44%	★★★★★

★	Replacement Value		
★★★★★	Milk & Fertility €86	24%	★★★★★
★★★★★	Calf Quality €398	45%	★★★★★

★	Other Key Traits		
	% Difficulty Calving 9.42%	42%	★
	Docility %	%	

Data Rel: 40 - 60% = Ave 20 - 40% = Below Ave <20% = Poor

€uro-Star Traits

€uro-Star Rating (ICBF, Jan 2

Calving Traits			Weanling Export, Beef Carcass & Replacement Calf Traits					
Calv Diff (%)	Gest Len (days)	Mort (%)	Wean Wt Dir (kg)	Wean Calf Quality (%)	Carc Wt (kg)	Carcass Conf Score	Carcass Fat Score	Dry Matter Intake (kg)
9.42	2.41	-0.15	38.97	15.54	32.13	1.24	-0.45	0.42

Replacement Milk & Fertility Traits					
Calv Int (days)	Survival (%)	Age 1st calv (days)	Wean Wt Mat (kg)	Calv Diff Mat (%)	Cull Cow Mat (%)
-3.8	0.67	-3.83	9.23	5.88	27.14

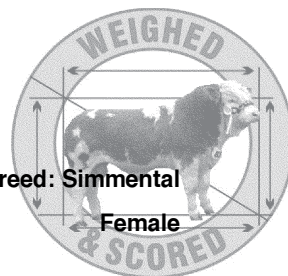
BLUP Linear Type

MUSCLE	SKELETAL	DOCILITY	RELIABILITY
103	121		47

Comments
Dark red heifer. Full sister to Roxanna champion yearling (giving away 4 months) heifer Nov 05. Johnes / BVD free. Photo on www.clonaghsimmentals.com

Lot 43 KILDUFF VANESSA
 IE121098540400 DOB: 03-Dec-2007

Breed: Simmental
 Female



Owner: Robert John Dunne - Corporation Lands Belturbet Co Cavan

DIRNANEAN JACOB	ARKMILL FRANKLYN	RAVENSWORTH CAREFREE
		CONGEITH ANNABEL
		THORNYHILL VIKING
	DIRNANEAN BOUNTY	MONCUR TARKA
KILDUFF GINA	HILLCREST BUTCHER	MAGHERACRIGAN SPECIAL
		CAMUS SOLITARE
	KILDUFF CINDY	CLEENAGH VICEROY
		CAMOLIN JINGLE

Within Breed Index Data rel Across Breed

★★★	Suckler Beef Value	€182	32%	★★★★★
-----	---------------------------	------	-----	-------

★★	Beef Value			
★★	Calving Traits	-€8	25%	★★★
★★	Weanling Export	€89	43%	★★★
★★★★★	Beef Carcass	€117	40%	★★★

★★★	Replacement Value			
★★★	Milk & Fertility	€120	14%	★★★★★
★★★	Calf Quality	€324	41%	★★★

★★★	Other Key Traits			
	% Difficulty Calving	5.55%	32%	★★★
	Docility	%	%	

Data Rel: 40 - 60% = Ave 20 - 40% = Below Ave <20% = Poor

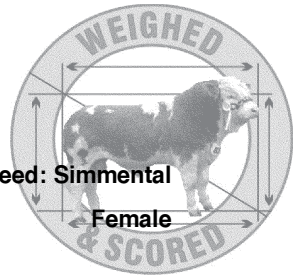
€uro-Star Traits €uro-Star Rating (ICBF, Jan 2017)

Calving Traits			Weanling Export, Beef Carcass & Replacement Calf Traits					
Calv Diff (%)	Gest Len (days)	Mort (%)	Wean Wt Dir (kg)	Wean Calf Quality (%)	Carc Wt (kg)	Carcass Conf Score	Carcass Fat Score	Dry Matter Intake (kg)
5.55	3.5	0.1	25.41	19.19	29.85	1.63	-0.2	0.45

Replacement Milk & Fertility Traits					
Calv Int (days)	Survival (%)	Age 1st calv (days)	Wean Wt Mat (kg)	Calv Diff Mat (%)	Cull Cow (kg)
-5.45	1.22	-2.35	9.62	6.29	19.14

Comments
 Good quality heifer with exceptional breeding. Gina is one of the top breeding cows in the herd. Her last bull was interbreed in Ballybay bull sale.

BLUP Linear Type			
MUSCLE	SKELETAL	DOCILITY	RELIABILITY
114	108		39



Lot 44 AUROCH WYOMIE (ET)
IE171059840191 DOB: 10-Jan-2008

Breed: Simmental

Female

Owner: David Wall - Curaheen Hazelhatch Road Newcastle Co Dublin

HOCKENHULL MAVERICK	HOCKENHULL KOJAC	HOCKENHULL GAINSBOROUGH
		HOCKENHULL GIRLIE 2ND
	HOCKENHULL LOUISE 8TH	GRETNA HOUSE SUPERSONIC
		HOCKENHULL LOUISE
RACEVIEW MISTY-JADE	RACEVIEW KING	RACEVIEW GLADIATOR
		KILMICHAEL DIAMOND
	RACEVIEW JADE	CAMUS BRANDY
		RACEVIEW BARONESS

Within Breed Index Data rel Across Breed

★★★	Suckler Beef Value	€169	25%	★★★★★
-----	---------------------------	------	-----	-------

★★★	Beef Value			
★★★	Calving Traits	-€6	15%	★★★★★
★★★★★	Weanling Export	€103	40%	★★★★★
★★★	Beef Carcass	€108	34%	★★★

	Replacement Value			
★	Milk & Fertility	€66	7%	★★★★★
★★★	Calf Quality	€330	35%	★★★★★

	Other Key Traits			
★★★★★	% Difficulty Calving	4.95%	20%	★★★
	Docility	%	%	

Data Rel: 40 - 60% = Ave 20 - 40% = Below Ave <20% = Poor

€uro-Star Traits €uro-Star Rating (ICBF, Jan 2

Calving Traits			Weanling Export, Beef Carcass & Replacement Calf Tra					
Calv Diff (%)	Gest Len (days)	Mort (%)	Wean Wt Dir (kg)	Wean Calf Quality (%)	Carc Wt (kg)	Carcass Conf Score	Carcass Fat Score	Dry Matter Intake (kg)
4.95	2.75	0.38	34.76	19.19	20.42	1.14	-0.31	0.33

Replacement Milk & Fertility Traits					
Calv Int (days)	Survival (%)	Age 1st calv (days)	Wean Wt Mat (kg)	Calv Diff Mat (%)	Cull Cow (kg)
-3.02	0.9	-1.34	5.85	6.38	14.67

BLUP Linear Type			
MUSCLE	SKELETAL	DOCILITY	RELIABILITY
113	105		40

Comments

Lot 45 CLONGUISH WENDY
 IE251137540267 DOB: 02-Feb-2008

Breed: Simmental
 Female

Owner: Joseph McGarry - Caldra Newtownforbes Co Longford

DIRNANEAN JACOB	ARKMILL FRANKLYN	RAVENSWORTH CAREFREE
		CONGEITH ANNABEL
	DIRNANEAN BOUNTY	THORNYHILL VIKING
MONADUFF NUA	HILLCREST JACKSON ET	MONCUR TARKA
		BRINKTON SOVREIGN
		BALLYBANE PRIM
	MONADUFF HEAVEN	MONADUFF FUSILIER
		WOODSIDE DREAMER

Within Breed Index Data rel Across Breed

★★★★★	Suckler Beef Value	€218	30%	★★★★★
-------	---------------------------	------	-----	-------

★★★	Beef Value			
★★★	Calving Traits	-€4	32%	★★★★★
★★★	Weanling Export	€95	29%	★★★
★★★★★	Beef Carcass	€134	29%	★★★★★

	Replacement Value			
★★★★★	Milk & Fertility	€142	12%	★★★★★
★★★★★	Calf Quality	€397	31%	★★★★★

★★★★★	Other Key Traits			
★★★★★	% Difficulty Calving	4.52%	40%	★★★★★
	Docility	%	%	

Data Rel: 40 - 60% = Ave 20 - 40% = Below Ave <20% = Poor

€uro-Star Traits

€uro-Star Rating (ICBF, Jan 2

Calving Traits			Weanling Export, Beef Carcass & Replacement Calf Trai					
Calv Diff (%)	Gest Len (days)	Mort (%)	Wean Wt Dir (kg)	Wean Calf Quality (%)	Carc Wt (kg)	Carcass Conf Score	Carcass Fat Score	Dry Matter Intake (kg)
4.52	2.82	0.15	32.95	16.98	31.72	1.61	-0.28	0.46

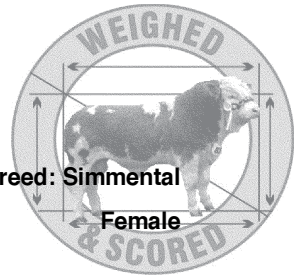
Replacement Milk & Fertility Traits					
Calv Int (days)	Survival (%)	Age 1st calv (days)	Wean Wt Mat (kg)	Calv Diff Mat (%)	Cull Cow (kg)
-3.45	1.32	-13.21	11.97	6.69	18.89

BLUP Linear Type			
MUSCLE	SKELETAL	DOCILITY	RELIABILITY
112	109		29

Comments
View www.clonguishherd.com

Lot 46 CURAHEEN WICHITA
IE171059880195 DOB: 10-Feb-2008

Breed: Simmental
Female



Owner: David Wall - Curaheen Hazelhatch Road Newcastle Co Dublin

RACEVIEW KING	RACEVIEW GLADIATOR	BRINKTON BRILLIANT
		RACEVIEW BEAUTY
	KILMICHAEL DIAMOND	AWL MANITOBA SPARTAN
BLACKFORD SISKIN	KILBRIDE FARM MILLAR	KILMICHAEL SULTANA
		CLEENAGH FLASHER
		KILBRIDE FARM DORA
	BLACKFORD MAVIS	ROSTEN BARNEY
		BLACKFORD ABIGAIL

Within Breed Index Data rel Across Breed

★★★★★	Suckler Beef Value	€197	33%	★★★★★
-------	---------------------------	------	-----	-------

★	Beef Value			
	Calving Traits	-€11	27%	★★
★★★★★	Weanling Export	€105	44%	★★★★★
★★★★★	Beef Carcass	€120	40%	★★★

	Replacement Value			
★★★★★	Milk & Fertility	€153	15%	★★★★★
★★★★★	Calf Quality	€348	41%	★★★★★

★	Other Key Traits			
	% Difficulty Calving	7.06%	35%	★★
	Docility	%	%	

Data Rel: 40 - 60% = Ave 20 - 40% = Below Ave <20% = Poor

€uro-Star Traits

€uro-Star Rating (ICBF, Jan 2

Calving Traits			Weanling Export, Beef Carcass & Replacement Calf Trai					
Calv Diff (%)	Gest Len (days)	Mort (%)	Wean Wt Dir (kg)	Wean Calf Quality (%)	Carc Wt (kg)	Carcass Conf Score	Carcass Fat Score	Dry Matter Intake (kg)
7.06	2.71	0.31	36.44	18.87	25.12	1.04	-0.47	0.37

Replacement Milk & Fertility Traits					
Calv Int (days)	Survival (%)	Age 1st calv (days)	Wean Wt Mat (kg)	Calv Diff Mat (%)	Cull Cow (kg)
-4.55	1.27	-4.18	11.97	5	19.3

BLUP Linear Type

MUSCLE	SKELETAL	DOCILITY	RELIABILITY
110	124		46

Comments

Lot 47 CLONGUISH WANDA
 IE251137580270 DOB: 25-Feb-2008

Breed: Simmental
 Female

Owner: Joseph Mcgarry - Caldra Newtownforbes Co Longford

BROGEEN SUPREMO	BALLAGAN KELLY	SIEGFRIED
		MILLIE
	BROGEEN NADINE	BROGEEN KLEIN
		ALLOW ANNIE
MOYESSA FRANCE	GRETNA HOUSE SUPERSONIC	HEYWOOD ESQUIRE
		CHESTON KATIE
	MOYESSA CECILY	ENFIELD HURRICANE HUGO
		MOYESSA LELIA

Within Breed	Index	Data rel	Across Breed	
★	Suckler Beef Value €143	17%	★★★	
★★★★	Beef Value	-€7	15%	★★★★
★★★★	Calving Traits	€92	18%	★★★★
★	Beef Carcass €81	19%	★★	
★★★★★	Replacement Value			
★	Milk & Fertility €127	9%	★★★★★	
	Calf Quality €237	19%	★★	
★★★★	Other Key Traits			
	% Difficulty Calving 5.52%	21%	★★★★	
	Docility %	%		

Data Rel: 40 - 60% = Ave 20 - 40% = Below Ave <20% = Poor

€uro-Star Traits

€uro-Star Rating (ICBF, Jan 2012)

Calving Traits			Weanling Export, Beef Carcass & Replacement Calf Traits					
Calv Diff (%)	Gest Len (days)	Mort (%)	Wean Wt Dir (kg)	Wean Calf Quality (%)	Carc Wt (kg)	Carcass Conf Score	Carcass Fat Score	Dry Matter Intake (kg)
5.52	2.43	0.36	24.62	20.93	16.18	1.24	-0.19	0.35

Replacement Milk & Fertility Traits					
Calv Int (days)	Survival (%)	Age 1st calv (days)	Wean Wt Mat (kg)	Calv Diff Mat (%)	Cull Cow (kg)
-4.84	1.47	5.76	10.25	6.51	11.87

BLUP Linear Type

MUSCLE	SKELETAL	DOCILITY	RELIABILITY
100	88		17

Comments
 Wanda isa half sister to twice National Champion Brogeen Victoria. View www.clonguishherd.com

CONDITIONS OF SALE AT AUCTION OF PEDIGREE CATTLE

1. The Highest bidder for each animal shall be the purchaser, and in the event of any dispute, the Auctioneer shall have absolute discretion either to settle the dispute or re-offer the animal immediately.
2. The Auctioneer may, without giving any reason thereof, refuse to accept any bid and may withdraw any animal for which the bidding is considered insufficient.
3. No person may advance less at a bid than a sum to be named from time to time by the auctioneer, and no bidding may be retracted.
4. The vendor may bid for any animal. or animals, and may withdraw any animal, or animals either personally or through the auctioneer, or through any person, as many times as they respectively may think fit.
5. The purchaser of each animal shall shall give their name and address to the auctioneer and pay for all animals purchased in cash immediately at the close of sale . No animal or animals shall be removed from the sale premises until paid for in full and a pass-out slip is obtained from the Auctioneer.
6. Each animal shall be at the purchaser's absolute risk from the fall of the hammer, and shall be removed from the sales premises at the purchaser's expense.
7. The right of property of each animal shall not pass to the purchaser until the full purchase price is paid and the contract of sale is signed by the purchaser.
8. Care has been taken to ensure the accuracy of the catalogue, but no sale shall be invalidated by reason of any defect or faults in any of the animals by reason of the animals being incorrectly described in the catalogue, or by the Auctioneer in the ring, and no compensation whatever shall be paid in respect of any such faults or errors of description.
9. All statements in the catalogue are made by the Auctioneer at the time of sale relating to any veterinary or other tests are to be taken as statements of fact only . No such statements shall guarantee the purchaser of any animal against loss arising from the subsequent reaction of such animal to any test administered after the sale, and the vendors shall not be in any way liable should this occur.
10. Neither the vendors nor the Auctioneers will be responsible for any accident or any injury to persons or property through fire or any other cause whatsoever, nor for any damages by animals prior to, during or after the sale.
11. All animals are sold subject to the Conditions of sale recommended for use at auctions for the sale of pedigree cattle by the Irish Simmental Cattle Society Ltd.
12. The vendor gives no warranty whatever as to the fertility or performance of any bull, and each purchaser is invited to insure against this or any other risks, at his own expense.

CONDITIONS OF SALE AT AUCTION OF PEDIGREE CATTLE

13. Purchasers not complying with the above condition shall be subject, without further notice, to have their animals re-sold either by Public Auction, or by private Treaty, at the discretion of the vendor and the defaulter would be liable for any loss and expense that accrues on the re-sale.
14. The Irish Simmental Cattle Society accepts no responsibility for any errors or inaccuracies that may have occurred in the compilation of this catalogue.

**PEDIGREE CATTLE BREEDERS COUNCIL OF IRELAND
CONDITIONS OF SALE TO APPLY ON ALL SALES OF
PEDIGREE CATTLE.**

1. These Conditions (and where appropriate at auctions, these Conditions together with the General Auction Conditions of Sale), form the basis of the contract between the vendor and the purchaser, and from the contract all conditions and warranties implied under the sale of Goods Act 1893 and the Sale of Goods and Supply of Services Act 1980 or any other statutory enactment or implied by any law or custom or usage are expressly excluded.
2. In the event of a Sale by Auction and there arising conflict between these conditions and the General conditions of the Auction, these conditions shall prevail.
3. All animals are sold as they stand and the purchaser is deemed to have examined each animal and fully satisfied himself about the animal prior to sale.
4. Save as hereinafter provided, no warranty whatever is given as to the performance or fertility of any bull and the purchaser is hereby invited to insure against this or any other risks connected with the bull, at his own expense.
5. The vendor shall and does hereby provide the following guarantee as to the fertility with each bull sold -(a) No guarantee whatever as to fertility is given with any bull under the age of nine months at the date of sale, unless otherwise stated in writing. (b) Subject to the Conditions hereinafter set out, the vendor guarantees that the bull is capable of putting a cow or heifer in a state of pregnancy by natural service within four months of the date of sale or within four months of attaining the age of fourteen months, whichever is the later. This guarantee shall be deemed to be fulfilled whenever one female animal is proved to be in calf by natural service to that bull, subsequent to the sale. A bull shall not be deemed to be incapable of putting a cow or heifer in a state of pregnancy by natural service on a semen test only.
6. The foregoing guarantee is subject to the following conditions:-
 - (a) The bull shall be fairly tried with a view to him putting a cow or heifer in a state of pregnancy by natural service within two months of the date of sale or within two months of attaining the age of fourteen months, whichever is the later. For the purposes of this paragraph, "fairly tried" shall not be deemed to have occurred when less than three female animals in season have been properly presented to or run with the bull.
 - (b) If, upon purchase of the bull, it is found impracticable for the buyer to fairly try the bull within the period stated at paragraph 6(a) above, due to the purchaser's normal calving programme, the vendor must be informed in writing immediately after the sale of the month in which it is proposed to commence using the bull. The vendor shall not unreasonably refuse to extend to the purchaser within seven days of receipt of the said notice in writing from the purchaser.
 - (c) The Purchaser shall give notice in writing by registered post to the vendor of an inability of the bull to put a cow or heifer in a state of pregnancy by natural service or a suspected inability in this respect, not before the expiration of one month nor after the expiration of three months from the date of sale or of the bull attaining fourteen months, or any extension of the commencement of the trial period granted pursuant to paragraph) 6 (b) above or whichever is the later.

**PEDIGREE CATTLE BREEDERS COUNCIL OF IRELAND
CONDITIONS OF SALE TO APPLY ON ALL SALES OF
PEDIGREE CATTLE.**

7. Breeding Guarantee - Females Any cow or heifer realising 500 gns, or more that is stated by vendor as having been served or artificially inseminated not less than 12 weeks before the date of the sale shall be guaranteed in calf to the service date or date of artificial insemination and to the bull stated, unless any alteration to the service particulars is announced from the rostrum or by the vendor at the time the animal is sold. The term " running with the Bull" implies no guarantee of pregnancy unless specifically stated by the vendor at the time of sale, neither shall the provision by the vendor of a certificate of positive pregnancy diagnosis imply any such guarantee this being merely an expression of opinion. Every heifer sold as un-served shall be so guaranteed and all such heifers (unless sold suckling their dams) shall carry a guarantee that they are capable of breeding. Calves sold suckling their dams are given to the purchaser free and no guarantees apply unless specifically stated by the vendor at the time of sale. No claim under these Rules will be effective unless made to the Auctioneers or to the vendor within the following time limits, as applicable, viz:
- (a) In the case of a cow or heifer sold as being in calf which proved NOT to be in calf - within 49 days of the date of sale.
 - (b) In the case of a cow or heifer which, although in calf, does not calve to the stated service or insemination date - within TWO CALENDAR MONTHS of the date that the animal should have calved according to the particulars of service or insemination stated in the catalogue of sale, in all such cases, no claim will be admissible unless there is an interval of more than four weeks between the presumed due date (according to the stated particulars of service or insemination) and the actual calving date. NOTE the average gestation period for cattle is 285 days.
 - (c) In the case of a cow or heifer calves at a later date than the due date the onus of proving the identity of the service bull shall be upon the vendor.
 - (d) In the case of a heifer sold as un-served and which subsequently proved to be in calf - within SIX CALENDAR MONTHS of the date of sale.
 - (e) In the case of a maiden heifer which proves incapable of breeding because of malformation or abnormality of the genital system - not before the animal attains the age of TWENTY SEVEN MONTHS and no claim under this rule be admissible after the animal has attained the age of THIRTY SIX MONTHS. NOTE: Any female (cow or heifer) that has been flushed for embryo transplant will be EXCLUDED from the terms of this guarantee but individual vendors of such animals shall have the option of giving their personal guarantee to be announced at the time of sale. No claims will be admitted under these rules where it can be proved that a cow or heifer is carrying a mummified calf, or has aborted or re-absorbed a foetus and no guarantee is given or implied that any cow or heifer will carry a calf full time. All claims must be submitted to the vendor and the Secretary of the Society and shall be resolved in accordance with the provisions of clause (f) of this agreement.

**PEDIGREE CATTLE BREEDERS COUNCIL OF IRELAND
CONDITIONS OF SALE TO APPLY ON ALL SALES OF
PEDIGREE CATTLE.**

8. This agreement shall be interpreted in accordance with the law of the Republic of Ireland.
9. Commission - 5% payable by the Purchases.

NOTES

NOTES

NOTES