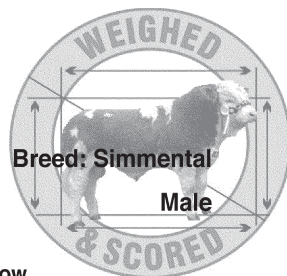


VENDORS

Lot	Vendor
27, 30, 34	Seamus Aherne - Towerhill Cappamore Co Limerick
3, 8, 13, 16, 37, 38, 40, 42	Garreth T Behan - Clonagowan Ballyfin Portlaoise Co Laois
32	Michael Bohan - Rathfee Turloughmore Co Galway
10	Angela Brickley - Coolrain Portlaoise Co. Laois.
33	Thomas Burke - Cregmore Claregalway Co Galway
25	Peter Byrne - The Lane Hanstown Ballinea Mullingar Co Westmeath
26	George Conboy - Gubbs Cloone Carrick-On-Shannon Co Leitrim
15, 21, 31	Francis Conry - Currilstustia Ballinlough Castlereaa Co Roscommon
5	Patrick Creedon - Clogheen Mourneabbey Mallow Co Cork
24	Robert John Dunne - Corporation Lands Belturbet Co Cavan
9, 39	Padraig Gallagher - Stokane Enniscrone Co Sligo
6	John Hannon - Bunsallagh Croghan Tullamore Co Offaly
1, 18	Eric Jackson - Kilmurray Baltinglass Co Wicklow
23, 35, 36	Matthew Mcdonald - Kilcloran Camolin Enniscorthy Co Wexford
11	Joseph Mcgarry - Caldra Newtownforbes Co Longford
2, 17	Benny Mcnamara - Murrough Ballyvaughan Co Clare
4, 12	John & Theresa Murphy - Knockaun Annestown Co Waterford
22	Patrick Murphy - Kilmaine Fortal Birr Co Offaly
14, 19, 20	Peter & Marion O'Connell - Knopogue Mallow Co Cork
29	Thomas O'Malley - Lamagh Newtownforbes Co Longford
28	Vivian Silke - Castlecreevy Corrandulla Co Galway
7	Sandra Stone - Milton Cottage Bandon Co Cork
41	David Wall - Curaheen Hazelhatch Road Newcastle Co Dublin

Lot 1 SLANEYVIEW VINTAGE
IE391049820615 DOB: 11-Nov-2007



Owner: Eric Jackson - Kilmurray Baltinglass Co Wicklow

HILLCREST CHAMPION	GRETNA HOUSE SUPERSONIC	HEYWOOD ESQUIRE
		CHESTON KATIE
	CAMUS SOLITARE	SIEGFRIED
ROBERTSTOWN GRAINNE		STAR FANNY
	HEYWOOD ANDREW	HEYWOOD TALENT
		HEYWOOD HANNADANTE 10TH
	GRAWN ANN	AMERICA PIPPIN IMP '88A
		GRAWN VIOLET

Within Breed Index Data rel Across Breed

★★★★★	Suckler Beef Value	€232	34%	★★★★★
-------	---------------------------	------	-----	-------

★★★★★	<i>Beef Value</i>	€0	27%	★★★★★
★★★★★	Calving Traits	€97	44%	★★★
★★★★★	Weaning Export	€151	41%	★★★★★
★★★★★	Beef Carcass			★★★★★

★	<i>Replacement Value</i>	€85	18%	★★★★★
★★★★★	Milk & Fertility	€454	42%	★★★★★
★★★★★	Calf Quality			★★★★★

★★★★★	<i>Other Key Traits</i>			★★★
	% Difficulty Calving	4.97%	32%	
	Docility	%	%	

Data Rel: 40 - 60% = Ave 20 - 40% = Below Ave <20% = Poor

uro-Star Traits

uro-Star Rating (ICBF, Jan 2009)

Calving Traits			Weaning Export, Beef Carcass & Replacement Calf Traits					
Calv Diff (%)	Gest Len (days)	Mort (%)	Wean Wt Dir (kg)	Wean Calf Quality (%)	Carc Wt (kg)	Carcass Conf Score	Carcass Fat Score	Dry Matter Intake (kg)
4.97	1.75	-0.27	33.77	17.25	35.05	1.56	-0.67	0.31

Replacement Milk & Fertility Traits					
Calv Int (days)	Survival (%)	Age 1st calv (days)	Wean Wt Mat (kg)	Calv Diff Mat (%)	Cull Cow (kg)
-3.35	0.57	2.88	10.53	5.97	26.22

BLUP Linear Type

MUSCLE	SKELETAL	DOCILITY	RELIABILITY
120	114		45

Comments
Red and white bull with exceptional bloodlines with a super temperament

Lot 2 LITTLEROCK VIBRANT BOY

Breed: Simmental

IE131015170054

DOB: 17-Nov-2007

Male

Owner: Benny Mcnamara - Murrough Ballyvaughan Co Clare

HILLCREST NAUGHTY	ROSTEN BARNEY	GRETNA HOUSE SUPERSONIC
		PARKGATE TEMPTRESS
	HILLCREST WINNIE	CAMUS PIONEER
ANATRIM PRIMROSE	ANATRIM MAITH	CAMUS SOLITARE
		CELTIC HIGHFLYER
	ANATRIM BETTY	
	ANATRIM HANDMAID	HOCKENHULL MARVEL
		ANATRIM CEPTA

Within Breed Index Data rel Across Breed

★★	Suckler Beef Value	€162	30%	★★★★
----	---------------------------	------	-----	------

★★	<i>Beef Value</i>			
★★	Calving Traits	-€9	28%	★★★
★★★	Weanling Export	€93	33%	★★★
★★★	Beef Carcass	€109	32%	★★★

	<i>Replacement Value</i>			
★	Milk & Fertility	€70	18%	★★★★★
★★★	Calf Quality	€308	32%	★★★

★★	<i>Other Key Traits</i>			
	% Difficulty Calving	6.38%	31%	★★
	Docility	%	%	

Data Rel: 40 - 60% = Ave 20 - 40% = Below Ave <20% = Poor

uro-Star Traits

uro-Star Rating (ICBF, Jan 2009)

Calving Traits			Weanling Export, Beef Carcass & Replacement Calf Traits					
Calv Diff (%)	Gest Len (days)	Mort (%)	Wean Wt Dir (kg)	Wean Calf Quality (%)	Carc Wt (kg)	Carcass Conf Score	Carcass Fat Score	Dry Matter Intake (kg)
6.38	2.93	0.15	28.41	18.8	26.24	1.38	-0.22	0.47

Replacement Milk & Fertility Traits					
Calv Int (days)	Survival (%)	Age 1st calv (days)	Wean Wt Mat (kg)	Calv Diff Mat (%)	Cull Cow (kg)
-2.2	0.05	-17.5	7.12	6.98	16.9

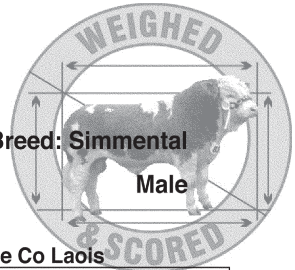
BLUP Linear Type

MUSCLE	SKELETAL	DOCILITY	RELIABILITY
110	106		32

Comments
Red and white easily fleshed bull

Lot 3 CLONAGH VOOM KLASSIK
IE221283350623 DOB: 16-Dec-2007

Breed: Simmental
Male



Owner: Garreth T Behan - Clonagowan Ballyfin Portlaoise Co Laois

STARLINE KLASSIK	WROXALL FIELD MARSHAL	0000 STRATHISLA CAPRICORN
		WROXALL ALTISSIMO VIOLIN
	MILNAFUA GINA	SOLITUDE CHALLENGER
CLONAGH MADELINE	KILFRUSH GERALDO	MILNAFUA DREAMER
		BRINKTON BRILLIANT
		CORAH BRIGETTA
	CLONAGH EDEL	HILLCREST BUTCHER
		CLONASLEE WANDA

Within Breed Index Data rel Across Breed

★	Suckler Beef Value	€146	28%	★★★★
---	---------------------------	------	-----	------

★★★★	<i>Beef Value</i>			
★★★	Calving Traits	-€5	25%	★★★★
★	Weanling Export	€82	38%	★★
★	Beef Carcass	€78	32%	★★

★★★★★	<i>Replacement Value</i>			
★★★★★	Milk & Fertility	€142	7%	★★★★★
★	Calf Quality	€245	36%	★★

★★★★★	<i>Other Key Traits</i>			
★★★★★	% Difficulty Calving	4.52%	30%	★★★★
	Docility	%	%	

Data Rel: 40 - 60% = Ave 20 - 40% = Below Ave <20% = Poor

uro-Star Traits

uro-Star Rating (ICBF, Jan 2009)

Calving Traits			Weanling Export, Beef Carcass & Replacement Calf Traits					
Calv Diff (%)	Gest Len (days)	Mort (%)	Wean Wt Dir (kg)	Wean Calf Quality (%)	Carc Wt (kg)	Carcass Conf Score	Carcass Fat Score	Dry Matter Intake (kg)
4.52	3.07	0.2	28.56	14.58	15.66	0.64	-0.12	0.37

Replacement Milk & Fertility Traits					
Calv Int (days)	Survival (%)	Age 1st calv (days)	Wean Wt Mat (kg)	Calv Diff Mat (%)	Cull Cow (kg)
-3.18	1.07	-5.07	12.08	6.58	10.85

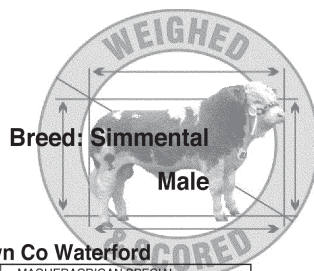
BLUP Linear Type

MUSCLE	SKELETAL	DOCILITY	RELIABILITY
88	109		38

Comments

1st Klassik bull for sale in ROI. Excellent bull out of top cow family in the herd. G.Dam Edel her progeny has produced numerous Premier Sale Champions, Res.Champion. Outwintered. Herd negative vro IBR, BVD, Johnes.

Lot 4 KNOCKANE VONA
IE351079261263 DOB: 17-Dec-2007



Owner: John & Theresa Murphy - Knockaun Annestown Co Waterford

CURAHEEN SITTINGBULL	HILLCREST BUTCHER	MAGHERACRIGAN SPECIAL
		CAMUS SOLITARE
	CURAHEEN GIRL	SACOMBE EDGAR
		BALLYWALL COFFEY
GALTEEVIEW NOELLE	MOUNT ROYAL WESTERN	MAGHERACRIGAN SPECIAL
		GRANAGH PHILO
	CARRUERAGH AIDEEN	HERRSCHER
		CARRUERAGH SIBEAL

Within Breed Index Data rel Across Breed

★★★★★	Suckler Beef Value	€225	30%	★★★★★
-------	--------------------	------	-----	-------

★★	<i>Beef Value</i>			
★★	Calving Traits	-€8	24%	★★★
★★★★★	Weanling Export	€128	40%	★★★★★
★★★★★	Beef Carcass	€139	36%	★★★★★

★★★	<i>Replacement Value</i>			
★★★	Milk & Fertility	€120	10%	★★★★★
★★★★★	Calf Quality	€428	37%	★★★★★

★★	<i>Other Traits</i>			
	% Difficulty Calving	6.23%	37%	★★
	Docility	%	%	

Data Rel: 40 - 60% = Ave 20 - 40% = Below Ave <20% = Poor

uro-Star Traits

uro-Star Rating (ICBF, Jan 2009)

<i>Calving Traits</i>			<i>Weanling Export, Beef Carcass & Replacement Calf Traits</i>					
Calv Diff (%)	Gest Len (days)	Mort (%)	Wean Wt Dir (kg)	Wean Calf Quality (%)	Carc Wt (kg)	Carcass Conf Score	Carcass Fat Score	Dry Matter Intake (kg)
6.23	3.03	0.12	46.56	21.73	29.52	1.32	-0.49	0.67

<i>Replacement Milk & Fertility Traits</i>					
Calv Int (days)	Survival (%)	Age 1st calv (days)	Wean Wt Mat (kg)	Calv Diff Mat (%)	Cull Cow (kg)
-5.87	1.67	5.91	11.16	6.46	26.33

BLUP Linear Type

MUSCLE	SKELETAL	DOCILITY	RELIABILITY
111	124		40

Comments

Lot 5 WELLFIELD WARRIOR
IE151441371044 DOB: 05-Jan-2008

Breed: Simmental
Male

Owner: Patrick Creedon - Clogheen Mourneabbey Mallow Co Cork

RACEVIEW KING	RACEVIEW GLADIATOR	BRINKTON BRILLIANT
		RACEVIEW BEAUTY
	KILMICHAEL DIAMOND	AWL MANITOBA SPARTAN
WELLFIELD NELLIE	BALLYDUFF JEWELLER	KILMICHAEL SULTANA
		SACOMBE WISHFULL THINKING
		BALLYDUFF WENDY
	BALLYARRA BELINDA	ENFIELD BENZ
		CHERRYFIELD VANESSA

Within Breed Index Data rel Across Breed

★★★★★	Suckler Beef Value	€207	31%	★★★★★
-------	---------------------------	------	-----	-------

★	<i>Beef Value</i>			
★	Calving Traits	-€16	32%	★
★★★★★	Weanling Export	€115	30%	★★★★★
★★★★★	Beef Carcass	€137	31%	★★★★★

★★★★★	<i>Replacement Value</i>			
★★★★★	Milk & Fertility	€130	19%	★★★★★
★★★★★	Calf Quality	€377	31%	★★★★★

★	<i>Other Key Traits</i>			
	% Difficulty Calving	8.77%	41%	★
	Docility	%	%	

Data Rel: 40 - 60% = Ave 20 - 40% = Below Ave <20% = Poor

uro-Star Traits

uro-Star Rating (ICBF, Jan 2009)

Calving Traits			Weanling Export, Beef Carcass & Replacement Calf Traits					
Calv Diff (%)	Gest Len (days)	Mort (%)	Wean Wt Dir (kg)	Wean Calf Quality (%)	Carc Wt (kg)	Carcass Conf Score	Carcass Fat Score	Dry Matter Intake (kg)
8.77	2.8	0.46	39.73	20.83	27.31	1.29	-0.51	0.29

Replacement Milk & Fertility Traits					
Calv Int (days)	Survival (%)	Age 1st calv (days)	Wean Wt Mat (kg)	Calv Diff Mat (%)	Cull Cow (kg)
-3.06	0.35	-3.39	11.01	4.16	16.15

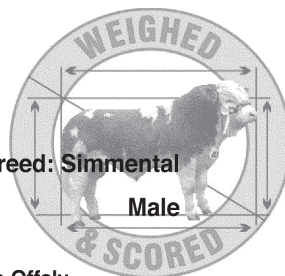
BLUP Linear Type

MUSCLE	SKELETAL	DOCILITY	RELIABILITY
122	113		31

Comments
Has exceptional growth rate and docility - a true King Son

Lot 6 BUNSALLAGH WINSTON
IE301010050066 DOB: 11-Jan-2008

Breed: Simmental
Male



Owner: John Hannon - Bunsallagh Croghan Tullamore Co Offaly

HILLCREST KING	HILLCREST CHAMPION	GRETNA HOUSE SUPERSONIC
		CAMUS SOLITARE
	BALLYBANE RUTH	BALLYBANE LAD
CASTLELYONS PANSY	BALLYDUFF JEWELLER	BALLYBANE FLOWER
		SACOMBE WISHFULL THINKING
		BALLYDUFF WENDY
	CASTLELYONS JEWEL	MOUNT ROYAL WESTERN
		BALLYARRA EILEEN

Within Breed Index Data rel Across Breed

★★★	Suckler Beef Value	€183	34%	★★★★★
-----	---------------------------	------	-----	-------

	<i>Beef Value</i>			
★★★	Calving Traits	-€7	33%	★★★
★★★	Weanling Export	€92	35%	★★★
★★★★	Beef Carcass	€123	35%	★★★

	<i>Replacement Value</i>			
★	Milk & Fertility	€74	24%	★★★★
★★★★	Calf Quality	€354	35%	★★★★

	<i>Other Key Traits</i>			
★★	% Difficulty Calving	6.66%	34%	★★
	Docility	%	%	

Data Rel: 40 - 60% = Ave 20 - 40% = Below Ave <20% = Poor

uro-Star Traits

uro-Star Rating (ICBF, Jan 2009)

Calving Traits			Weanling Export, Beef Carcass & Replacement Calf Traits					
Calv Diff (%)	Gest Len (days)	Mort (%)	Wean Wt Dir (kg)	Wean Calf Quality (%)	Carc Wt (kg)	Carcass Conf Score	Carcass Fat Score	Dry Matter Intake (kg)
6.66	2.44	-0.16	30.68	17.29	27.33	1.37	-0.28	0.29

Replacement Milk & Fertility Traits					
Calv Int (days)	Survival (%)	Age 1st calv (days)	Wean Wt Mat (kg)	Calv Diff Mat (%)	Cull Cow (kg)
-0.99	-0.13	-16.26	9.59	7.49	17.84

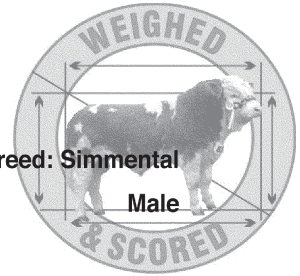
BLUP Linear Type

MUSCLE	SKELETAL	DOCILITY	RELIABILITY
117	101		41

Comments

Lot 7 MILTON WARRIOR (ET)
 IE141522470268 DOB: 21-Jan-2008

Breed: Simmental
 Male



Owner: Sandra Stone - Milton Cottage Bandon Co Cork

SALISBURY CHALLENGER	AGARDSLEY ANSELL	STERLING RAPIER
		AGARDSLEY SOPHIA BERNADE
	YANLEY GLENDA 6TH	WELLHOUSE KESTREL
MILTON HILARY		YANLEY GLENDA
	BRINKTON BRILLIANT	BRINKTON SOVREIGN
		BRINKTON SANDRA
	RACEVIEW CHRISTINA	MAGHERACRIGAN SPECIAL
		DOVEA LYNNE

Within Breed		Index	Data rel	Across Breed
★★★★★	Suckler Beef Value	€195	27%	★★★★★
	<i>Beef Value</i>			
★★★★★	Calving Traits	-€2	22%	★★★★★
★★★★★	Weanling Export	€109	30%	★★★★★
★★★	Beef Carcass	€104	33%	★★★
	<i>Replacement Value</i>			
★★★★★	Milk & Fertility	€158	13%	★★★★★
★★★★	Calf Quality	€344	32%	★★★★
	<i>Other Key Traits</i>			
★★★★★	% Difficulty Calving	4.82%	29%	★★★
	Docility	%	%	

Data Rel: 40 - 60% = Ave 20 - 40% = Below Ave <20% = Poor

uro-Star Traits

uro-Star Rating (ICBF, Jan 2009)

<i>Calving Traits</i>			<i>Weanling Export, Beef Carcass & Replacement Calf Traits</i>					
Calv Diff (%)	Gest Len (days)	Mort (%)	Wean Wt Dir (kg)	Wean Calf Quality (%)	Carc Wt (kg)	Carcass Conf Score	Carcass Fat Score	Dry Matter Intake (kg)
4.82	1.77	0.08	37.76	19.53	18.59	1.2	-0.41	0.47

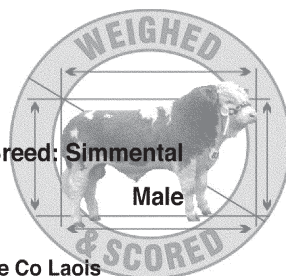
<i>Replacement Milk & Fertility Traits</i>					
Calv Int (days)	Survival (%)	Age 1st calv (days)	Wean Wt Mat (kg)	Calv Diff Mat (%)	Cull Cow (kg)
-4.35	1.22	5.62	15.96	7.16	17.71

<i>BLUP Linear Type</i>			
MUSCLE	SKELETAL	DOCILITY	RELIABILITY
124	101		43

Comments

Lot 8 CLONAGH WILLY-TIFF
 IE221283320645 DOB: 01-Feb-2008

Breed: Simmental
 Male



Owner: Garreth T Behan - Clonagowan Ballyfin Portlaoise Co Laois

MILTON LORD-TIFFANY ET	CARKERN TITAN	TEVIOT PANTHER
		CARKERN NATASHA
	SEABANK TIFFANY	HERRSCHER
		STAR POLLY
CLONAGH HENRIETTA	BALLYBANE EDWARD	HILLCREST BUTCHER
		BALLYBANE VISION
	BIA695755	

Within Breed Index Data rel Across Breed

★★★	Suckler Beef Value	€168	35%	★★★★★
-----	--------------------	------	-----	-------

	<i>Beef Value</i>			
★	Calving Traits	-€10	29%	★★★
★★★★★	Weanling Export	€103	46%	★★★★★
★★	Beef Carcass	€97	42%	★★

	<i>Replacement Value</i>			
★★★★★	Milk & Fertility	€145	18%	★★★★★
★★	Calf Quality	€293	43%	★★★

	<i>Other Key Traits</i>			
★★	% Difficulty Calving	6.43%	34%	★★
	Dociity	%	%	

Data Rel: 40 - 60% = Ave 20 - 40% = Below Ave <20% = Poor

uro-Star Traits

uro-Star Rating (ICBF, Jan 2009)

Calving Traits			Weanling Export, Beef Carcass & Replacement Calf Traits					
Calv Diff (%)	Gest Len (days)	Mort (%)	Wean Wt Dir (kg)	Wean Calf Quality (%)	Carc Wt (kg)	Carcass Conf Score	Carcass Fat Score	Dry Matter Intake (kg)
6.43	1.92	0.9	37.44	17.51	16.72	0.87	-0.23	0.39

Replacement Milk & Fertility Traits					
Calv Int (days)	Survival (%)	Age 1st calv (days)	Wean Wt Mat (kg)	Calv Diff Mat (%)	Cull Cow (kg)
-6.11	2.05	0.32	10.57	6.85	15.97

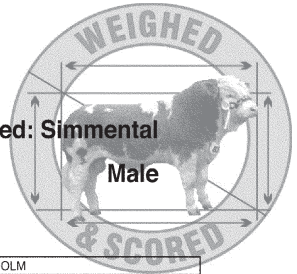
BLUP Linear Type

MUSCLE	SKELETAL	DOCILITY	RELIABILITY
97	103		47

Comments

Outwintered. Herd negative vro
 IBR, BVD, Johnes.
www.clonaghherds.com

Lot 9 BEECHHILL WISHFULLTHINKING Breed: Simmental
 IE321447720229 DOB: 02-Feb-2008 Male



Owner: Padraig Gallagher - Stokane Enniscrone Co Sligo

EXODUS	EISENHERZ	ECKHOLM
		768
	ROBE 93	EMU (PP)
		ROMY
BALLINGAR PUMPKIN	MARBELHILL LIAM	RICHARDSTOWN JUMBO
		LAKEVIEW EMERALD
	BALLINGAR KAROLINE	INNERWICK CHIEFTAIN
		LOWLAND CLODAGH

Within Breed Index Data rel Across Breed

★★	Suckler Beef Value	€163	14%	★★★★
----	--------------------	------	-----	------

	<i>Beef Value</i>			
★★★	Calving Traits	-€4	18%	★★★★★
★★	Weanling Export	€89	12%	★★★
★★	Beef Carcass	€95	11%	★★

	<i>Replacement Value</i>			
★★★	Milk & Fertility	€120	7%	★★★★★
★★	Calf Quality	€287	12%	★★★

	<i>Other Key Traits</i>			
★★★★★	% Difficulty Calving	4.94%	31%	★★★
	Docility	%	%	

Data Rel: 40 - 60% = Ave 20 - 40% = Below Ave <20% = Poor

uro-Star Traits uro-Star Rating (ICBF, Jan 2009)

Calving Traits			Weanling Export, Beef Carcass & Replacement Calf Traits					
Calv Diff (%)	Gest Len (days)	Mort (%)	Wean Wt Dir (kg)	Wean Calf Quality (%)	Carc Wt (kg)	Carcass Conf Score	Carcass Fat Score	Dry Matter Intake (kg)
4.94	2.16	0.33	27.46	18.01	20.72	1.24	-0.14	0.39

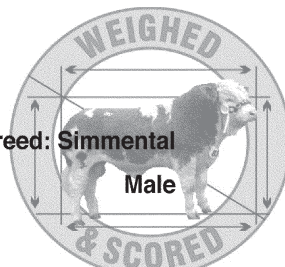
Replacement Milk & Fertility Traits					
Calv Int (days)	Survival (%)	Age 1st calv (days)	Wean Wt Mat (kg)	Calv Diff Mat (%)	Cull Cow (kg)
-0.82	0.39	-8.77	12.36	6.6	11.06

Comments
 Tully tested. Finished test with A.D.G. of 2.1kgs. Finished in the top 6 overall in Tully for feed conversion efficiency 6.4 - A quality red bull with outcross pedigree

BLUP Linear Type			
MUSCLE	SKELETAL	DOCILITY	RELIABILITY
102	97		36

Lot 10 **CELTIC WIFI**
 IE221152630402 **DOB: 03-Feb-2008**

Breed: Simmental
Male



Owner: Angela Brickley - Coolrain Portlaoise Co. Laois.

CURAHEEN TYSON (ET)	HILLCREST CHAMPION	GRETNA HOUSE SUPERSONIC
		CAMUS SOLITAIRE
	RACEVIEW MERLE-BEAUTY	RACEVIEW KING
		KILMICHAEL BEAUTY
CELTIC KESTREL	CELTIC GOLDMINE	ANATRIM DIGGER
		ANATRIM DELIGHT
	ANATRIM ELLY	EUREKA IMP '90A
		STAR BETTINA

Within Breed Index Data rel Across Breed

★★★★★	Suckler Beef Value	€222	27%	★★★★★
-------	---------------------------	-------------	------------	-------

★★★	<i>Beef Value</i>			
★★★★★	Calving Traits	-€6	19%	★★★★★
★★★★★	Weanling Export	€129	41%	★★★★★
★★★★★	Beef Carcass	€138	35%	★★★★★

★★	<i>Replacement Value</i>			
★★★★★	Milk & Fertility	€102	10%	★★★★★
★★★★★	Calf Quality	€427	37%	★★★★★

★★★	<i>Other Key Traits</i>			
★★★★★	% Difficulty Calving	5.84%	32%	★★★
	Docility	%	%	

Data Rel: 40 - 60% = Ave 20 - 40% = Below Ave <20% = Poor

uro-Star Traits

uro-Star Rating (ICBF, Jan 2009)

<i>Calving Traits</i>			<i>Weanling Export, Beef Carcass & Replacement Calf Traits</i>					
Calv Diff (%)	Gest Len (days)	Mort (%)	Wean Wt Dir (kg)	Wean Calf Quality (%)	Carc Wt (kg)	Carcass Conf Score	Carcass Fat Score	Dry Matter Intake (kg)
5.84	2.27	0.14	43.76	23.72	25.49	1.51	-0.57	0.4

<i>Replacement Milk & Fertility Traits</i>					
Calv Int (days)	Survival (%)	Age 1st calv (days)	Wean Wt Mat (kg)	Calv Diff Mat (%)	Cull Cow (kg)
-3.39	1.17	-6.22	9.22	6.01	22.2

BLUP Linear Type

MUSCLE	SKELETAL	DOCILITY	RELIABILITY
122	91		38

Comments

Lot 11 CLONGUISH WARRIOR
IE251137550268 DOB: 04-Feb-2008

Breed: Simmental
Male

Owner: Joseph Mcgarry - Caldra Newtownforbes Co Longford

DIRNANEAN JACOB	ARKMILL FRANKLYN	RAVENSWORTH CAREFREE
		CONGEITH ANNABEL
	DIRNANEAN BOUNTY	THORNYHILL VIKING
		MONCUR TARKA
HILLCREST NUALA ET	ROSTEN BARNEY	GRETNA HOUSE SUPERSONIC
		PARKGATE TEMPTRESS
	BALLYBANE TERESA	BALLYBANE LAD
		INCHANAPPA KATE

Within Breed Index Data rel Across Breed

★★★★★	Suckler Beef Value	€199	30%	★★★★★★
-------	---------------------------	------	-----	--------

★	<i>Beef Value</i>			
★	Calving Traits	-€11	33%	★★
★★★	Weanling Export	€97	27%	★★★
★★★★★	Beef Carcass	€127	28%	★★★

	<i>Replacement Value</i>			
★★★★★	Milk & Fertility	€146	14%	★★★★★★
★★★★★	Calf Quality	€353	29%	★★★★★

★	<i>Other Key Traits</i>			
	% Difficulty Calving	7.49%	39%	★★
	Docility	%	%	

Data Rel: 40 - 60% = Ave 20 - 40% = Below Ave <20% = Poor

uro-Star Traits

uro-Star Rating (ICBF, Jan 2009)

Calving Traits			Weanling Export, Beef Carcass & Replacement Calf Traits					
Calv Diff (%)	Gest Len (days)	Mort (%)	Wean Wt Dir (kg)	Wean Calf Quality (%)	Carc Wt (kg)	Carcass Conf Score	Carcass Fat Score	Dry Matter Intake (kg)
7.49	3.27	-0.01	33.61	17.4	31.66	1.5	-0.12	0.61

Replacement Milk & Fertility Traits					
Calv Int (days)	Survival (%)	Age 1st calv (days)	Wean Wt Mat (kg)	Calv Diff Mat (%)	Cull Cow (kg)
-5.05	1.64	-8.69	10.84	6.11	19.47

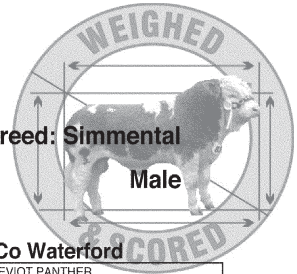
BLUP Linear Type

MUSCLE	SKELETAL	DOCILITY	RELIABILITY
110	114		31

Comments

Lot 12 **KNOCKANE WALTER**
 IE351079291282 **DOB: 07-Feb-2008**

Breed: Simmental
Male



Owner: John & Theresa Murphy - Knockaun Annestown Co Waterford

MILTON LORD-TIFFANY ET	CARNKERN TITAN	TEVIOT PANTHER
		CARNKERN NATASHA
	SEABANK TIFFANY	HERRSCHER
		STAR POLLY
BALLYDUFF MARTINA	BALLYDUFF JEWELLER	SACOMBE WISHFULL THINKING
		BALLYDUFF WENDY
	BALLYDUFF GEMMA	KNOCKANROE CARTON
		BALLYDUFF BESS

Within Breed Index Data rel Across Breed

★★★★★	Suckler Beef Value	€224	38%	★★★★★
-------	---------------------------	------	-----	-------

★	<i>Beef Value</i>			
★★★★★	Calving Traits	-€11	33%	★★★
★★★★★	Weanling Export	€116	46%	★★★★★
★★★★★	Beef Carcass	€142	43%	★★★★★

★★★★★	<i>Replacement Value</i>			
★★★★★	Milk & Fertility	€126	18%	★★★★★
★★★★★	Calf Quality	€424	44%	★★★★★

★	<i>Other Key Traits</i>			
	% Difficulty Calving	7.25%	43%	★★
	Docility	%	%	

Data Rel: 40 - 60% = Ave 20 - 40% = Below Ave <20% = Poor

uro-Star Traits

uro-Star Rating (ICBF, Jan 2009)

<i>Calving Traits</i>			<i>Weanling Export, Beef Carcass & Replacement Calf Traits</i>					
Calv Diff (%)	Gest Len (days)	Mort (%)	Wean Wt Dir (kg)	Wean Calf Quality (%)	Carc Wt (kg)	Carcass Conf Score	Carcass Fat Score	Dry Matter Intake (kg)
7.25	1.66	0.67	45.92	17.55	30.86	1.16	-0.29	0.59

<i>Replacement Milk & Fertility Traits</i>					
Calv Int (days)	Survival (%)	Age 1st calv (days)	Wean Wt Mat (kg)	Calv Diff Mat (%)	Cull Cow (kg)
-4.25	1.32	-5.98	11.2	6.64	21.23

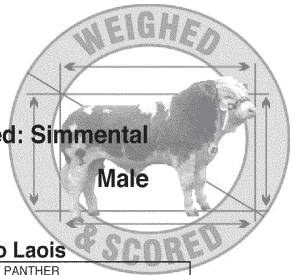
BLUP Linear Type

MUSCLE	SKELETAL	DOCILITY	RELIABILITY
112	123		45

Comments

Lot 13 CLONAGH WINNER
IE221283360649 DOB: 08-Feb-2008

Breed: Simmental
Male



Owner: Garreth T Behan - Clonagowan Ballyfin Portlaoise Co Laois

MILTON LORD-TIFFANY ET	CARNKERN TITAN	TEVIOT PANTHER
		CARNKERN NATASHA
	SEABANK TIFFANY	HERRSCHER
		STAR POLLY
CLONAGH KETTY	BALLYBANE EDWARD	HILLCREST BUTCHER
		BALLYBANE VISION
	CLONAGH FREDA	KNOCKTORAN BELVEDERE
		CLONAGH BRENDA

Within Breed Index Data rel Across Breed

★★★★★	Suckler Beef Value	€208	36%	★★★★★
-------	---------------------------	------	-----	-------

★	<i>Beef Value</i>			
★★★★★	Calving Traits	-€14	31%	★★
★★★★★	Weanling Export	€126	45%	★★★★★
★★★★★	Beef Carcass	€130	41%	★★★★★

★★★★★	<i>Replacement Value</i>			
★★★★★	Milk & Fertility	€143	18%	★★★★★
★★★★★	Calf Quality	€376	42%	★★★★★

★	<i>Other Key Traits</i>			
	% Difficulty Calving	7.73%	41%	★★
	Docility	%	%	

Data Rel: 40 - 60% = Ave 20 - 40% = Below Ave <20% = Poor

uro-Star Traits

uro-Star Rating (ICBF, Jan 2009)

Calving Traits			Weanling Export, Beef Carcass & Replacement Calf Traits					
Calv Diff (%)	Gest Len (days)	Mort (%)	Wean Wt Dir (kg)	Wean Calf Quality (%)	Carc Wt (kg)	Carcass Conf Score	Carcass Fat Score	Dry Matter Intake (kg)
7.73	2.02	0.95	43.05	22.97	25.46	1.44	-0.44	0.52

Replacement Milk & Fertility Traits					
Calv Int (days)	Survival (%)	Age 1st calv (days)	Wean Wt Mat (kg)	Calv Diff Mat (%)	Cull Cow (kg)
-5.2	1.87	-4.06	10.45	6.03	19.03

BLUP Linear Type

MUSCLE	SKELETAL	DOCILITY	RELIABILITY
122	92		46

Comments
. Herd negative vro IBR, BVD, Johnes. www.clonaghherds.com

Lot 14 RACEVIEW WOODY

Breed: Simmental

IE151420960398

DOB: 08-Feb-2008

Male

Owner: Peter & Marion O'Connell - Knopogue Mallow Co Cork

RACEVIEW KING	RACEVIEW GLADIATOR	BRINKTON BRILLIANT
		RACEVIEW BEAUTY
	KILMICHAEL DIAMOND	AWL MANITOBA SPARTAN
		KILMICHAEL SULTANA
HINDU		
DERMODY RACHEL	HERKULES	BLEAMI
		BRINKTON SOVREIGN
	MILTON GRACE	CASTLELOMA BAMBI

Within Breed Index Data rel Across Breed

★★★★★	Suckler Beef Value	€210	33%	★★★★★
-------	---------------------------	------	-----	-------

★	<i>Beef Value</i>			
★★★★★	Calving Traits	-€15	31%	★★
★★★★★	Weanling Export	€110	41%	★★★★★
★★★★★	Beef Carcass	€135	36%	★★★★★

★★★★★	<i>Replacement Value</i>			
★★★★★	Milk & Fertility	€159	16%	★★★★★
★★★★★	Calf Quality	€369	39%	★★★★★

★	<i>Other Key Traits</i>			
	% Difficulty Calving	8.21%	42%	★
	Docility	%	%	

Data Rel: 40 - 60% = Ave 20 - 40% = Below Ave <20% = Poor

uro-Star Traits

uro-Star Rating (ICBF, Jan 2009)

Calving Traits			Weanling Export, Beef Carcass & Replacement Calf Traits					
Calv Diff (%)	Gest Len (days)	Mort (%)	Wean Wt Dir (kg)	Wean Calf Quality (%)	Carc Wt (kg)	Carcass Conf Score	Carcass Fat Score	Dry Matter Intake (kg)
8.21	2.44	0.69	37.03	20.58	27.38	1.34	-0.63	0.27

Replacement Milk & Fertility Traits					
Calv Int (days)	Survival (%)	Age 1st calv (days)	Wean Wt Mat (kg)	Calv Diff Mat (%)	Cull Cow (kg)
-3.13	1.22	-8.24	12.69	4.36	20.27

BLUP Linear Type

MUSCLE	SKELETAL	DOCILITY	RELIABILITY
115	112		33

Comments

Lot 15 KILTULLAGH WALTER

Breed: Simmental

IE311699210511 DOB: 10-Feb-2008

Male

Owner: Francis Conry - Currislustia Ballinlough Castlereagh Co Roscommon

MARBELHILL LIAM	RICHARDSTOWN JUMBO	HAMLET
		IRLA IMP: 75A
	LAKEVIEW EMERALD	FREIGHDUFF BRENDAN
		LAKEVIEW VIOLET
ARKMILL FRANKLYN		
CARREAGH REBECCA	DIRNANEAN JACOB	DIRNANEAN BOUNTY
		CELTIC HIGHFLYER
	ANATRIM LAURINA	ANATRIM COBA

Within Breed Index Data rel Across Breed

★★★★★	Suckler Beef Value	€208	34%	★★★★★
-------	---------------------------	------	-----	-------

★★	<i>Beef Value</i>			
★★	Calving Traits	-€7	38%	★★★
★★★★★	Weanling Export	€100	31%	★★★★★
★★★★★	Beef Carcass	€129	32%	★★★★★

★★★★★	<i>Replacement Value</i>			
★★★★★	Milk & Fertility	€138	21%	★★★★★
★★★★★	Calf Quality	€377	32%	★★★★★

★★★★★	<i>Other Key Traits</i>			
★★★★★	% Difficulty Calving	4.66%	41%	★★★
	Docility	%	%	

Data Rel: 40 - 60% = Ave 20 - 40% = Below Ave <20% = Poor

uro-Star Traits

uro-Star Rating (ICBF, Jan 2009)

Calving Traits			Weanling Export, Beef Carcass & Replacement Calf Traits						
Calv Diff (%)	Gest Len (days)	Mort (%)	Wean Wt Dir (kg)	Wean Calf Quality (%)	Carc Wt (kg)	Carcass Conf Score	Carcass Fat Score	Dry Matter Intake (kg)	
4.66	3.36	0.43	33.75	18.29	31.96	1.7	-0.18	0.63	

Replacement Milk & Fertility Traits					
Calv Int (days)	Survival (%)	Age 1st calv (days)	Wean Wt Mat (kg)	Calv Diff Mat (%)	Cull Cow (kg)
-2.21	1.07	-17.64	12.98	7.37	18.95

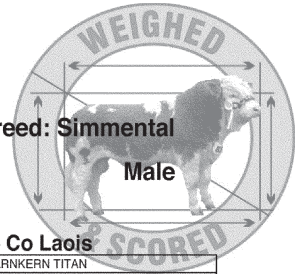
BLUP Linear Type

MUSCLE	SKELETAL	DOCILITY	RELIABILITY
121	109		32

Comments
Great quality well muscled red and white bull

Lot 16 CLONAGH W-MUSCLE BOY
IE221283390651 DOB: 16-Feb-2008

Breed: Simmental
Male



Owner: Garreth T Behan - Clonagowan Ballyfin Portlaoise Co Laois

DERROUGH SIMON	CLEENAGH FLASHER	CARNKERN TITAN
		CLEENAGH KAY
	DERROUGH DANIELLE	GRETNA HOUSE SUPERSONIC
		LAKEVIEW WANDA
CLONAGH GRAINNE	GRETNA HOUSE SUPERSONIC	HEYWOOD ESQUIRE
		CHESTON KATIE
	CLONAGH DORA	CAMUS VIBRANT
		HOLLOWFIELD ALBERTA

Within Breed Index Data rel Across Breed

★★★	Suckler Beef Value	€183	29%	★★★★★
-----	---------------------------	------	-----	-------

★★★★★	<i>Beef Value</i>			
★★★★★	Calving Traits	€1	20%	★★★★★
★★	Weanling Export	€89	42%	★★★
★★	Beef Carcass	€97	37%	★★

★★★★★	<i>Replacement Value</i>			
★★★★★	Milk & Fertility	€156	9%	★★★★★
★★★	Calf Quality	€317	39%	★★★

★★★★★	<i>Other Key Traits</i>			
★★★★★	% Difficulty Calving	4.21%	30%	★★★★★
	Docility	%	%	

Data Rel: 40 - 60% = Ave 20 - 40% = Below Ave <20% = Poor

uro-Star Traits

uro-Star Rating (ICBF, Jan 2009)

Calving Traits			Weanling Export, Beef Carcass & Replacement Calf Traits					
Calv Diff (%)	Gest Len (days)	Mort (%)	Wean Wt Dir (kg)	Wean Calf Quality (%)	Carc Wt (kg)	Carcass Conf Score	Carcass Fat Score	Dry Matter Intake (kg)
4.21	1.79	-0.12	30.08	16.59	20.26	1.26	-0.28	0.45

Replacement Milk & Fertility Traits					
Calv Int (days)	Survival (%)	Age 1st calv (days)	Wean Wt Mat (kg)	Calv Diff Mat (%)	Cull Cow (kg)
-4.4	1.9	-5.84	12.81	7.41	15.53

BLUP Linear Type

MUSCLE	SKELETAL	DOCILITY	RELIABILITY
111	88		43

Comments

Outwintered. Herd negative vro
IBR, BVD, Johnes.
www.clonaghherds.com

Lot 17 LITTLE ROCK WAZZA
 IE131015110057 DOB: 24-Feb-2008

Breed: Simmental
 Male

Owner: Benny Mcnamara - Murrough Ballyvaughan Co Clare

HILLCREST NAUGHTY	ROSTEN BARNEY	GRETNA HOUSE SUPERSONIC
		PARKGATE TEMPRESS
	HILLCREST WINNIE	CAMUS PIONEER
		CAMUS SOLITAIRE
LITTLE ROCK STAR SUPREME	MOUNT ROYAL WESTERN	MAGHERACRIGAN SPECIAL
		GRANAGH PHILO
	CLONGUISH MONICA	FREIGHDUFF BRENDAN
		CLONGUISH JOAN

Within Breed Index Data rel Across Breed

★	Suckler Beef Value	€144	31%	★★★★★
---	---------------------------	------	-----	-------

★	<i>Beef Value</i>			
★	Calving Traits	-€15	31%	★★
★★	Weanling Export	€88	33%	★★★
★★	Beef Carcass	€102	33%	★★

	<i>Replacement Value</i>			
★	Milk & Fertility	€85	22%	★★★★★
★★	Calf Quality	€260	32%	★★

	<i>Other Key Traits</i>			
★	% Difficulty Calving	7.7%	33%	★★
	Docility	%	%	

Data Rel: 40 - 60% = Ave 20 - 40% = Below Ave <20% = Poor

uro-Star Traits

uro-Star Rating (ICBF, Jan 2009)

Calving Traits			Weanling Export, Beef Carcass & Replacement Calf Traits					
Calv Diff (%)	Gest Len (days)	Mort (%)	Wean Wt Dir (kg)	Wean Calf Quality (%)	Carc Wt (kg)	Carcass Conf Score	Carcass Fat Score	Dry Matter Intake (kg)
7.7	3.93	0.33	25.96	18.49	24.1	1.43	-0.23	0.43

Replacement Milk & Fertility Traits					
Calv Int (days)	Survival (%)	Age 1st calv (days)	Wean Wt Mat (kg)	Calv Diff Mat (%)	Cull Cow (kg)
-2.9	0.4	-11.46	8.07	7.12	14.55

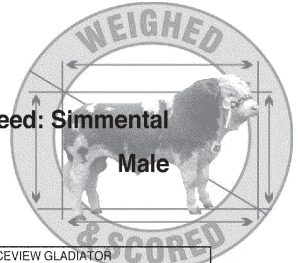
BLUP Linear Type

MUSCLE	SKELETAL	DOCILITY	RELIABILITY
109	108		30

Comments
Heifers calf with lots of milk

Lot 18 SLANEYVIEW WESLEY
 IE391049880629 DOB: 06-Mar-2008

Breed: Simmental
 Male



Owner: Eric Jackson - Kilmurray Baltinglass Co Wicklow

DRIPSEY SUPER KING ET	RACEVIEW KING	RACEVIEW GLADIATOR
		KILMICHAEL DIAMOND
	BALLINGAR KIM	BALLINGAR FRANCO
SLANEYVIEW NADINE	SLANEYVIEW GARETH	BALLINGAR EILEY
		GLENKEEN MARKSMAN
		STAR ROBERTA
	SLANEYVIEW GOLDIE	OVERHALL HIVY
		BIGROCK TULIP

Within Breed Index Data rel Across Breed

★★★★★	Suckler Beef Value	€197	31%	★★★★★
-------	---------------------------	------	-----	-------

★★★	<i>Beef Value</i>			
★★★★★	Calving Traits	-€5	28%	★★★★★
★★★★★	Weanling Export	€116	39%	★★★★★
★★★★★	Beef Carcass	€115	35%	★★★★

★★★★★	<i>Replacement Value</i>			
★★★★★	Milk & Fertility	€135	9%	★★★★★
★★★★★	Calf Quality	€352	37%	★★★★★

★★	<i>Other Key Traits</i>			
	% Difficulty Calving	6.27%	35%	★★
	Dociilty	%	%	

Data Rel: 40 - 60% = Ave 20 - 40% = Below Ave <20% = Poor

uro-Star Traits

uro-Star Rating (ICBF, Jan 2009)

Calving Traits			Weanling Export, Beef Carcass & Replacement Calf Traits					
Calv Diff (%)	Gest Len (days)	Mort (%)	Wean Wt Dir (kg)	Wean Calf Quality (%)	Carc Wt (kg)	Carcass Contf Score	Carcass Fat Score	Dry Matter Intake (kg)
6.27	1.4	0.16	35.04	23.91	21.16	1.38	-0.48	0.31

Replacement Milk & Fertility Traits					
Calv Int (days)	Survival (%)	Age 1st calv (days)	Wean Wt Mat (kg)	Calv Diff Mat (%)	Cull Cow (kg)
-1.84	0.59	-13.94	11.19	5.11	14.27

BLUP Linear Type

MUSCLE	SKELETAL	DOCILITY	RELIABILITY
118	98		40

Comments
 A very easy fleshed pale bull with a great temperament

Lot 19 RACEVIEW WILL KRONA
IE151420990401 DOB: 06-Mar-2008

Breed: Simmental
Male

Owner: Peter & Marion O'Connell - Knopogue Mallow Co Cork

RACEVIEW KING	RACEVIEW GLADIATOR	BRINKTON BRILLIANT
		RACEVIEW BEAUTY
	KILMICHAEL DIAMOND	AWL MANITOBA SPARTAN
RACEVIEW KRONA	SEABANK FLINT	KILMICHAEL SULTANA
		GRETNA HOUSE SUPERSONIC
	SEABANK TIFFANY	
	RACEVIEW BEAUTY	ENFIELD HURRICANE HUGO
	KILBERHERT VALERIE	

Within Breed		Index	Data rel	Across Breed
★★★★★	Suckler Beef Value	€201	31%	★★★★★
★	<i>Beef Value</i>			
★	Calving Traits	-€13	30%	★★
★★★★★	Weanling Export	€116	34%	★★★★★
★★★★★	Beef Carcass	€127	34%	★★★
	<i>Replacement Value</i>			
★★★★★	Milk & Fertility	€145	18%	★★★★★
★★★	Calf Quality	€354	34%	★★★
	<i>Other Key Traits</i>			
★	% Difficulty Calving	7.56%	41%	★★
	Docility	%	%	

Data Rel: 40 - 60% = Ave 20 - 40% = Below Ave <20% = Poor

uro-Star Traits			uro-Star Rating (ICBF, Jan 2009)						
Calving Traits			Weaning Export, Beef Carcass & Replacement Calf Traits						
Calv Diff (%)	Gest Len (days)	Mort (%)	Wean Wt Dir (kg)	Wean Calf Quality (%)	Carc Wt (kg)	Carcass Conif Score	Carcass Fat Score	Dry Matter Intake (kg)	
7.56	2.59	0.48	35.58	23.52	23.35	1.43	-0.66	0.2	
Replacement Milk & Fertility Traits						Comments			
Calv Int (days)	Survival (%)	Age 1st calv (days)	Wean Wt Mat (kg)	Calv Diff Mat (%)	Cull Cow (kg)				
-4.34	1.09	7.71	12.61	4.56	17.9				
BLUP Linear Type									
MUSCLE	SKELETAL	DOCILITY	RELIABILITY						
116	110		35						

Lot 20 RACEVIEW WINSTON KIM
IE151420920403 DOB: 07-Mar-2008

Breed: Simmental
Male

Owner: Peter & Marion O'Connell - Knopogue Mallow Co Cork

RACEVIEW KING	RACEVIEW GLADIATOR	BRINKTON BRILLIANT
		RACEVIEW BEAUTY
		AWL MANITOBA SPARTAN
	KILMICHAEL DIAMOND	KILMICHAEL SULTANA
BALLINGAR KIM	BALLINGAR FRANCO	HILLCREST BUTCHER
		BALLINGAR DAPHNE
		CORLESMORE BARRON
	BALLINGAR EILEY	POWERS BRICKSEY

Within Breed	Index	Data rel	Across Breed
★★★★★	Suckler Beef Value €220	32%	★★★★★

★★	<i>Beef Value</i>			
★★	Calving Traits	-€10	30%	★★★
★★★★★	Weanling Export	€107	35%	★★★★★
★★★★★	Beef Carcass	€142	36%	★★★★★

	<i>Replacement Value</i>			
★★★★★	Milk & Fertility	€143	16%	★★★★★
★★★★★	Calf Quality	€393	35%	★★★★★

	<i>Other Key Traits</i>			
★	% Difficulty Calving	7.01%	41%	★★
	Docility	%	%	

Data Rel: 40 - 60% = Ave 20 - 40% = Below Ave <20% = Poor

uro-Star Traits

uro-Star Rating (ICBF, Jan 2009)

Calving Traits			Weanling Export, Beef Carcass & Replacement Calf Traits					
Calv Diff (%)	Gest Len (days)	Mort (%)	Wean Wt Dir (kg)	Wean Calf Quality (%)	Carc Wt (kg)	Carcass Conf Score	Carcass Fat Score	Dry Matter Intake (kg)
7.01	2.54	0.22	31.86	22.14	32.75	1.59	-0.61	0.3

Replacement Milk & Fertility Traits					
Calv Int (days)	Survival (%)	Age 1st calv (days)	Wean Wt Mat (kg)	Calv Diff Mat (%)	Cull Cow (kg)
-4.83	1.24	-0.69	11.16	4.61	20.4

BLUP Linear Type

MUSCLE	SKELETAL	DOCILITY	RELIABILITY
116	108		36

Comments

Lot 21 KILTULLAGH WINSTON
IE311699290519 DOB: 24-Mar-2008

Breed: Simmental
Male

Owner: Francis Conry - Currislustia Ballinlough Castlereagh Co Roscommon

EXODUS	EISENHERZ	ECKHOLM
		788
	ROBE 93	EMU (PP)
		ROMY
CARREAGH ROBERTA	MILTON LORD-TIFFANY ET	CARNKERN TITAN
		SEABANK TIFFANY
	ANATRIM LAOISE	CELTIC HIGHFLYER
		ANATRIM CARRY

Within Breed Index Data rel Across Breed

★★	Suckler Beef Value	€166	18%	★★★★★
----	---------------------------	------	-----	-------

<i>Beef Value</i>				
★★★★	Calving Traits	-€6	27%	★★★★★
★★★★	Weanling Export	€94	12%	★★★★
★★	Beef Carcass	€101	11%	★★

<i>Replacement Value</i>				
★★	Milk & Fertility	€106	4%	★★★★★
★★★★	Calf Quality	€302	13%	★★★★

<i>Other Key Traits</i>				
★★★★★	% Difficulty Calving	4.4%	32%	★★★★★
	Docility	%	%	

Data Rel: 40 - 60% = Ave 20 - 40% = Below Ave <20% = Poor

uro-Star Traits

uro-Star Rating (ICBF, Jan 2009)

Calving Traits			Weanling Export, Beef Carcass & Replacement Calf Traits					
Calv Diff (%)	Gest Len (days)	Mort (%)	Wean Wt Dir (kg)	Wean Calf Quality (%)	Carc Wt (kg)	Carcass Conf Score	Carcass Fat Score	Dry Matter Intake (kg)
4.4	2.75	0.56	29.91	18.52	22.02	1.2	-0.2	0.42

Replacement Milk & Fertility Traits					
Calv Int (days)	Survival (%)	Age 1st calv (days)	Wean Wt Mat (kg)	Calv Diff Mat (%)	Cull Cow (kg)
-2.08	0.92	-3.55	10.88	7.08	14.07

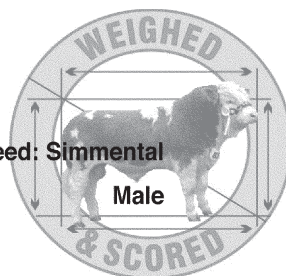
BLUP Linear Type

MUSCLE	SKELETAL	DOCILITY	RELIABILITY
105	106		15

Comments
Lovely long pale polled bull

Lot 22 HILLCREST WATSON
 IE301293610577 DOB: 27-Mar-2008

Breed: Simmental
 Male



Breeder: Padge Mulhare - Cloghan Birr Co Offaly

Owner: Patrick Murphy - Kilmaine Fortal Birr Co Offaly

HILLCREST SUPREMO	MONADUFF LEGEND	DIRNANEAN NUGGET
		MONADUFF GRACE
	HILLCREST NADIA ET	CRAILING BARRISTER
		HILLCREST WINNIE
HILLCREST SAMANTHA	HILLCREST NAUGHTY	ROSTEN BARNEY
		HILLCREST WINNIE
	RATHLEE NATASHA	HILLCREST CHAMPION
		HILLCREST EUNICE

Within Breed Index Data rel Across Breed

★★★	Suckler Beef Value	€177	27%	★★★★★
-----	---------------------------	------	-----	-------

<i>Beef Value</i>				
★★★	Calving Traits	-€4	19%	★★★★★
★★★★★	Weanling Export	€101	39%	★★★★★
★★★	Beef Carcass	€109	34%	★★★

<i>Replacement Value</i>				
★★	Milk & Fertility	€100	7%	★★★★★
★★★	Calf Quality	€325	36%	★★★

<i>Other Key Traits</i>				
★★★★★	% Difficulty Calving	5.19%	32%	★★★
	Docility	%	%	

Data Rel: 40 - 60% = Ave 20 - 40% = Below Ave <20% = Poor

uro-Star Traits

uro-Star Rating (ICBF, Jan 2009)

Calving Traits			Weanling Export, Beef Carcass & Replacement Calf Traits					
Calv Diff (%)	Gest Len (days)	Mort (%)	Wean Wt Dir (kg)	Wean Calf Quality (%)	Carc Wt (kg)	Carcass Conf Score	Carcass Fat Score	Dry Matter Intake (kg)
5.19	2.78	-0.05	29.7	21.13	23.1	1.51	-0.19	0.37

Replacement Milk & Fertility Traits					
Calv Int (days)	Survival (%)	Age 1st calv (days)	Wean Wt Mat (kg)	Calv Diff Mat (%)	Cull Cow (kg)
-2.42	0.49	-21.79	8.44	7.3	14.37

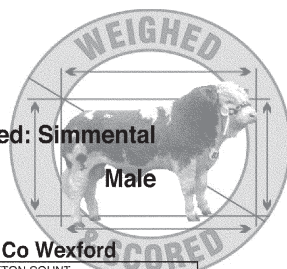
BLUP Linear Type

MUSCLE	SKELETAL	DOCILITY	RELIABILITY
120	100		38

Comments

Lot 23 KILCLORAN WOGAN
 IE371402340411 DOB: 31-Mar-2008

Breed: Simmental
 Male



Owner: Matthew Mcdonald - Kilcloran Camolin Enniscorthy Co Wexford

OMORGA PRINCE	STERLING FLINT	BRINKTON COUNT
		STERLING NOONTIMES WHITEWINE
	CLEENAGH DAFFODIL	CARNKERN TITAN
		CLEENAGH KAY
HEYWOOD ESQUIRE		
KILCLORAN FUSCHIA	GRETNA HOUSE SUPERSONIC	CHESTON KATIE
		AMERICA POLERO IMP. 88A
	KILCLORAN ALICE	MERRYMEETING LUCY

Within Breed Index Data rel Across Breed

★★★★★	Suckler Beef Value	€213	31%	★★★★★
-------	---------------------------	------	-----	-------

★★★	<i>Beef Value</i>			
★★★	Calving Traits	-€6	24%	★★★★★
★★★★★	Weanling Export	€112	42%	★★★★★
★★★★★	Beef Carcass	€121	38%	★★★

★★★★★	<i>Replacement Value</i>			
★★★★★	Milk & Fertility	€169	10%	★★★★★
★★★★★	Calf Quality	€379	39%	★★★★★

★★	<i>Other Key Traits</i>			
★★	% Difficulty Calving	6.27%	32%	★★
	Docility	%	%	

Data Rel: 40 - 60% = Ave 20 - 40% = Below Ave <20% = Poor

uro-Star Traits

uro-Star Rating (ICBF, Jan 2009)

Calving Traits			Weanling Export, Beef Carcass & Replacement Calf Traits					
Calv Diff (%)	Gest Len (days)	Mort (%)	Wean Wt Dir (kg)	Wean Calf Quality (%)	Carc Wt (kg)	Carcass Conf Score	Carcass Fat Score	Dry Matter Intake (kg)
6.27	2.28	-0.05	41.44	18.47	25.14	1.33	-0.27	0.63

Replacement Milk & Fertility Traits					
Calv Int (days)	Survival (%)	Age 1st calv (days)	Wean Wt Mat (kg)	Calv Diff Mat (%)	Cull Cow (kg)
-2.92	1.42	-27.21	12.83	6.78	17.73

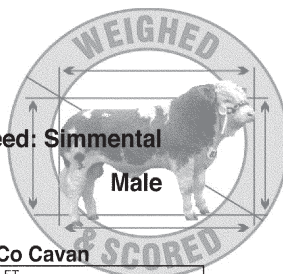
BLUP Linear Type

MUSCLE	SKELETAL	DOCILITY	RELIABILITY
114	107		47

Comments

Lot 24 KILDUFF WALCOT
IE121098560419 DOB: 01-Apr-2008

Breed: Simmental
Male



Owner: Robert John Dunne - Corporation Lands Belturbet Co Cavan

MARBELHILL LIAM	RICHARDSTOWN JUMBO	HAMLET
		IRLA IMP 75A
	LAKEVIEW EMERALD	FREIGHDUFF BRENDAN
		LAKEVIEW VIOLET
KILDUFF KANDY	ENFIELD BENZ	BALBO
		ELLA
	KILDUFF GINA	HILLCREST BUTCHER
		KILDUFF CINDY

Within Breed Index Data rel Across Breed

★★★★★	Suckler Beef Value	€206	34%	★★★★★
-------	---------------------------	------	-----	-------

★★★	<i>Beef Value</i>			
★★★★	Calving Traits	-€4	33%	★★★★★
★★★★★	Weanling Export	€101	36%	★★★★★
★★★★★	Beef Carcass	€124	36%	★★★

	<i>Replacement Value</i>			
★★★★★	Milk & Fertility	€130	22%	★★★★★
★★★★★	Calf Quality	€377	36%	★★★★★

	<i>Other Key Traits</i>			
★★★★★	% Difficulty Calving	4.45%	41%	★★★★★
	Docility	%	%	

Data Rel: 40 - 60% = Ave 20 - 40% = Below Ave <20% = Poor

uro-Star Traits

uro-Star Rating (ICBF, Jan 2009)

Calving Traits			Weanling Export, Beef Carcass & Replacement Calf Traits					
Calv Diff (%)	Gest Len (days)	Mort (%)	Wean Wt Dir (kg)	Wean Calf Quality (%)	Carc Wt (kg)	Carcass Conf Score	Carcass Fat Score	Dry Matter Intake (kg)
4.45	2.32	0.38	34.52	18.5	28.54	1.5	-0.22	0.53

Replacement Milk & Fertility Traits					
Calv Int (days)	Survival (%)	Age 1st calv (days)	Wean Wt Mat (kg)	Calv Diff Mat (%)	Cull Cow (kg)
-3.09	1.34	-17.8	9.97	6.94	15.64

BLUP Linear Type

MUSCLE	SKELETAL	DOCILITY	RELIABILITY
124	118		40

Comments
Excellent quality bull with great conformation. Top bloodlines - Kandys bull made 5100 at Roscommon Premier sale last year

Lot 25 HANSTOWN WALSER
IE361146530074 DOB: 03-Apr-2008

Breed: Simmental
Male

Owner: Peter Byrne - The Lane Hanstown Ballinea Mullingar Co Westmeath

WOODSTOCK II PARNELL	CLEENAGH FLASHER	CARNKERN TITAN
		CLEENAGH KAY
	WOODSTOCK II HAZEL	DIRNANEAN NUGGET
BALLYBANE ROE	BALLYBANE HENRY	BALLYBANE BREDA
		DIRNANEAN NUGGET
		CORRAN EAGLESTAR
	BALLYBANE ANNA	ENFIELD HURRICANE HUGO
		BALLYBANE VERA

Within Breed Index Data rel Across Breed

★★★	Suckler Beef Value	€181	26%	★★★★★
-----	--------------------	------	-----	-------

★★★	<i>Beef Value</i>			
★★★	Calving Traits	-€6	26%	★★★★★
★★★★★	Weanling Export	€99	26%	★★★★★
★★	Beef Carcass	€101	27%	★★

★★★★★	<i>Replacement Value</i>			
★★★★★	Milk & Fertility	€159	11%	★★★★★
★★★	Calf Quality	€308	27%	★★★

★★★★★	<i>Other Key Traits</i>			
	% Difficulty Calving	4.98%	39%	★★★
	Docility	%	%	

Data Rel: 40 - 60% = Ave 20 - 40% = Below Ave <20% = Poor

uro-Star Traits

uro-Star Rating (ICBF, Jan 2009)

Calving Traits			Weanling Export, Beef Carcass & Replacement Calf Traits					
Calv Diff (%)	Gest Len (days)	Mort (%)	Wean Wt Dir (kg)	Wean Calf Quality (%)	Carc Wt (kg)	Carcass Conf Score	Carcass Fat Score	Dry Matter Intake (kg)
4.98	2.55	0.43	32.08	19.29	20.36	1.4	-0.2	0.45

Replacement Milk & Fertility Traits					
Calv Int (days)	Survival (%)	Age 1st calv (days)	Wean Wt Mat (kg)	Calv Diff Mat (%)	Cull Cow (kg)
-4.5	1.6	-14.48	11.36	7.48	9.91

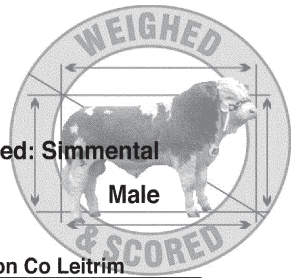
BLUP Linear Type

MUSCLE	SKELETAL	DOCILITY	RELIABILITY
116	106		22

Comments

Lot 26 CLOONE WILLIAM
 IE231321240141 DOB: 07-Apr-2008

Breed: Simmental
 Male



Owner: George Conboy - Gubbs Cloone Carrick-On-Shannon Co Leitrim

FREIGHDUFF BRENDAN	HERKULES	HINDU
		BLEAMI
	FREIGHDUFF TARA	DOVEA BERNAD
		FREIGHDUFF NORA
MONESS RITA	BRINKTON SOVREIGN	LODGE MAJOR
		STUARTSLAW MELODY
	MONESS EVELYN	SACOMBE EDGAR
		BALLYERRIN CARMEL

Within Breed Index Data rel Across Breed

★★	Suckler Beef Value	€148	33%	★★★★
----	---------------------------	------	-----	------

<i>Beef Value</i>				
★★	Calving Traits	-€9	32%	★★★
★★★	Weanling Export	€93	33%	★★★
★★	Beef Carcass	€97	34%	★★

<i>Replacement Value</i>				
★	Milk & Fertility	€70	26%	★★★★★
★★	Calf Quality	€280	34%	★★★

<i>Other Key Traits</i>				
★★★★★	% Difficulty Calving	4.44%	40%	★★★★★
	Docility	%	%	

Data Rel: 40 - 60% = Ave 20 - 40% = Below Ave <20% = Poor

uro-Star Traits uro-Star Rating (ICBF, Jan 2009)

Calving Traits			Weanling Export, Beef Carcass & Replacement Calf Traits					
Calv Diff (%)	Gest Len (days)	Mort (%)	Wean Wt Dir (kg)	Wean Calf Quality (%)	Carc Wt (kg)	Carcass Conf Score	Carcass Fat Score	Dry Matter Intake (kg)
4.44	3.08	1.04	29.49	18.43	20.23	1.34	-0.2	0.42

Replacement Milk & Fertility Traits					
Calv Int (days)	Survival (%)	Age 1st calv (days)	Wean Wt Mat (kg)	Calv Diff Mat (%)	Cull Cow (kg)
0.1	-0.14	-3.91	9.89	7.22	9.58

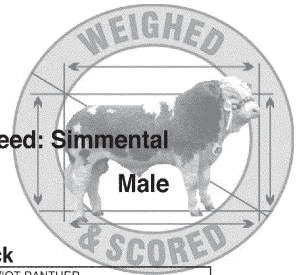
BLUP Linear Type

MUSCLE	SKELETAL	DOCILITY	RELIABILITY
118	101		43

Comments

Lot 27 TOWERHILL WORTH A LOOK
 IE241180560543 DOB: 09-Apr-2008

Breed: Simmental
 Male



Owner: Seamus Aherne - Towerhill Cappamore Co Limerick

CELTIC ROCK (ET)	CARNKERN TITAN	TEVIOT PANTHER
		CARNKERN NATASHA
	CELTIC HOMEMAKER	BRINKTON BRILLIANT
TOWERHILL POLYANNA		ANATRIM BRED A
	ANATRIM JACOB	BRINKTON BRILLIANT
		ANATRIM WANDA
		BALLAGAN KELLY
	TOWERHILL HELLEN	TOWERHILL SAMANTA

Within Breed Index Data rel Across Breed

★★★★★	Suckler Beef Value	€196	29%	★★★★★
-------	---------------------------	------	-----	-------

★★	<i>Beef Value</i>			
★★	Calving Traits	-€9	34%	★★★
★★★★★	Weanling Export	€109	29%	★★★★★
★★★★★	Beef Carcass	€116	26%	★★★

	<i>Replacement Value</i>			
★★★★★	Milk & Fertility	€148	9%	★★★★★
★★★★★	Calf Quality	€348	29%	★★★★★

★★★	<i>Other Key Traits</i>			
	% Difficulty Calving	5.56%	41%	★★★
	Docility	%	%	

Data Rel: 40 - 60% = Ave 20 - 40% = Below Ave <20% = Poor

uro-Star Traits

uro-Star Rating (ICBF, Jan 2009)

Calving Traits			Weanling Export, Beef Carcass & Replacement Calf Traits						
Calv Diff (%)	Gest Len (days)	Mort (%)	Wean Wt Dir (kg)	Wean Calf Quality (%)	Carc Wt (kg)	Carcass Conf Score	Carcass Fat Score	Dry Matter Intake (kg)	
5.56	2.48	0.74	37.84	19.66	22.85	1.22	-0.4	0.43	

Replacement Milk & Fertility Traits					
Calv Int (days)	Survival (%)	Age 1st calv (days)	Wean Wt Mat (kg)	Calv Diff Mat (%)	Cull Cow (kg)
-3.44	1.73	-17.98	11.59	7.35	17.26

BLUP Linear Type

MUSCLE	SKELETAL	DOCILITY	RELIABILITY
114	102		27

Comments

Very docile well muscled solid red bull from a very milky cow family. Export tested.
www.towerhillsimmentals.com

Lot 28

SILKEN WARDEN

Breed: Simmental

IE181503230110

DOB: 09-Apr-2008

Male

Owner: Vivian Silke - Castlecreevy Corrandulla Co Galway

DERROUGH SAMUAL	HILLCREST KING	HILLCREST CHAMPION
		BALLYBANE RUTH
	DERROUGH GRACE	SEABANK BLANCO
		DERROUGH DAISY
SILKEN MARLEEN	LANNA FRANK	GRETNA HOUSE SUPERSONIC
		LANNA BETTY
	SILKEN JILLIAN	BLACKFORD TRIDENT
		KNOCKMEAL BARBIE

Within Breed Index Data rel Across Breed

★★★★★	Suckler Beef Value	€222	24%	★★★★★
-------	---------------------------	------	-----	-------

	<i>Beef Value</i>			
★★★	Calving Traits	-€3	27%	★★★★★
★★★★★	Weanling Export	€101	24%	★★★★★
★★★★★	Beef Carcass	€136	23%	★★★★★

	<i>Replacement Value</i>			
★★★★★	Milk & Fertility	€131	10%	★★★★★
★★★★★	Calf Quality	€414	24%	★★★★★

	<i>Other Key Traits</i>			
★★★	% Difficulty Calving	5.79%	34%	★★★
	Docility	%	%	

Data Rel: 40 - 60% = Ave 20 - 40% = Below Ave <20% = Poor

uro-Star Traits

uro-Star Rating (ICBF, Jan 2009)

Calving Traits			Weanling Export, Beef Carcass & Replacement Calf Traits					
Calv Diff (%)	Gest Len (days)	Mort (%)	Wean Wt Dir (kg)	Wean Calf Quality (%)	Carc Wt (kg)	Carcass Conf Score	Carcass Fat Score	Dry Matter Intake (kg)
5.79	1.72	-0.02	36.53	17.34	28.96	1.47	-0.52	0.35

Replacement Milk & Fertility Traits					
Calv Int (days)	Survival (%)	Age 1st calv (days)	Wean Wt Mat (kg)	Calv Diff Mat (%)	Cull Cow (kg)
-3.51	1.58	-11.04	11.37	6.94	21.27

BLUP Linear Type

MUSCLE	SKELETAL	DOCILITY	RELIABILITY
114	105		22

Comments
Very docile animal with dam having an abundance of milk

Lot 29 LISMOY WARRIOR

Breed: Simmental

IE251135890495

DOB: 12-Apr-2008

Male

Owner: Thomas O'Malley - Lamagh Newtownforbes Co Longford

KILBRIDE FARM NEWRY	DOVEFIELDS GALLANT	CAMUS BRANDY
		HEVINGHAM PIAF
	KILBRIDE FARM EUNICE D29	MONCUR SENSATION
		KILBRIDE FARM EUNICE A25
CLONGUIISH RAPUNZEL	BALLYDUFF JEWELLER	SACOMBE WISHPULL THINKING
		BALLYDUFF WENDY
	CELTCIC MAGGIE	CELTCIC HIGHFLYER
		ANATRIM DIMPLE

Within Breed Index Data rel Across Breed

★★★★	Suckler Beef Value	€193	30%	★★★★★
------	---------------------------	------	-----	-------

★★★	<i>Beef Value</i>			
★★★★	Calving Traits	-€4	30%	★★★★★
★★★★★	Weanling Export	€98	32%	★★★
★★★★★	Beef Carcass	€115	31%	★★★

★★★	<i>Replacement Value</i>			
★★★★★	Milk & Fertility	€123	13%	★★★★★
★★★★★	Calf Quality	€353	32%	★★★★★

★★★★★	<i>Other Key Traits</i>			
	% Difficulty Calving	4.76%	41%	★★★
	Docility	%	%	

Data Rel: 40 - 60% = Ave 20 - 40% = Below Ave <20% = Poor

uro-Star Traits

uro-Star Rating (ICBF, Jan 2009)

Calving Traits			Weanling Export, Beef Carcass & Replacement Calf Traits					
Calv Diff (%)	Gest Len (days)	Mort (%)	Wean Wt Dir (kg)	Wean Calf Quality (%)	Carc Wt (kg)	Carcass Conf Score	Carcass Fat Score	Dry Matter Intake (kg)
4.76	2.19	0.34	33.42	18.09	26.56	1.25	-0.16	0.49

Replacement Milk & Fertility Traits					
Calv Int (days)	Survival (%)	Age 1st calv (days)	Wean Wt Mat (kg)	Calv Diff Mat (%)	Cull Cow (kg)
-1.86	0.2	-9.81	12.35	6.61	12.78

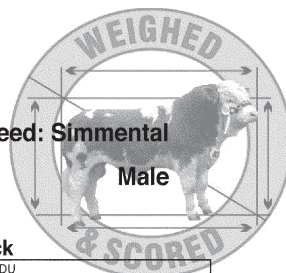
BLUP Linear Type

MUSCLE	SKELETAL	DOCILITY	RELIABILITY
114	118		31

Comments

Lot 30 TOWERHILL WEE MAN
 IE241180570544 DOB: 14-Apr-2008

Breed: Simmental
 Male



Owner: Seamus Aherne - Towerhill Cappamore Co Limerick

FREIGHDUFF BRENDAN	HERKULES	HINDU
		BLEAMI
	FREIGHDUFF TARA	DOVEA BERNAD
		FREIGHDUFF NORA
TOWERHILL KRISTINE	MAGHERACRIGAN SPECIAL	ORAGE
		BALLYBANE NITA
		SEABANK PEDRO
	TOWERHILL CHRISTINA	TOWERHILL ASHLING

Within Breed Index Data rel Across Breed

★	Suckler Beef Value	€122	36%	★★★★
---	---------------------------	------	-----	------

★	<i>Beef Value</i>			
★	Calving Traits	-€23	38%	★
★★★★★	Weanling Export	€99	34%	★★★★★
★★	Beef Carcass	€91	35%	★★

	<i>Replacement Value</i>			
★	Milk & Fertility	€84	26%	★★★★★
★	Calf Quality	€213	36%	★★

	<i>Other Key Traits</i>			
★	% Difficulty Calving	9.44%	43%	★
	Docility	%	%	

Data Rel: 40 - 60% = Ave 20 - 40% = Below Ave <20% = Poor

uro-Star Traits

uro-Star Rating (ICBF, Jan 2009)

Calving Traits			Weanling Export, Beef Carcass & Replacement Calf Traits					
Calv Diff (%)	Gest Len (days)	Mort (%)	Wean Wt Dir (kg)	Wean Calf Quality (%)	Carc Wt (kg)	Carcass Conf Score	Carcass Fat Score	Dry Matter Intake (kg)
9.44	3.33	1.25	29.76	20.51	18.65	1.36	-0.18	0.49

Replacement Milk & Fertility Traits					
Calv Int (days)	Survival (%)	Age 1st calv (days)	Wean Wt Mat (kg)	Calv Diff Mat (%)	Cull Cow (kg)
-1.76	0.02	16.49	11.01	5.82	9.42

BLUP Linear Type

MUSCLE	SKELETAL	DOCILITY	RELIABILITY
116	97		35

Comments
Extremely docile well muscled solid red bull from a milky dam line. Export tested. www.towerhillsimmentals.com

Lot 31 KILTULLAGH WESLEY
IE311699260524 DOB: 25-Apr-2008

Breed: Simmental
Male

Owner: Francis Conry - Currislustia Ballinlough Castlereagh Co Roscommon

DRIPSEY SUPER KING ET	RACEVIEW KING	RACEVIEW GLADIATOR
		KILMICHAEL DIAMOND
	BALLINGAR KIM	BALLINGAR FRANCO
		BALLINGAR EILEY
CARNKERN TITAN		
SEABANK TIFFANY		
CARREAGH PALOMA	MILTON LORD-TIFFANY ET	BALL YBANE CLIFF
		KILNALAG ENERGEY
	KILNALAG ANNETT	

Within Breed Index Data rel Across Breed

★★★★★	Suckler Beef Value	€204	23%	★★★★★
-------	---------------------------	------	-----	-------

★	<i>Beef Value</i>			
★★★★★	Calving Traits	-€12	28%	★★
★★★★★	Weanling Export	€104	19%	★★★★★
★★★★★	Beef Carcass	€131	19%	★★★★★

★★★★★	<i>Replacement Value</i>			
★★★★★	Milk & Fertility	€146	9%	★★★★★
★★★★★	Calf Quality	€360	20%	★★★★★

★	<i>Other Key Traits</i>			
	% Difficulty Calving	7.16%	33%	★★
	Docility	%	%	

Data Rel: 40 - 60% = Ave 20 - 40% = Below Ave <20% = Poor

uro-Star Traits

uro-Star Rating (ICBF, Jan 2009)

Calving Traits			Weanling Export, Beef Carcass & Replacement Calf Traits					
Calv Diff (%)	Gest Len (days)	Mort (%)	Wean Wt Dir (kg)	Wean Calf Quality (%)	Carc Wt (kg)	Carcass Conf Score	Carcass Fat Score	Dry Matter Intake (kg)
7.16	2.61	0.56	33.14	20.47	29.69	1.45	-0.45	0.38

Replacement Milk & Fertility Traits					
Calv Int (days)	Survival (%)	Age 1st calv (days)	Wean Wt Mat (kg)	Calv Diff Mat (%)	Cull Cow (kg)
-5.07	1.64	-3.93	10.65	5.51	18.25

BLUP Linear Type

MUSCLE	SKELETAL	DOCILITY	RELIABILITY
117	109		22

Comments

Lot 32 RATHFEE WALLY

Breed: Simmental

IE181470060231 DOB: 06-May-2008

Male

Owner: Michael Bohan - Rathfee Turloughmore Co Galway

KILNALAG MAGIC	CLETTA HOMER	SYCAMORE CHALLENGER
		STAR TERESE
	KILNALAG EASTERN	BALLYBANE CLIFF
		KILNALAG AISIE
CARBERY PAMELA	CRAILING BARRISTER	CAMUS VOLUNTEER
		CRAILING TOFFEE
		SEABANK PEDRO
	ARDCATA DAME	LUMMIN SELINA

Within Breed Index Data rel Across Breed

★★	Suckler Beef Value	€147	18%	★★★★
----	---------------------------	------	-----	------

★	<i>Beef Value</i>			
★	Calving Traits	-€12	19%	★★
★★★★★	Weanling Export	€101	20%	★★★★★
★	Beef Carcass	€83	17%	★★

★★★★★	<i>Replacement Value</i>			
★	Milk & Fertility	€152	6%	★★★★★
	Calf Quality	€238	18%	★★

★	<i>Other Key Traits</i>			
	% Difficulty Calving	7.73%	33%	★★
	Docility	%	%	

Data Rel: 40 - 60% = Ave 20 - 40% = Below Ave <20% = Poor

uro-Star Traits uro-Star Rating (ICBF, Jan 2009)

Calving Traits			Weanling Export, Beef Carcass & Replacement Calf Traits					
Calv Diff (%)	Gest Len (days)	Mort (%)	Wean Wt Dir (kg)	Wean Calf Quality (%)	Carc Wt (kg)	Carcass Conf Score	Carcass Fat Score	Dry Matter Intake (kg)
7.73	2.16	0.42	30.69	20.63	14.04	1.2	-0.21	0.4

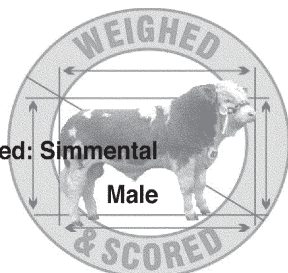
Replacement Milk & Fertility Traits					
Calv Int (days)	Survival (%)	Age 1st calv (days)	Wean Wt Mat (kg)	Calv Diff Mat (%)	Cull Cow (kg)
-2.44	0.73	-8.54	12.94	6.03	9.45

BLUP Linear Type			
MUSCLE	SKELETAL	DOCILITY	RELIABILITY
109	110		17

Comments

Lot 33 CREGMORE WONDER
 IE181455530290 DOB: 13-May-2008

Breed: Simmental
 Male



Owner: Thomas Burke - Cregmore Claregalway Co Galway

MARBELHILL LIAM	RICHARDSTOWN JUMBO	HAMLET
		IRLA IMP.75A
	LAKEVIEW EMERALD	FREIGHDUFF BRENDAN
		LAKEVIEW VIOLET
CREGMORE PRETTY-POLLY	BALLYDUFF JEWELLER	SACOMBE WISHFULL THINKING
		BALLYDUFF WENDY
	GERSPLACE MARY	CORRIB KENNETH
		KILNALAG GRAINNE

Within Breed Index Data rel Across Breed

★★★★	Suckler Beef Value	€187	31%	★★★★★
------	---------------------------	------	-----	-------

★★	<i>Beef Value</i>			
★★★	Calving Traits	-€8	32%	★★★
★★★★★	Weanling Export	€98	31%	★★★
★★★	Beef Carcass	€114	32%	★★★

	<i>Replacement Value</i>			
★★★★★	Milk & Fertility	€134	21%	★★★★★
★★★	Calf Quality	€332	32%	★★★★★

★★	<i>Other Key Traits</i>			
	% Difficulty Calving	6.14%	40%	★★
	Docility	%	%	

Data Rel: 40 - 60% = Ave 20 - 40% = Below Ave <20% = Poor

uro-Star Traits

uro-Star Rating (ICBF, Jan 2009)

Calving Traits			Weanling Export, Beef Carcass & Replacement Calf Traits					
Calv Diff (%)	Gest Len (days)	Mort (%)	Wean Wt Dir (kg)	Wean Calf Quality (%)	Carc Wt (kg)	Carcass Conf Score	Carcass Fat Score	Dry Matter Intake (kg)
6.14	2.08	0.51	32.13	18.85	26.45	1.54	-0.05	0.53

Replacement Milk & Fertility Traits					
Calv Int (days)	Survival (%)	Age 1st calv (days)	Wean Wt Mat (kg)	Calv Diff Mat (%)	Cull Cow (kg)
-0.64	0.34	-29.95	11.09	6.79	10.33

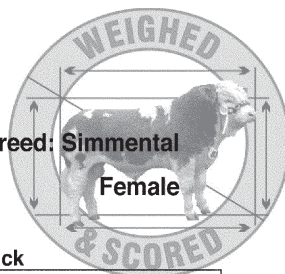
BLUP Linear Type

MUSCLE	SKELETAL	DOCILITY	RELIABILITY
121	118		44

Comments
Fantastic young bull - excellent weight for age

Lot 34 TOWERHILL TAMARA
IE241180560493 DOB: 04-Dec-2006

Breed: Simmental
Female



Owner: Seamus Aherne - Towerhill Cappamore Co Limerick

MARBELHILL LIAM	RICHARDSTOWN JUMBO	HAMLET
		IRLA IMP '75A
	LAKEVIEW EMERALD	FREIGHDUFF BRENDAN
		LAKEVIEW VIOLET
TOWERHILL NAOMI	ROSTEN BARNEY	GRETNA HOUSE SUPERSONIC
		PARKGATE TEMPTRESS
		MAGHERACRIGAN SPECIAL
	TOWERHILL KRISTINE	TOWERHILL CHRISTINA

Within Breed Index Data rel Across Breed

★★★	Suckler Beef Value	€179	38%	★★★★★
-----	---------------------------	------	-----	-------

★★	<i>Beef Value</i>			
★★★	Calving Traits	-€8	39%	★★★
★★★	Weanling Export	€97	39%	★★★
★★★	Beef Carcass	€108	39%	★★★

	<i>Replacement Value</i>			
★★★★★	Milk & Fertility	€137	21%	★★★★★
★★★	Calf Quality	€315	39%	★★★

★★	<i>Other Key Traits</i>			
	% Difficulty Calving	6.09%	42%	★★
	Docility	%	%	

Data Rel: 40 - 60% = Ave 20 - 40% = Below Ave <20% = Poor

uro-Star Traits

uro-Star Rating (ICBF, Jan 2009)

Calving Traits			Weanling Export, Beef Carcass & Replacement Calf Traits					
Calv Diff (%)	Gest Len (days)	Mort (%)	Wean Wt Dir (kg)	Wean Calf Quality (%)	Carc Wt (kg)	Carcass Conf Score	Carcass Fat Score	Dry Matter Intake (kg)
6.09	2.59	0.25	31.13	18.86	25.57	1.49	-0.07	0.59

Replacement Milk & Fertility Traits					
Calv Int (days)	Survival (%)	Age 1st calv (days)	Wean Wt Mat (kg)	Calv Diff Mat (%)	Cull Cow (kg)
-3.36	1.24	-5.01	12.59	7.08	15.48

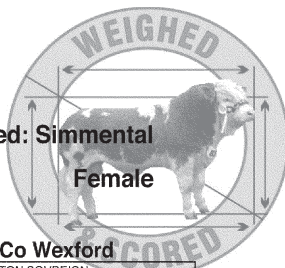
BLUP Linear Type

MUSCLE	SKELETAL	DOCILITY	RELIABILITY
117	116		45

Comments
Served to Hillcrest Jerome on December 8th - scanned in calf. A very well developed heifer. Export tested. www.towerhillsimmentals.com

Lot 35 KILCLORAN VERONICA
IE371402350379 DOB: 11-Sep-2007

Breed: Simmental
Female



Owner: Matthew McDonald - Kilcloran Camolin Enniscorthy Co Wexford

ANATRIM JACOB	BRINKTON BRILLIANT	BRINKTON SOVREIGN
		BRINKTON SANDRA
	ANATRIM WANDA	HERKULES
KILCLORAN LEAH	BRINKTON SOVREIGN	BREU IMP.75A
		LODGE MAJOR
		STUARTSLAW MELODY
	KILCLORAN JANE	KILCLORAN FREDERICK
	KILCLORAN FLASH	

Within Breed Index Data rel Across Breed

★★★★★	Suckler Beef Value	€229	35%	★★★★★
-------	---------------------------	------	-----	-------

★★★★★	<i>Beef Value</i>			
★★★★★	Calving Traits	-€3	30%	★★★★★
★★★★★	Weaning Export	€112	44%	★★★★★
★★★★★	Beef Carcass	€144	41%	★★★★★

★★★★★	<i>Replacement Value</i>			
★★★★★	Milk & Fertility	€113	17%	★★★★★
★★★★★	Calf Quality	€433	43%	★★★★★

★★★★★	<i>Other Key Traits</i>			
★★★★★	% Difficulty Calving	4.94%	41%	★★★
	Docility	%	%	

Data Rel: 40 - 60% = Ave 20 - 40% = Below Ave <20% = Poor

uro-Star Traits

uro-Star Rating (ICBF, Jan 2009)

Calving Traits			Weaning Export, Beef Carcass & Replacement Calf Traits					
Calv Diff (%)	Gest Len (days)	Mort (%)	Wean Wt Dir (kg)	Wean Calf Quality (%)	Carc Wt (kg)	Carcass Conf Score	Carcass Fat Score	Dry Matter Intake (kg)
4.94	1.38	0.48	35.91	21.67	30.93	1.72	-0.54	0.32

Replacement Milk & Fertility Traits					
Calv Int (days)	Survival (%)	Age 1st calv (days)	Wean Wt Mat (kg)	Calv Diff Mat (%)	Cull Cow (kg)
-0.64	1.25	-23.7	10.68	7.82	17.48

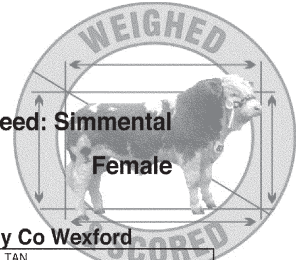
BLUP Linear Type

MUSCLE	SKELETAL	DOCILITY	RELIABILITY
128	107		47

Comments
Very well muscled

Lot 36 KILCLORAN VANESSA
IE371402360388 DOB: 23-Oct-2007

Breed: Simmental
Female



Owner: Matthew McDonald - Kilcloran Camolin Enniscorthy Co Wexford

CAMUS FRONTIER	SIEGFRIED	SULTAN
		BIENE
	CAMUS VIRGINIA	HOCKENHULL MARVEL
		STAR FANNY
KILCLORAN NITA	KILCLORAN LEO	HILLCREST CHAMPION
		KILCLORAN CHANTEL
		DRUMNEIL BOLERO
	KILCLORAN FLORRIE	KILCLORAN VIRGINIA

Within Breed Index Data rel Across Breed

★★★	Suckler Beef Value	€179	38%	★★★★★
-----	---------------------------	------	-----	-------

★	<i>Beef Value</i>			
★★	Calving Traits	-€14	35%	★★
★★★★★	Weanling Export	€99	45%	★★★★★
★★★★★	Beef Carcass	€119	42%	★★★★

★★★	<i>Replacement Value</i>			
★★★	Milk & Fertility	€112	16%	★★★★★
★★★	Calf Quality	€329	44%	★★★★★

★	<i>Other Key Traits</i>			
	% Difficulty Calving	9.13%	40%	★
	Docility	%	%	

Data Rel: 40 - 60% = Ave 20 - 40% = Below Ave <20% = Poor

uro-Star Traits

uro-Star Rating (ICBF, Jan 2009)

Calving Traits			Weanling Export, Beef Carcass & Replacement Calf Traits					
Calv Diff (%)	Gest Len (days)	Mort (%)	Wean Wt Dir (kg)	Wean Calf Quality (%)	Carc Wt (kg)	Carcass Conf Score	Carcass Fat Score	Dry Matter Intake (kg)
9.13	2.29	0.15	35.14	17.39	26.13	1.1	-0.37	0.42

Replacement Milk & Fertility Traits					
Calv Int (days)	Survival (%)	Age 1st calv (days)	Wean Wt Mat (kg)	Calv Diff Mat (%)	Cull Cow (kg)
-3.19	0.04	7.12	11.53	3.97	19.83

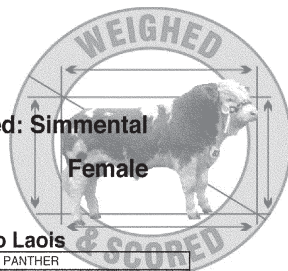
BLUP Linear Type

MUSCLE	SKELETAL	DOCILITY	RELIABILITY
106	100		45

Comments

Lot 37 CLONAGH VIOLET
IE221283370609 DOB: 21-Nov-2007

Breed: Simmental
Female



Owner: Garreth T Behan - Clonagowan Ballyfin Portlaoise Co Laois

MILTON LORD-TIFFANY ET	CARNKERN TITAN	TEVIOT PANTHER
		CARNKERN NATASHA
	SEABANK TIFFANY	HERRSCHER
		STAR POLLY
CLONAGH KATHY	KILFRUSH GERALDO	BRINKTON BRILLIANT
		CORAH BRIGETTA
	CLONAGH DORA	CAMUS VIBRANT
		HOLLOWFIELD ALBERTA

Within Breed Index Data rel Across Breed

★★	Suckler Beef Value	€158	40%	★★★★
----	---------------------------	------	-----	------

★	<i>Beef Value</i>			
★	Calving Traits	-€12	37%	★★
★★★	Weanling Export	€95	46%	★★★
★★	Beef Carcass	€101	43%	★★

	<i>Replacement Value</i>			
★★	Milk & Fertility	€104	18%	★★★★
★★	Calf Quality	€286	45%	★★★

★★	<i>Other Key Traits</i>			
★★	% Difficulty Calving	6.53%	42%	★★
	Docility	%	%	

Data Rel: 40 - 60% = Ave 20 - 40% = Below Ave <20% = Poor

uro-Star Traits

uro-Star Rating (ICBF, Jan 2009)

Calving Traits			Weanling Export, Beef Carcass & Replacement Calf Traits					
Calv Diff (%)	Gest Len (days)	Mort (%)	Wean Wt Dir (kg)	Wean Calf Quality (%)	Carc Wt (kg)	Carcass Conf Score	Carcass Fat Score	Dry Matter Intake (kg)
6.53	2.24	0.92	31.73	17.95	21.88	1.19	-0.23	0.48

Replacement Milk & Fertility Traits					
Calv Int (days)	Survival (%)	Age 1st calv (days)	Wean Wt Mat (kg)	Calv Diff Mat (%)	Cull Cow (kg)
-2.29	1.27	-15.4	8.01	6.1	17.7

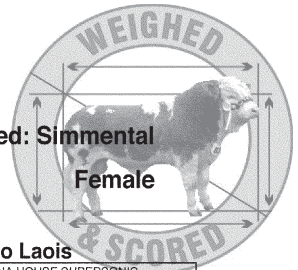
BLUP Linear Type

MUSCLE	SKELETAL	DOCILITY	RELIABILITY
107	96		46

Comments
Regular cycle. Outwintered. Herd negative vro IBR, BVD, Johnes.
www.clonaggherds.com

Lot 38 CLONAGH VIRTUE
 IE221283310628 DOB: 25-Dec-2007

Breed: Simmental
 Female



Owner: Garreth T Behan - Clonagowan Ballyfin Portlaoise Co Laois

HILLCREST KING	HILLCREST CHAMPION	GRETNA HOUSE SUPERSONIC
		CAMUS SOLITAIRE
	BALLYBANE RUTH	BALLYBANE LAD
		BALLYBANE FLOWER
CLONAGH KERRA	MOUNT ROYAL WESTERN	MAGHERACRIGAN SPECIAL
		GRANAGH PHILO
	CLONASLEE ALMA	ENFIELD BENZ
		CLONASLEE SADIE

Within Breed Index Data rel Across Breed

★★★★★	Suckler Beef Value	€200	42%	★★★★★
-------	--------------------	------	-----	-------

	<i>Beef Value</i>			
★★★	Calving Traits	-€5	40%	★★★★★
★★★	Weanling Export	€95	46%	★★★
★★★★★	Beef Carcass	€133	44%	★★★★★

	<i>Replacement Value</i>			
★	Milk & Fertility	€72	27%	★★★★★
★★★★★	Calf Quality	€396	45%	★★★★★

	<i>Other Key Traits</i>			
★★★★★	% Difficulty Calving	5.27%	42%	★★★
	Docility	%	%	

Data Rel: 40 - 60% = Ave 20 - 40% = Below Ave <20% = Poor

uro-Star Traits

uro-Star Rating (ICBF, Jan 2009)

Calving Traits			Weanling Export, Beef Carcass & Replacement Calf Traits					
Calv Diff (%)	Gest Len (days)	Mort (%)	Wean Wt Dir (kg)	Wean Calf Quality (%)	Carc Wt (kg)	Carcass Conf Score	Carcass Fat Score	Dry Matter Intake (kg)
5.27	3.17	-0.08	35.61	15.54	31.04	1.2	-0.4	0.44

Replacement Milk & Fertility Traits					
Calv Int (days)	Survival (%)	Age 1st calv (days)	Wean Wt Mat (kg)	Calv Diff Mat (%)	Cull Cow (kg)
-2.6	0.71	-9.56	9.2	7.89	23.71

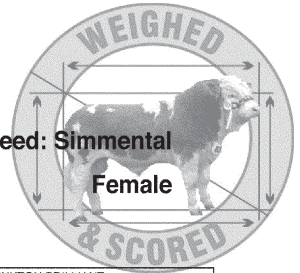
BLUP Linear Type

MUSCLE	SKELETAL	DOCILITY	RELIABILITY
107	117		47

Comments
Sweet red heifer out of excellent dam line. Outwintered. Herd negative vro IBR, BVD, Johnes. www.clonaggherds.com

Lot 39 BEECHHILL WANDA
IE321447780226 DOB: 12-Jan-2008

Breed: Simmental
Female



Owner: Pdraig Gallagher - Stokane Enniscrone Co Sligo

RACEVIEW KING	RACEVIEW GLADIATOR	BRINKTON BRILLIANT
		RACEVIEW BEAUTY
	KILMICHAEL DIAMOND	AWL MANITOBA SPARTAN
MONADUFF MINNIE	MONADUFF JEWEL	KILMICHAEL SULTANA
		DIRNANEAN NUGGET
		HILLCREST CLAIRE
	MONADUFF HONEY	HILLCREST BUTCHER
		MONADUFF CRYSTAL

Within Breed Index Data rel Across Breed

★★★★★	Suckler Beef Value	€201	32%	★★★★★
-------	--------------------	------	-----	-------

★	<i>Beef Value</i>			
★★★★★	Calving Traits	-€17	31%	★
★★★★★	Weanling Export	€113	34%	★★★★★
★★★★★	Beef Carcass	€131	34%	★★★★★

★★★★★	<i>Replacement Value</i>			
★★★★★	Milk & Fertility	€148	17%	★★★★★
★★★★★	Calf Quality	€354	34%	★★★★★

★	<i>Other Key Traits</i>			
	% Difficulty Calving	9.27%	41%	★
	Docility	%	%	

Data Rel: 40 - 60% = Ave 20 - 40% = Below Ave <20% = Poor

uro-Star Traits

uro-Star Rating (ICBF, Jan 2009)

Calving Traits			Weanling Export, Beef Carcass & Replacement Calf Traits					
Calv Diff (%)	Gest Len (days)	Mort (%)	Wean Wt Dir (kg)	Wean Calf Quality (%)	Carc Wt (kg)	Carcass Conf Score	Carcass Fat Score	Dry Matter Intake (kg)
9.27	3.04	0.26	37.45	21.23	26.19	1.31	-0.6	0.3

Replacement Milk & Fertility Traits					
Calv Int (days)	Survival (%)	Age 1st calv (days)	Wean Wt Mat (kg)	Calv Diff Mat (%)	Cull Cow (kg)
-6.14	1.55	7.12	11.11	4.61	19.8

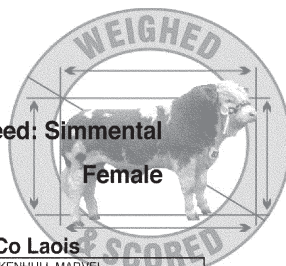
BLUP Linear Type

MUSCLE	SKELETAL	DOCILITY	RELIABILITY
110	115		40

Comments
Wanda comes from a very powerfull dam line consistently breeding quality stock - Kilmichael Diamond, Camus Solitare and Millbrook Grace

Lot 40 CLONAGH WILMA
IE221283360657 DOB: 26-Feb-2008

Breed: Simmental
Female



Owner: Garreth T Behan - Clonagowan Ballyfin Portlaoise Co Laois

BALLYDUFF JEWELLER	SACOMBE WISHFULL THINKING	HOCKENHULL MARVEL
		SACOMBE MAME
	BALLYDUFF WENDY	BRITTAS STANLEY
		INCHANAPPA GRACE
CLONAGH KATHY	KILFRUSH GERALDO	BRINKTON BRILLIANT
		CORAH BRIGETTA
	MILLBROOK ALMA	SACOMBE EDGAR
		MILLBROOK TULIPE

Within Breed Index Data rel Across Breed

★	Suckler Beef Value	€128	38%	★★★
---	---------------------------	------	-----	-----

	<i>Beef Value</i>			
★	Calving Traits	-€12	32%	★★
★	Weanling Export	€78	47%	★★
★★	Beef Carcass	€90	43%	★★

	<i>Replacement Value</i>			
★	Milk & Fertility	€79	24%	★★★★
★	Calf Quality	€224	44%	★★

	<i>Other Key Traits</i>			
★	% Difficulty Calving	8.26%	41%	★
	Docility	%	%	

Data Rel: 40 - 60% = Ave 20 - 40% = Below Ave <20% = Poor

uro-Star Traits

uro-Star Rating (ICBF, Jan 2009)

Calving Traits			Weanling Export, Beef Carcass & Replacement Calf Traits					
Calv Diff (%)	Gest Len (days)	Mort (%)	Wean Wt Dir (kg)	Wean Calf Quality (%)	Carc Wt (kg)	Carcass Conf Score	Carcass Fat Score	Dry Matter Intake (kg)
8.26	2.09	0.36	19.84	18.31	20.39	1.49	0	0.24

Replacement Milk & Fertility Traits					
Calv Int (days)	Survival (%)	Age 1st calv (days)	Wean Wt Mat (kg)	Calv Diff Mat (%)	Cull Cow (kg)
0.19	-0.72	-17.48	6.39	5.29	1.29

BLUP Linear Type

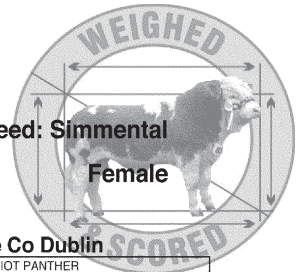
MUSCLE	SKELETAL	DOCILITY	RELIABILITY
113	98		47

Comments

Stylish red heifer. Dam Kathy is an excellent breeding cow. Outwintered. Herd negative vro IBR, BVD, Johnes. www.clonaghherds.com

Lot 41 CURAHEEN WISTERIA ET
IE171059820198 DOB: 31-Mar-2008

Breed: Simmental
Female



Owner: David Wall - Curaheen Hazelhatch Road Newcastle Co Dublin

MILTON LORD-TIFFANY ET	CARNKERN TITAN	TEVIOT PANTHER
		CARNKERN NATASHA
	SEABANK TIFFANY	HERRSCHER
		STAR POLLY
CURAHEEN RED DAWN	RACEVIEW KING	RACEVIEW GLADIATOR
		KILMICHAEL DIAMOND
	CURAHEEN NANCY	HILLCREST CHAMPION
		CURAHEEN GIRL

Within Breed Index Data rel Across Breed

★★★★★	Suckler Beef Value	€193	36%	★★★★★
-------	---------------------------	------	-----	-------

★	<i>Beef Value</i>			
★★★★★	Calving Traits	-€12	30%	★★
★★★★★	Weanling Export	€98	46%	★★★
★★★★★	Beef Carcass	€126	42%	★★★

★★★★★	<i>Replacement Value</i>			
★★★★★	Milk & Fertility	€134	17%	★★★★★
★★★★★	Calf Quality	€343	43%	★★★★★

★	<i>Other Key Traits</i>			
	% Difficulty Calving	7.15%	35%	★★
	Docility	%	%	

Data Rel: 40 - 60% = Ave 20 - 40% = Below Ave <20% = Poor

uro-Star Traits

uro-Star Rating (ICBF, Jan 2009)

Calving Traits			Weanling Export, Beef Carcass & Replacement Calf Traits					
Calv Diff (%)	Gest Len (days)	Mort (%)	Wean Wt Dir (kg)	Wean Calf Quality (%)	Carc Wt (kg)	Carcass Conf Score	Carcass Fat Score	Dry Matter Intake (kg)
7.15	1.92	0.82	31.09	19.41	27.93	1.33	-0.46	0.28

Replacement Milk & Fertility Traits					
Calv Int (days)	Survival (%)	Age 1st calv (days)	Wean Wt Mat (kg)	Calv Diff Mat (%)	Cull Cow (kg)
-5.58	1.85	5.02	10.6	6.05	19.18

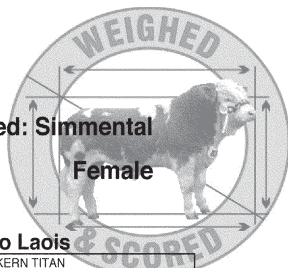
BLUP Linear Type

MUSCLE	SKELETAL	DOCILITY	RELIABILITY
114	109		46

Comments
Very nice red and white heifer. Well grown and correct

Lot 42 CLONAGH WILMA-BABE
IE221283370666 DOB: 05-Apr-2008

Breed: Simmental
Female



Owner: Garreth T Behan - Clonagowan Ballyfin Portlaoise Co Laois

DERROUGH SIMON	CLEENAGH FLASHER	CARNKERN TITAN
		CLEENAGH KAY
	DERROUGH DANIELLE	GRETNA HOUSE SUPERSONIC
		LAKEVIEW WANDA
CLONAGH NANDA	KILFRUSH GERALDO	BRINKTON BRILLIANT
		CORAH BRIGETTA
	CLONAGH EDWINA	SEABANK PEDRO
		SEABANK WHITNEY

Within Breed Index Data rel Across Breed

★	Suckler Beef Value	€136	29%	★★★
---	---------------------------	------	-----	-----

	<i>Beef Value</i>			
★★★	Calving Traits	-€4	21%	★★★★★
★	Weanling Export	€68	42%	★★
★	Beef Carcass	€80	36%	★★

	<i>Replacement Value</i>			
★★★★★	Milk & Fertility	€127	8%	★★★★★
★	Calf Quality	€219	38%	★★

	<i>Other Key Traits</i>			
★★★	% Difficulty Calving	5.67%	37%	★★★
	Docility	%	%	

Data Rel: 40 - 60% = Ave 20 - 40% = Below Ave <20% = Poor

uro-Star Traits

uro-Star Rating (ICBF, Jan 2009)

Calving Traits			Weanling Export, Beef Carcass & Replacement Calf Traits					
Calv Diff (%)	Gest Len (days)	Mort (%)	Wean Wt Dir (kg)	Wean Calf Quality (%)	Carc Wt (kg)	Carcass Conf Score	Carcass Fat Score	Dry Matter Intake (kg)
5.67	1.76	0.16	15.09	17.21	20.18	1.49	-0.17	0.32

Replacement Milk & Fertility Traits					
Calv Int (days)	Survival (%)	Age 1st calv (days)	Wean Wt Mat (kg)	Calv Diff Mat (%)	Cull Cow (kg)
-2.85	1.07	-6.88	9.85	6.35	8.41

BLUP Linear Type

MUSCLE	SKELETAL	DOCILITY	RELIABILITY
107	90		43

Comments

Regular Cycle, Outwintered. Herd negative vro IBR, BVD, Johnes. www.clonaghherds.com

CONDITIONS OF SALE AT AUCTION OF PEDIGREE CATTLE

1. The Highest bidder for each animal shall be the purchaser, and in the event of any dispute, the Auctioneer shall have absolute discretion either to settle the dispute or re-offer the animal immediately.
2. The Auctioneer may, without giving any reason thereof, refuse to accept any bid and may withdraw any animal for which the bidding is considered insufficient.
3. No person may advance less at a bid than a sum to be named from time to time by the auctioneer, and no bidding may be retracted.
4. The vendor may bid for any animal. or animals, and may withdraw any animal, or animals either personally or through the auctioneer, or through any person, as many times as they respectively may think fit.
5. The purchaser of each animal shall shall give their name and address to the auctioneer and pay for all animals purchased in cash immediately at the close of sale . No animal or animals shall be removed from the sale premises until paid for in full and a pass-out slip is obtained from the Auctioneer.
6. Each animal shall be at the purchaser's absolute risk from the fall of the hammer, and shall be removed from the sales premises at the purchaser's expense.
7. The right of property of each animal shall not pass to the purchaser until the full purchase price is paid and the contract of sale is signed by the purchaser.
8. Care has been taken to ensure the accuracy of the catalogue, but no sale shall be invalidated by reason of any defect or faults in any of the animals by reason of the animals being incorrectly described in the catalogue, or by the Auctioneer in the ring, and no compensation whatever shall be paid in respect of any such faults or errors of description.
9. All statements in the catalogue are made by the Auctioneer at the time of sale relating to any veterinary or other tests are to be taken as statements of fact only . No such statements shall guarantee the purchaser of any animal against loss arising from the subsequent reaction of such animal to any test administered after the sale, and the vendors shall not be in any way liable should this occur.
10. Neither the vendors nor the Auctioneers will be responsible for any accident or any injury to persons or property through fire or any other cause whatsoever, nor for any damages by animals prior to, during or after the sale.
11. All animals are sold subject to the Conditions of sale recommended for use at auctions for the sale of pedigree cattle by the Irish Simmental Cattle Society Ltd.
12. The vendor gives no warranty whatever as to the fertility or performance of any bull, and each purchaser is invited to insure against this or any other risks, at his own expense.

CONDITIONS OF SALE AT AUCTION OF PEDIGREE CATTLE

13. Purchasers not complying with the above condition shall be subject, without further notice, to have their animals re-sold either by Public Auction, or by private Treaty, at the discretion of the vendor and the defaulter would be liable for any loss and expense that accrues on the re-sale.
14. The Irish Simmental Cattle Society accepts no responsibility for any errors or inaccuracies that may have occurred in the compilation of this catalogue.

**PEDIGREE CATTLE BREEDERS COUNCIL OF IRELAND
CONDITIONS OF SALE TO APPLY ON ALL SALES OF
PEDIGREE CATTLE.**

1. These Conditions (and where appropriate at auctions, these Conditions together with the General Auction Conditions of Sale), form the basis of the contract between the vendor and the purchaser, and from the contract all conditions and warranties implied under the sale of Goods Act 1893 and the Sale of Goods and Supply of Services Act 1980 or any other statutory enactment or implied by any law or custom or usage are expressly excluded.
2. In the event of a Sale by Auction and there arising conflict between these conditions and the General conditions of the Auction, these conditions shall prevail.
3. All animals are sold as they stand and the purchaser is deemed to have examined each animal and fully satisfied himself about the animal prior to sale.
4. Save as hereinafter provided, no warranty whatever is given as to the performance or fertility of any bull and the purchaser is hereby invited to insure against this or any other risks connected with the bull, at his own expense.
5. The vendor shall and does hereby provide the following guarantee as to the fertility with each bull sold -(a) No guarantee whatever as to fertility is given with any bull under the age of nine months at the date of sale, unless otherwise stated in writing. (b) Subject to the Conditions hereinafter set out, the vendor guarantees that the bull is capable of putting a cow or heifer in a state of pregnancy by natural service within four months of the date of sale or within four months of attaining the age of fourteen months, whichever is the later. This guarantee shall be deemed to be fulfilled whenever one female animal is proved to be in calf by natural service to that bull, subsequent to the sale. A bull shall not be deemed to be incapable of putting a cow or heifer in a state of pregnancy by natural service on a semen test only.
6. The foregoing guarantee is subject to the following conditions:-
 - (a) The bull shall be fairly tried with a view to him putting a cow or heifer in a state of pregnancy by natural service within two months of the date of sale or within two months of attaining the age of fourteen months, whichever is the later. For the purposes of this paragraph, "fairly tried" shall not be deemed to have occurred when less than three female animals in season have been properly presented to or run with the bull.
 - (b) If, upon purchase of the bull, it is found impracticable for the buyer to fairly try the bull within the period stated at paragraph 6(a) above, due to the purchaser's normal calving programme, the vendor must be informed in writing immediately after the sale of the month in which it is proposed to commence using the bull. The vendor shall not unreasonably refuse to extend to the purchaser within seven days of receipt of the said notice in writing from the purchaser.
 - (c) The Purchaser shall give notice in writing by registered post to the vendor of an inability of the bull to put a cow or heifer in a state of pregnancy by natural service or a suspected inability in this respect, not before the expiration of one month nor after the expiration of three months from the date of sale or of the bull attaining fourteen months, or any extension of the commencement of the trial period granted pursuant to paragraph) 6 (b) above or whichever is the later.

**PEDIGREE CATTLE BREEDERS COUNCIL OF IRELAND
CONDITIONS OF SALE TO APPLY ON ALL SALES OF
PEDIGREE CATTLE.**

7. Breeding Guarantee - Females Any cow or heifer realising 500 gns, or more that is stated by vendor as having been served or artificially inseminated not less than 12 weeks before the date of the sale shall be guaranteed in calf to the service date or date of artificial insemination and to the bull stated, unless any alteration to the service particulars is announced from the rostrum or by the vendor at the time the animal is sold. The term " running with the Bull" implies no guarantee of pregnancy unless specifically stated by the vendor at the time of sale, neither shall the provision by the vendor of a certificate of positive pregnancy diagnosis imply any such guarantee this being merely an expression of opinion. Every heifer sold as un-served shall be so guaranteed and all such heifers (unless sold suckling their dams) shall carry a guarantee that they are capable of breeding. Calves sold suckling their dams are given to the purchaser free and no guarantees apply unless specifically stated by the vendor at the time of sale. No claim under these Rules will be effective unless made to the Auctioneers or to the vendor within the following time limits, as applicable, viz:
- (a) In the case of a cow or heifer sold as being in calf which proved NOT to be in calf - within 49 days of the date of sale.
 - (b) In the case of a cow or heifer which, although in calf, does not calve to the stated service or insemination date - within TWO CALENDAR MONTHS of the date that the animal should have calved according to the particulars of service or insemination stated in the catalogue of sale, in all such cases, no claim will be admissible unless there is an interval of more than four weeks between the presumed due date (according to the stated particulars of service or insemination) and the actual calving date. NOTE the average gestation period for cattle is 285 days.
 - (c) In the case of a cow or heifer calves at a later date than the due date the onus of proving the identity of the service bull shall be upon the vendor.
 - (d) In the case of a heifer sold as un-served and which subsequently proved to be in calf - within SIX CALENDAR MONTHS of the date of sale.
 - (e) In the case of a maiden heifer which proves incapable of breeding because of malformation or abnormality of the genital system - not before the animal attains the age of TWENTY SEVEN MONTHS and no claim under this rule be admissible after the animal has attained the age of THIRTY SIX MONTHS. NOTE: Any female (cow or heifer) that has been flushed for embryo transplant will be EXCLUDED from the terms of this guarantee but individual vendors of such animals shall have the option of giving their personal guarantee to be announced at the time of sale. No claims will be admitted under these rules where it can be proved that a cow or heifer is carrying a mummified calf, or has aborted or re-absorbed a foetus and no guarantee is given or implied that any cow or heifer will carry a calf full time. All claims must be submitted to the vendor and the Secretary of the Society and shall be resolved in accordance with the provisions of clause (f) of this agreement.

**PEDIGREE CATTLE BREEDERS COUNCIL OF IRELAND
CONDITIONS OF SALE TO APPLY ON ALL SALES OF
PEDIGREE CATTLE.**

8. This agreement shall be interpreted in accordance with the law of the Republic of Ireland.
9. Commission - 5% payable by the Purchases.